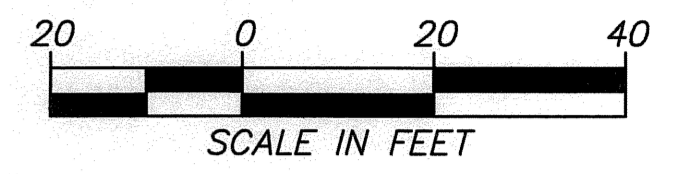


T. 20 N, R. 4 E., W.M.

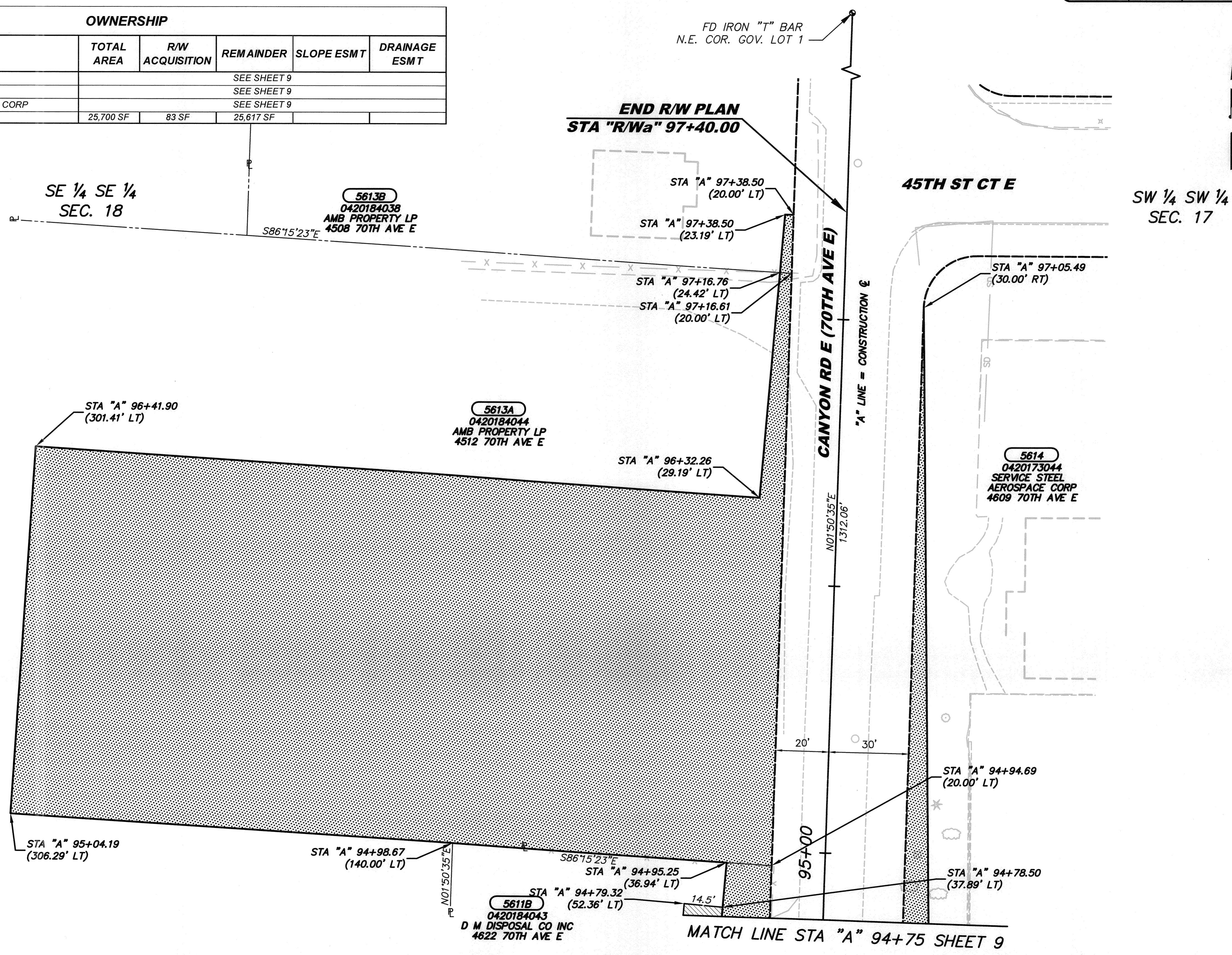
REGION NO.	STATE	FEDERAL AID PROJECT NO.	SHEET NO.	TOTAL SHEETS
10	WASH.	STPUL 3170(003)	10	20

OWNERSHIP					
PARCEL NO.	NAME	TOTAL AREA	R/W ACQUISITION	REMAINDER	DRAINAGE ESMT
5611B	D M DISPOSAL CO INC			SEE SHEET 9	
5613A	AMB PROPERTY LP			SEE SHEET 9	
5614	SERVICE STEEL AEROSPACE CORP			SEE SHEET 9	
5613B	AMB PROPERTY LP	25,700 SF	83 SF	25,617 SF	

CALL 2 WORKING DAYS BEFORE YOU DIG
1-800-424-5555
 UTILITIES UNDERGROUND LOCATION CENTER



NOTE:
 PROPERTY LINES OF THE ADJACENT PARCELS SHOWN ON THESE PLANS ARE LOCATED BY INTERPRETATION OF DEEDS AND OTHER INFORMATION FOUND IN THE PUBLIC RECORD AND SHOULD NOT BE CONSTRUED AS AN ACTUAL SURVEY.



DRAWN BY: C. LAKOSE	BOOK NO.: 1424
DESIGNED BY: L. SANFORD	SURVEYED BY: D. AUCLAND
CHECKED BY: R. SCHLONGA, P.E.	DATE SURVEYED: 6-30-2000
REVIEWED BY: P. BAUGHMAN, P.E.	DATE PLOTTED: Oct. 2012

NO.	DATE	REVISION	BY	APPROVED

Pierce County
 Public Works and Utilities
 Office of the County Engineer
 Tacoma Mall Office Building
 4301 South Pine Street, Suite 446
 Tacoma, Washington 98409-7207
 An APWA Accredited Agency

APPROVED BY:

 BRIAN D. STACY, P.E. DATE: 10-17-12
 County Engineer

 RAMIRO A. CHAVEZ, P.E., PGMP
 PROJECT ENGINEERING MANAGER

CANYON RD E NORTHERLY EXTENSION
62ND AVE E TO 45TH ST CT E
RIGHT OF WAY PLAN SHEET
CRP 5498

Drawing: P:\5498-5257E70A\F\ENGRS\DRAWINGS\RIGHTWAY\VELLUMSPLOTTED\5498PROPPROPWPLANS01.DWG Layout: Tab: ROW 10
 Xrefs: 5498DESIGNINDEX.DWG / 5498-5643-TOPINDEX.DWG / 5498 ROW INDEX.DWG / 5498ORTHINDEX.DWG
 Date: 10/15/2012 Time: 11:56:25 AM Plotted by: CLAKOSE