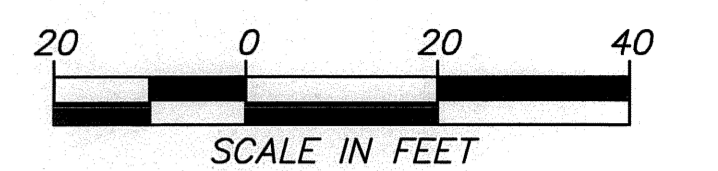


REGION NO.	STATE	FEDERAL AID PROJECT NO.	SHEET NO.	TOTAL SHEETS
10	WASH.	STPUL 3170(003)	14	20

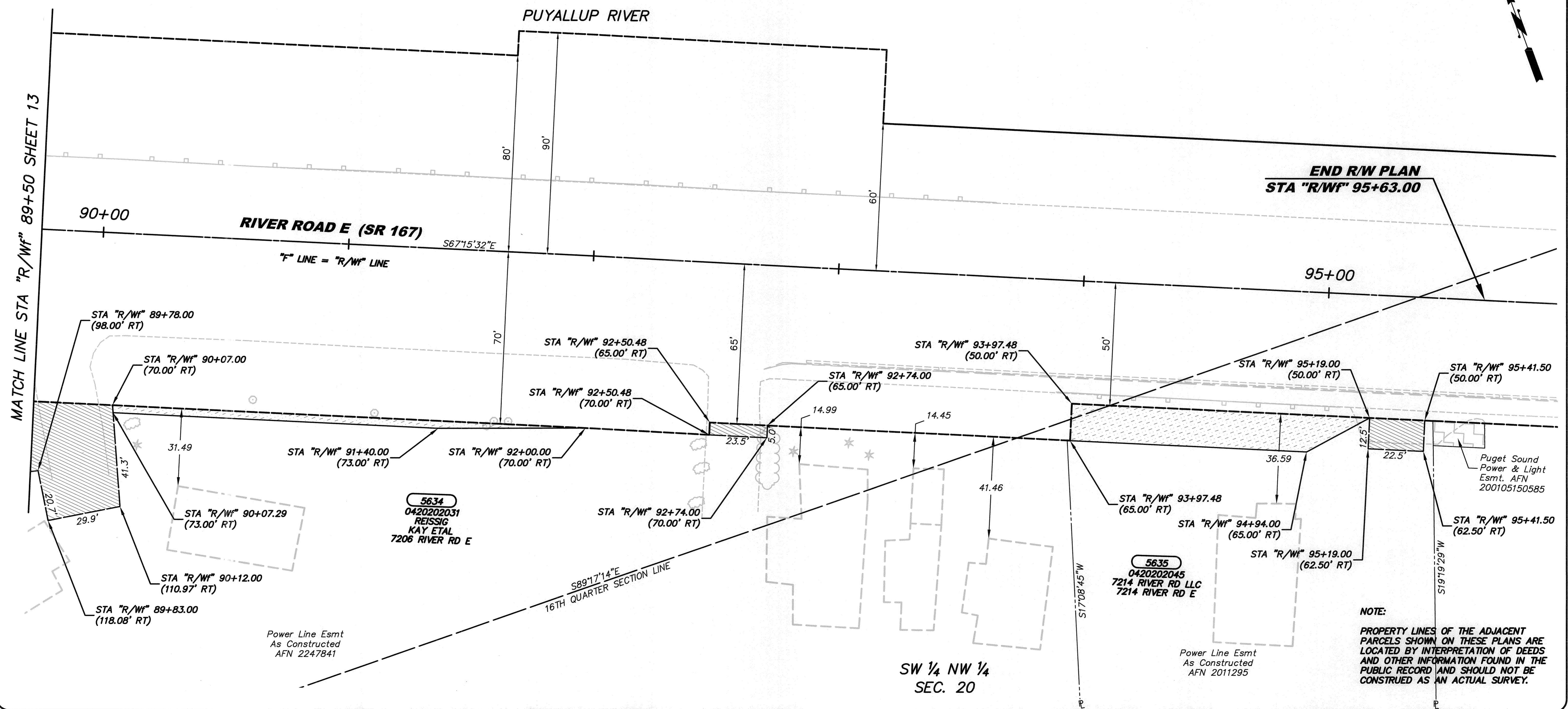
T. 20 N, R. 4 E., W.M.

NW 1/4 NW 1/4
SEC. 20

CALL 2 WORKING DAYS BEFORE YOU DIG
1-800-424-5555
UTILITIES UNDERGROUND LOCATION CENTER



OWNERSHIP					
PARCEL NO.	NAME	TOTAL AREA	R/W ACQUISITION	REMAINDER	DRAINAGE ESMT
5634	RESSIG ETAL			SEE SHEET 13	
5635	7214 RIVER ROAD LLC	22,350 SF		22,350 SF	1,635 SF



NOTE:
PROPERTY LINES OF THE ADJACENT PARCELS SHOWN ON THESE PLANS ARE LOCATED BY INTERPRETATION OF DEEDS AND OTHER INFORMATION FOUND IN THE PUBLIC RECORD AND SHOULD NOT BE CONSTRUED AS AN ACTUAL SURVEY.

Drawing: P:\5498-525TE70AVE\ENGRS\DRAWINGS\RIGHTOFWAY\PLANSHEETS\5498PROPRWPLAN02.DWG Layout: Tab: ROW_14
Xrefs: 5498-5643-TOPINDEX.DWG / 5498-5643-TOPINDEX.DWG / 5498 ROW INDEX.DWG / 5498 ROW INDEX.DWG / 5498-525TE70AVESURVEINDX.DWG
Date: 10/10/2012 Time: 02:24:38 PM Plotted by: CLAKOSE

DRAWN BY: C. LAKOSE	BOOK NO.: 1424
DESIGNED BY: L. SANFORD	SURVEYED BY: D. AUCLAND
CHECKED BY: R. SCHLONGA, P.E.	DATE SURVEYED: 6-30-2000
REVIEWED BY: P. BAUGHMAN, P.E.	DATE PLOTTED: Oct. 2012

NO.	DATE	REVISION	BY	APPROVED

Pierce County
Public Works and Utilities
Office of the County Engineer
Tacoma Mall Office Building
4301 South Pine Street, Suite 446
Tacoma, Washington 98409-7207
An APWA Accredited Agency

10/17/12
County Engineer
APPROVED BY:
Brian D. Stacy 10-17-12
BRIAN D. STACY, P.E. DATE
RAMIRO A. CHAVEZ, P.E., PGMP
PROJECT ENGINEERING MANAGER

CANYON RD E NORTHERLY EXTENSION
62ND AVE E TO 45TH ST CT E
RIGHT OF WAY PLAN SHEET
CRP 5498