
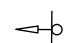
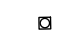
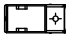
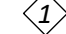
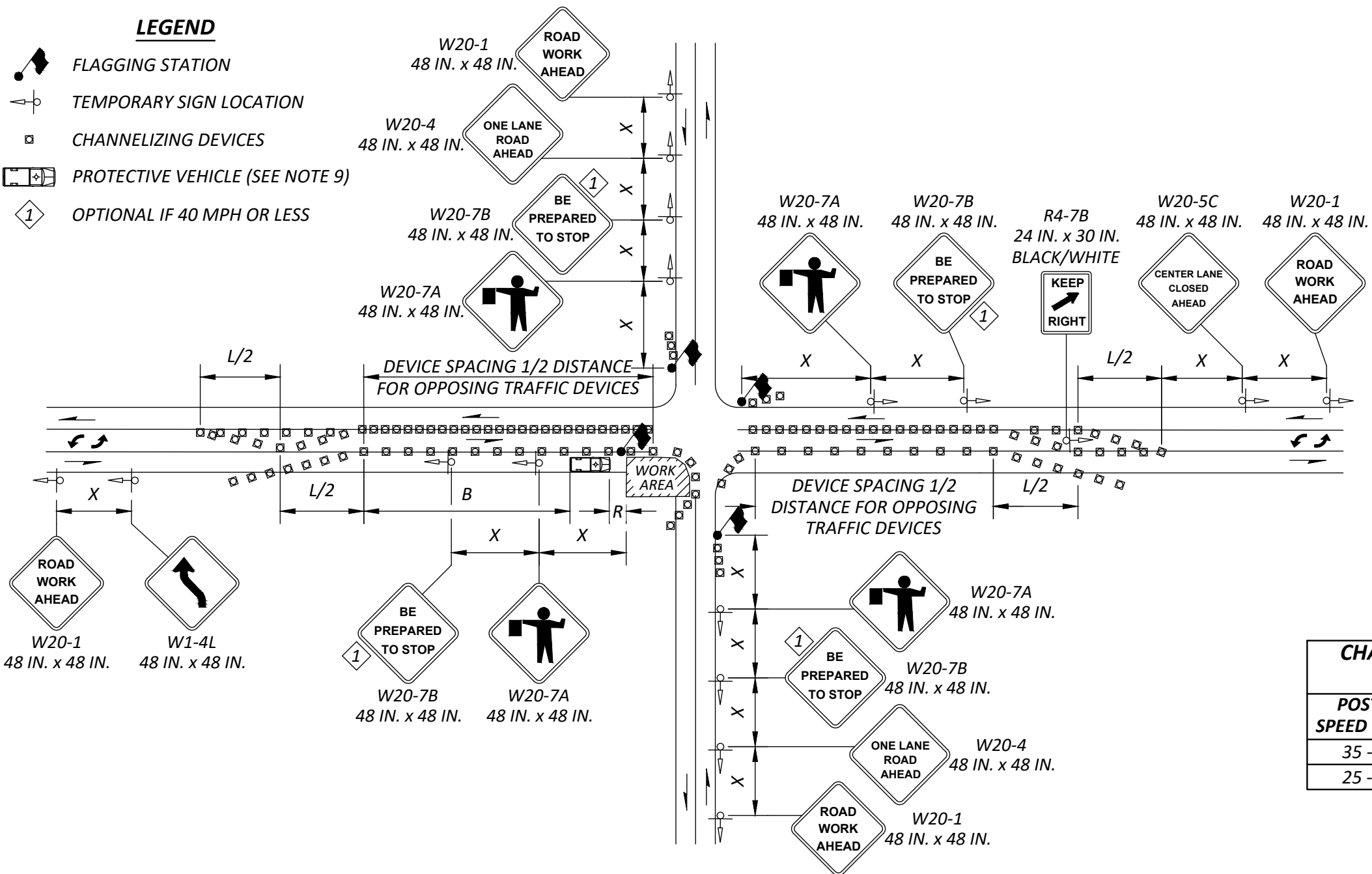


Summary of Standard Drawing Changes January 2021

| Std Dwg No. | Summary of Changes |
|-------------|--------------------|
| PC.K4.3 | Minor Changes |

LEGEND

-  FLAGGING STATION
-  TEMPORARY SIGN LOCATION
-  CHANNELIZING DEVICES
-  PROTECTIVE VEHICLE (SEE NOTE 9)
-  OPTIONAL IF 40 MPH OR LESS



SIGN SPACING = X (1)

| TYPE OF ROADWAY | POSTED SPEED | SIGN SPACING (FT) |
|---|--------------|-------------------|
| RURAL ROADS AND URBAN ARTERIALS | 45 MPH | 500 ± |
| RURAL ROADS AND URBAN ARTERIALS | 35 / 40 MPH | 350 ± |
| RURAL ROADS, URBAN ARTERIALS, RESIDENTIAL, AND BUSINESS DISTRICTS | 25 / 30 MPH | 200 ± (2) |

(1) ALL SPACING MAY BE ADJUSTED TO ACCOMMODATE INTERSECTIONS AND DRIVEWAYS
 (2) THIS SPACING MAY BE REDUCED IN URBAN AREAS TO FIT ROADWAY CONDITIONS

BUFFER DATA (B, R)

LONGITUDINAL BUFFER SPACE = B

| MPH | 25 | 30 | 35 | 40 | 45 |
|-------------|-----|-----|-----|-----|-----|
| LENGTH (FT) | 155 | 200 | 250 | 305 | 360 |

BUFFER VEHICLE ROLL AHEAD DISTANCE = R

| | |
|---|--------------------------------|
| TRANSPORTABLE ATTENUATOR MINIMUM HOST VEHICLE WEIGHT 15,000 LBS. THE MAXIMUM WEIGHT SHALL BE IN ACCORDANCE WITH THE MANUFACTURER'S RECOMMENDATION. | 30 FEET MIN. TO 100 FEET MAX. |
| PROTECTIVE VEHICLE MAY BE A WORK VEHICLE STRATEGICALLY LOCATED TO SHIELD THE WORK AREA. | NO SPECIFIED DISTANCE REQUIRED |

CHANNELIZATION DEVICE SPACING (FT)

| POSTED SPEED (MPH) | TAPER | TANGENT |
|--------------------|-------|---------|
| 35 - 45 | 30 | 60 |
| 25 - 30 | 20 | 40 |

MINIMUM LANE CLOSURE TAPER LENGTH = L (FT)

| LANE WIDTH (FT) | POSTED SPEED (MPH) | | | | |
|-----------------|--------------------|-----|-----|-----|-----|
| | 25 | 30 | 35 | 40 | 4 |
| 10 | 105 | 150 | 205 | 270 | 450 |
| 11 | 115 | 165 | 225 | 295 | 495 |
| 12 | 125 | 180 | 245 | 320 | 540 |

NOTES:

- 1) EXTEND DEVICE TAPER AT L/3 ACROSS SHOULDER, 3 DEVICES MINIMUM.
- 2) IF A SIGNAL IS PRESENT, IT SHALL BE SET TO "RED FLASH MODE" DURING FLAGGING OPERATIONS.
- 3) LAW ENFORCEMENT OFFICER(S) MAY BE USED INSTEAD OF FLAGGERS TO CONTROL INTERSECTION TRAFFIC.
- 4) FOR SPEED LIMIT OF 30 MPH OR LESS USE W1-3 SIGN INSTEAD OF W1-4 SIGN.
- 5) MAINTAIN A MINIMUM OF ONE ACCESS POINT FOR EACH BUSINESS WITHIN WORK AREA LIMITS.
- 6) ALL SIGNS ARE BLACK ON ORANGE UNLESS OTHERWISE DESIGNATED.
- 7) MAINTAIN MINIMUM 11-FOOT LANES AT ALL TIMES.
- 8) SEE SPECIAL PROVISIONS FOR WORK HOUR RESTRICTIONS.
- 9) PROTECTIVE VEHICLE REQUIRED WHERE POSTED SPEED LIMIT IS 45 MPH. OTHERWISE, USED AT CONTRACTORS DISCRETION AND EXPENSE.
- 10) LANE CLOSURES REQUIRE 72-HOUR PUBLIC NOTICE VIA PCMS, UNLESS OTHERWISE APPROVED BY THE ENGINEER. COORDINATE PCMS MESSAGE WITH PIERCE COUNTY TRAFFIC ENGINEERING.

(NOT TO SCALE)