

# **AMERICANS WITH DISABILITIES ACT (ADA) TRANSITION PLAN UPDATE FOR PIERCE COUNTY PUBLIC RIGHTS-OF-WAY**

Clint Ritter, P.E.

Courtney Pompa, P.E.

Office of the County Engineer

Pierce County Planning & Public Works



# Agenda

- ADA Transition Plan 2020
- ADA Projects
- Data Updates and Future Metrics
- Other Program Progress
- Future Support Needed
- Questions

# ADA Transition Plan 2020

- Council Approved the ADA Transition Plan in February 2020!
- Plan addresses county-owned facilities in the public right-of-way in unincorporated Pierce County.
- Facilities include:
  - sidewalks
  - curb ramps
  - driveways
  - accessible pedestrian signals/pedestrian push buttons

1 Sponsored by: Councilmembers Marty Campbell and Connie Ladenburg  
 2 Requested by: County Executive/Planning & Public Works Department  
 3  
 4  
 5  
 6 **RESOLUTION NO. R2019-161**  
 7  
 8 **A Resolution of the Pierce County Council Approving the Americans with**  
 9 **Disabilities Act (ADA) Transition Plan for Public Rights-of-**  
 10 **Way.**  
 11  
 12 **Whereas**, the Americans with Disabilities Act of 1990 is a civil rights law that  
 13 prohibits discrimination against individuals on the basis of disability; and  
 14  
 15  
 16 **Whereas**, Title II of the ADA (28 CFR Part 37) requires state and local  
 17 government to conduct a self-evaluation of services, programs, and activities  
 18 to individuals with disabilities and develop a Transition Plan to address  
 19 efforts that must be made to correct findings of non-compliance;  
 20 and  
 21  
 22 **Whereas**, the draft ADA Transition Plan for  
 23 Pierce County Planning and Public Works in 2019  
 24 2015 publication of the ADA Public Rights-of-Way  
 25  
 26 **Whereas**, Title II of the ADA (28 CFR Part 37) provides  
 27 an opportunity to interested persons, including individual  
 28 organizations representing individuals with disabilities,  
 29 of the Transition Plan by submitting comments; and  
 30  
 31 **Whereas**, the County held an official 30-day  
 32 ADA Transition Plan and incorporated feedback from  
 33 into the Pierce County 2019 ADA Transition Plan for  
 34 Exhibit A; and  
 35  
 36 **Whereas**, the County Council has completed  
 37  
 38 **BE IT RESOLVED by the Council of Pierce County**  
 39  
 40 **Section 1.** The Council hereby approves the  
 41 Disability Act Transition Plan for Public Rights-of-Way  
 42 Exhibit A and incorporated herein by reference.  
 43  
 44



**Americans with Disabilities Act  
 Transition Plan for Public Rights-of-Way**

Prepared by Pierce County Planning & Public Works  
 2019

# ADA Projects

- Three projects completed!
- Working to balance resources with meaningful projects
- Annual funding accomplishes:
  - Design
  - Construction
  - Program administration
  - Funding match for grants

Program Year for Construction	Project Name	Quantity Improved or Estimated Quantity to Improve				Estimated/Total Project Cost
		APS (ea.)	Curb Ramps (ea.)	Driveways (ea.)	Sidewalks (Approx. LF)	
2018	CRP 5860- C ST S	8	48	1	100	\$ 583,013.06
2019	CRP 5881-ADA Improvement Project	0	18	0	25	\$ 237,665.70
2020	CRP 5904- Gem Heights Drive E	8	35	0	250	\$ 735,463.92
2021	CRP 5922- ADA Improvement Program 2021	0	24	0	240	\$ 669,290.00
2022	CRP 5923- ADA Improvement Program 2022	8	20	0	TBD	\$ 557,500.00
2023	CRP 5934- ADA Improvement Program 2023	6	44	4	TBD	\$ 1,320,000.00

 Planned Project- Subject to Council Approval

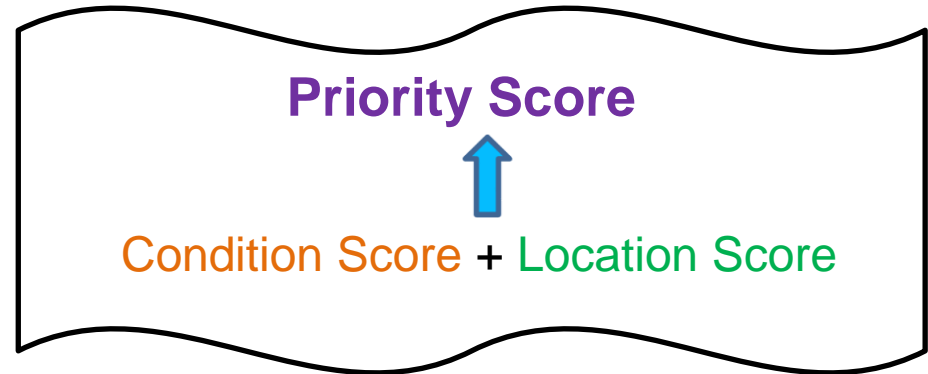
# Other ADA Project Improvements

- Types of Projects can include:
  - Intersections/Signals
  - Asphalt Overlays
  - Major Widening/Capacity
  - Sidewalk grants



# Data Updates and Future Metrics

- Rerun Data Analysis Annually
  - Show project progress
  - Confirm areas of need/investments

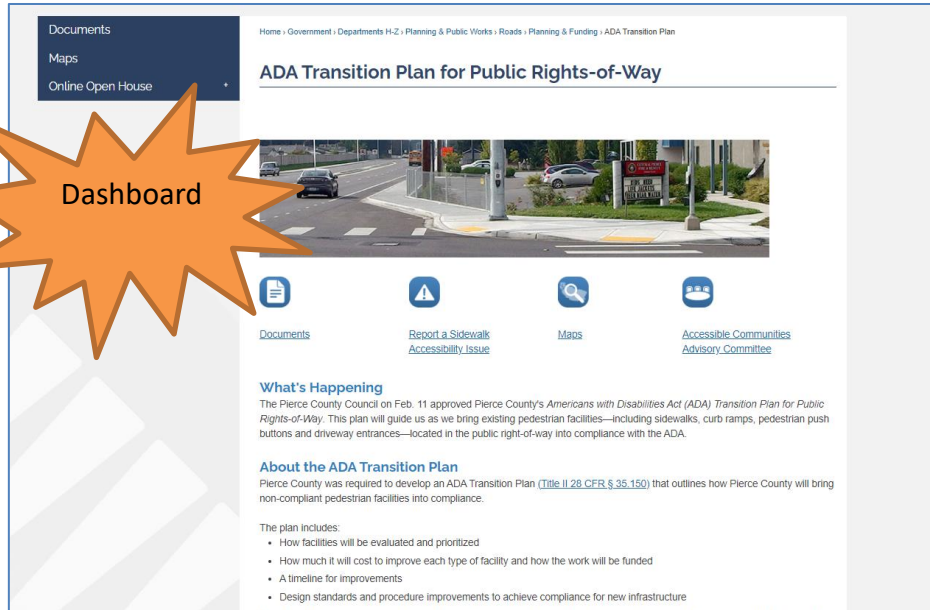


- Future Metric Options
  - Other measurements for features incorporate into condition scoring
  - Environmental Justice
    - Low Income
    - Minority
    - Education- Less than high school
    - Linguistic Isolation
    - Age (under 5 or over 64)

## Example Condition Scoring

Sidewalk Segment Condition Scoring Category	Points
<b>Sidewalk Segment Width:</b>	
width < 4.0'	20
width 4.0' - 4.9'	10
width >= 5.0'	0
<b>Sidewalk Segment Worst Cross Slope:</b>	
cross slope > 8.3%	15
cross slope 8.3% - 5%	10
cross slope 3.6% - 5%	4
cross slope 2.1% - 3.5%	2
cross slope <= 2.0%	0
<b>Sidewalk Segment Average Cross Slope:</b>	
cross slope > 5%	15
cross slope 3.6% - 5%	8
cross slope 2.1% - 3.5%	4
cross slope <= 2.0%	0

# Other Program Progress



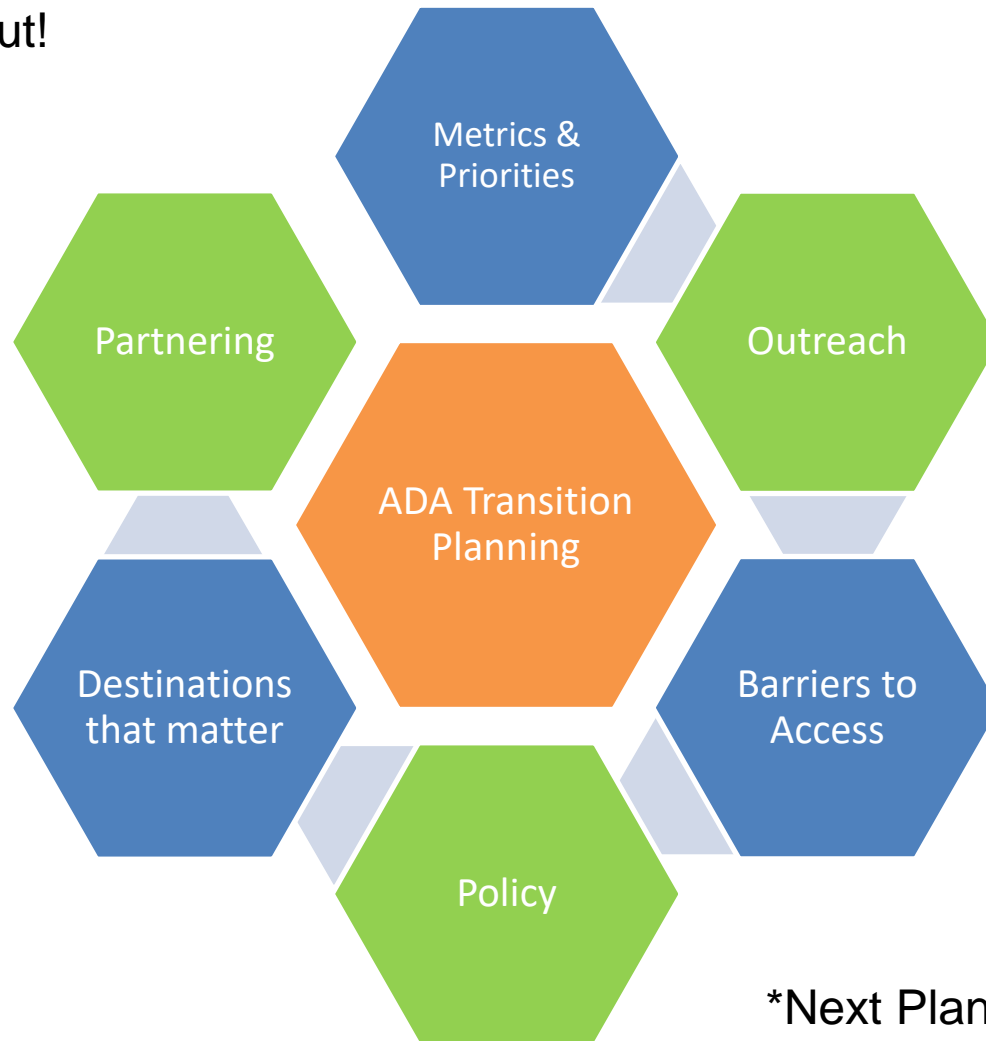
<https://www.piercecountywa.gov/3987/ADA-Transition-Plan>

- Website updates
  - Readability
  - Accessibility
  - Dashboard Coming soon!
  - Please test and let us know what you think
- Inspection Manual/Collection
  - Clarify on items for data collection
  - Additional Ramp Types
  - Reduce lag time for collection of new improvements after projects
- Design Standards/Processes
  - Standard Plans
  - Permit Review
  - Improved coordination between PC teams
  - Network with other agencies



# Future Support Needed

We value your input!



\*Next Plan Update in 2025





# QUESTIONS?

Clint Ritter, P.E.

(253)798-2762 or [clint.ritter@piercecounitywa.gov](mailto:clint.ritter@piercecounitywa.gov)

Courtney Pompa, P.E.

(253)798-2288 or [courtney.pompa@piercecounitywa.gov](mailto:courtney.pompa@piercecounitywa.gov)