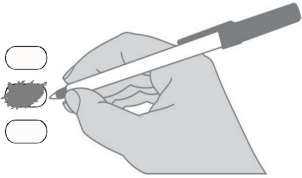


**Pierce County, Washington
Primary Election Provisional / Sample Ballot
August 2, 2022**

Instructions

How to vote



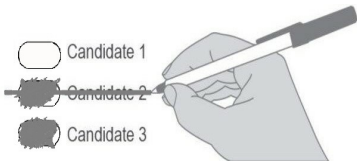
Use an ink pen to fill in the oval to the left of your choice.

Do not use felt tip markers.

Vote for one in each contest.

If you vote for more than one choice, your vote will not count for that race or measure.

How to fix a mistake



To make a correction, draw a line through the entire incorrect choice. You may make another choice.

Optional write-in

To vote for a write-in candidate, fill in the oval next to the write-in line and print the name.

Assistance & information

Visit: PierceCountyElections.org

To request a replacement ballot call
253-798-VOTE (8683).

Who donates to campaigns?

For a list of the people and organizations that donated to state and local candidates and ballot measure campaigns, visit www.pdc.wa.gov

Partisan Office Information

READ: Each candidate for partisan office may state a political party that he or she prefers. A candidate's preference does not imply that the candidate is nominated or endorsed by the party, or that the party approves of or associates with that candidate.

Federal - Partisan Office

U.S. Senator

- Henry Clay Dennison
(Prefers Socialist Workers Party)
- Mohammad Hassan Said
(Prefers Democratic Party)
- John Guenther
(Prefers Republican Party)
- Tiffany Smiley
(Prefers Republican Party)
- Dan Phan Doan
(States No Party Preference)
- Dr Pano Churchill
(Prefers Democratic Party)
- Dave Saulibio
(Prefers JFK Republican Party)
- Sam Cusmir
(Prefers Democratic Party)
- Bill Hirt
(Prefers Republican Party)
- Jon Butler
(Prefers Independent Party)
- Bryan Solstin
(Prefers Democratic Party)
- Martin D. Hash
(States No Party Preference)
- Patty Murray
(Prefers Democratic Party)
- Thor Amundson
(Prefers Independent Party)
- Charlie (Chuck) Jackson
(Prefers Independent Party)
- Naz Paul
(Prefers Independent Party)
- Ravin Pierre
(Prefers Democratic Party)
- Leon Lawson
(Prefers Trump Republican Party)
- Write-In

6th Congressional District

U.S. Representative

- Rebecca Parson
(Prefers Democratic Party)
- Tom Triggs
(Prefers Independent Party)
- Derek Kilmer
(Prefers Democratic Party)
- Chris Binns
(Prefers Republican Party)
- Todd A Bloom
(Prefers Republican Party)
- Elizabeth Kreiselmaier
(Prefers Republican Party)
- Write-In

Federal - Partisan Office

8th Congressional District

U.S. Representative

- Emet Ward
(Prefers Democratic Party)
- Kim Schrier
(Prefers Democratic Party)
- Reagan Dunn
(Prefers Republican Party)
- Matt Larkin
(Prefers Republican Party)
- Dave Chapman
(Prefers Republican Party)
- Ryan Dean Burkett
(States No Party Preference)
- Justin Greywolf
(Prefers Libertarian Party)
- Keith Arnold
(Prefers Democratic Party)
- Patrick Dillon
(Prefers Concordia Party)
- Jesse Jensen
(Prefers Republican Party)
- Scott Stephenson
(Prefers Republican Party)
- Write-In

10th Congressional District

U.S. Representative

- Marilyn Strickland
(Prefers Democratic Party)
- Richard Boyce
(Prefers Congress Sucks Party)
- Keith R Swank
(Prefers Republican Party)
- Eric Mahaffy
(Prefers Democratic Party)
- Dan Earnest Gordon
(Prefers Republican Party)
- Write-In

State - Partisan Office

Secretary of State

Two Year Unexpired Term

- Bob Hagglund
(Prefers Republican Party)
- Kurtis Engle
(Prefers Union Party)
- Marquez Tiggs
(Prefers Democratic Party)
- Tamborine Borrelli
(Prefers America First (R) Party)
- Steve Hobbs
(Prefers Democratic Party)
- Keith L. Wagoner
(Prefers Republican Party)
- Mark Miloscia
(Prefers Republican Party)
- Julie Anderson
(Prefers Nonpartisan Party)
- Write-In

State - Partisan Offices

2nd Legislative District

State Representative Pos. 1

- Andrew Barkis
(Prefers Republican Party)
- Write-In

State Representative Pos. 2

- Edward Meer
(States No Party Preference)
- JT Wilcox
(Prefers Republican Party)
- Write-In

25th Legislative District

State Representative Pos. 1

- Kelly Chambers
(Prefers Republican Party)
- Jamie Smith
(Prefers Democratic Party)
- Write-In

State Representative Pos. 2

- Cyndy Jacobsen
(Prefers Republican Party)
- Write-In

26th Legislative District

State Senator

- David Crissman
(Prefers Republican Party)
- Jesse L. Young
(Prefers Republican Party)
- Emily Randall
(Prefers Democratic Party)
- Write-In

State Representative Pos. 1

- Adison Richards
(Prefers Democratic Party)
- Spencer Hutchins
(Prefers Republican Party)
- Write-In

State Representative Pos. 2

- Michelle Caldwell
(Prefers Republican Party)
- Matt Macklin
(Prefers Democratic Party)
- Write-In

27th Legislative District

State Senator

Two Year Unexpired Term

- Ashley M. Ray
(Prefers Republican Party)
- Yasmin Trudeau
(Prefers Democratic Party)
- Mike Stewart
(Prefers Republican Party)
- Write-In

State Representative Pos. 1

- Todd Briske
(Prefers Forward Party)
- Laurie Jinkins
(Prefers Democratic Party)
- Jalonnie Givens Jackson
(Prefers Republican Party)
- Write-In

State Representative Pos. 2

- Janet Large
(Prefers Republican Party)
- Jake Fey
(Prefers Democratic Party)
- Dhaval Patel
(States No Party Preference)
- Write-In

28th Legislative District

State Representative Pos. 1

- Mari Leavitt
(Prefers Democratic Party)
- Victor Hogan
(Prefers Republican Party)
- Dre Le Blanc
(Prefers Republican Party)
- Gabe Sachwitz
(Prefers Republican Party)
- Write-In

State Representative Pos. 2

- Chris Nye
(Prefers Republican Party)
- Dan Bronoske
(Prefers Democratic Party)
- Susanna Keilman
(Prefers Republican Party)
- Write-In

29th Legislative District

State Senator

- Terry Harder
(Prefers Republican Party)
- Steve Conway
(Prefers Democratic Party)
- Write-In

29th Legislative District

State Representative Pos. 1

- Brett Johnson
(Prefers Republican Party)
- Melanie Morgan
(Prefers Democratic Party)
- Tim Monaghan
(Prefers Democratic Party)
- Write-In

State Representative Pos. 2

- David H. Figuracion
(Prefers Republican Party)
- Sharlett Mena
(Prefers Democratic Party)
- Melissa Knott
(Prefers Democratic Party)
- Write-In

31st Legislative District

State Senator

- Phil Fortunato
(Prefers Republican Party)
- Clifford Knopik
(States No Party Preference)
- Chris Vance
(States No Party Preference)
- Write-In

State Representative Pos. 1

- Brandon Beynon
(Prefers Republican Party)
- Holly Stanton
(Prefers Democrat Party)
- Drew Stokesbary
(Prefers Republican Party)
- Write-In

State Representative Pos. 2

- Eric E. Robertson
(Prefers Republican Party)
- Write-In

Pierce County

Nonpartisan Office

Auditor

- Deryl McCarty
- Damon Townsend
- Linda Farmer
- Write-In

Pierce County

Partisan Office

County Council District No. 1

- Timothy Tooker
(Prefers America First (R) Party)
- Dave Morell
(Prefers Republican Party)
- Write-In

County Council District No. 5

- Nancy Dailey Slotnick
(Prefers Republican Party)
- Marty Campbell
(Prefers Democratic Party)
- Write-In

County Council District No. 7

- Josh Harris
(Prefers Republican Party)
- Mitch Anderson
(Prefers Republican Party)
- Robyn Denson
(Prefers Democratic Party)
- Paula Lonergan
(Prefers Republican Party)
- Chuck West
(Prefers Republican Party)
- Write-In

Town of Eatonville

Special Election - Proposition No. 1

Replacement Emergency Medical Services Levy

The Eatonville Town Council passed Resolution 2022-U concerning the replacement of an expiring levy for emergency medical services. It would authorize the Town of Eatonville to continue to impose an additional regular property tax levy of fifty cents or less per thousand dollars of assessed valuation for each of six consecutive years solely for the provision of emergency medical services. Should this proposition be approved?

- Yes
- No

Central Pierce Fire & Rescue

Special Election - Proposition No. 1

Re-authorizing EMS Levy

Will Central Pierce Fire & Rescue be re-authorized to impose regular property tax levies of fifty cents (\$0.50) or less per thousand dollars (\$1,000.00) of assessed valuation for each of six consecutive years to continue providing basic and advanced (paramedic) emergency medical services?

Yes

No

Special Election - Proposition No. 2

Re-authorizing Fire Benefit Charge

Shall Central Pierce Fire & Rescue be re-authorized to continue voter-authorized benefit charges each year for six consecutive years, not to exceed an amount equal to sixty percent of its operating budget, and be prohibited from imposing an additional property tax under RCW 52.16.160?

Yes

No

South Pierce Fire & Rescue

Special Election - Proposition No. 1

Re-authorizing EMS Levy

Will South Pierce Fire & Rescue be re-authorized to impose regular property tax levies of fifty cents (\$0.50) or less per thousand dollars (\$1,000.00) of assessed valuation for each of six consecutive years to continue providing basic and advanced (paramedic) emergency medical services?

Yes

No

Fire Protection District No. 5 (Gig Harbor Fire & Medic One)

Special Election - Proposition No. 1

Bonds for Fire Stations and Training Facility

The Board of Fire Commissioners of Pierce County Fire Protection District No. 5 (Gig Harbor Fire & Medic One) adopted Resolution No. 2022-03, concerning emergency services facilities to protect public health, life and property. If approved, Proposition No. 1 will authorize the District to: construct a live fire training facility; replace Station 51 (Gig Harbor); renovate Stations 53 (Fox Island), 57 (Crescent Valley), 58 (Swede Hill) and 59 (Artondale); make other capital improvements and acquisitions; issue no more than \$80,000,000 of general obligation bonds maturing within 20 years; and levy annual excess property taxes to repay the bonds, all as provided in Resolution No. 2022-03. Should Proposition No. 1 be:

Approved

Rejected

Precinct Committee Officer

For this office only: In order to vote for precinct committee officer, a partisan office, you must affirm that you are a Democrat or a Republican and may vote only for one candidate from the party you select. Your vote for a candidate affirms your affiliation with the same party as the candidate. This preference is private and will not be matched to your name or shared.

Precinct 02-148

Charlotte A. Thomas - Rep
I affirm I am a Republican.

Pat Campion - Rep
I affirm I am a Republican.

David D. Thomas - Rep
I affirm I am a Republican.

Precinct 02-151

Charlene Hamblen - Dem
I affirm I am a Democrat.

Jake Pool - Dem
I affirm I am a Democrat.

Precinct Committee Officer

For this office only: In order to vote for precinct committee officer, a partisan office, you must affirm that you are a Democrat or a Republican and may vote only for one candidate from the party you select. Your vote for a candidate affirms your affiliation with the same party as the candidate. This preference is private and will not be matched to your name or shared.

Precinct 02-157

Shelly M. Smith - Rep
I affirm I am a Republican.

Codi V. Winans - Rep
I affirm I am a Republican.

Precinct 25-249

Sandy Rozumny - Rep
I affirm I am a Republican.

Giovanni Vendetti - Rep
I affirm I am a Republican.

Precinct 25-285

Joyce Alvarez - Rep
I affirm I am a Republican.

Tim Tooker - Rep
I affirm I am a Republican.

Precinct 26-310

Peggy Hutt - Rep
I affirm I am a Republican.

Aaron Bonner - Rep
I affirm I am a Republican.

Precinct 26-319

Brenda Wilks - Rep
I affirm I am a Republican.

Judy L. Scott - Rep
I affirm I am a Republican.

Precinct 26-321

Marc Christensen - Rep
I affirm I am a Republican.

Emme McAbee - Rep
I affirm I am a Republican.

Precinct 26-323

Pat Thompson - Dem
I affirm I am a Democrat.

Michael Cobey - Dem
I affirm I am a Democrat.

Precinct Committee Officer

For this office only: In order to vote for precinct committee officer, a partisan office, you must affirm that you are a Democrat or a Republican and may vote only for one candidate from the party you select. Your vote for a candidate affirms your affiliation with the same party as the candidate. This preference is private and will not be matched to your name or shared.

Precinct 26-329

- Bo Mullen - Rep
I affirm I am a Republican.
- Robin S. Fry - Rep
I affirm I am a Republican.

Precinct 26-333

- Marlyn Jensen - Rep
I affirm I am a Republican.
- Shara Fetters - Rep
I affirm I am a Republican.

Precinct 26-335

- Stacie Snuffin - Rep
I affirm I am a Republican.
- Aleksey Mitin - Rep
I affirm I am a Republican.

Precinct 26-340

- Scott A. Berry - Rep
I affirm I am a Republican.
- Diana J. Landahl - Rep
I affirm I am a Republican.

Precinct 26-341

- Marc Nance - Rep
I affirm I am a Republican.
- Randy Boss - Rep
I affirm I am a Republican.

Precinct 26-350

- Jerry Gamache - Rep
I affirm I am a Republican.
- Daniel White - Rep
I affirm I am a Republican.

Precinct 27-396

- Patrick Casados - Dem
I affirm I am a Democrat.
- Karen Junker - Dem
I affirm I am a Democrat.

Precinct Committee Officer

For this office only: In order to vote for precinct committee officer, a partisan office, you must affirm that you are a Democrat or a Republican and may vote only for one candidate from the party you select. Your vote for a candidate affirms your affiliation with the same party as the candidate. This preference is private and will not be matched to your name or shared.

Precinct 27-402

- Brenda Wiest - Dem
I affirm I am a Democrat.
- Greg Stevens - Dem
I affirm I am a Democrat.

Precinct 27-406

- Linden Montgomery - Rep
I affirm I am a Republican.
- Leah Amyakar - Rep
I affirm I am a Republican.

Precinct 27-439

- Kit Burns - Dem
I affirm I am a Democrat.
- Nic van Putten - Dem
I affirm I am a Democrat.

Precinct 27-480

- Justin Leighton - Dem
I affirm I am a Democrat.
- Tim Farrell - Dem
I affirm I am a Democrat.

Precinct 27-629

- Erin Sarvis - Dem
I affirm I am a Democrat.
- Olgy Diaz - Dem
I affirm I am a Democrat.

Precinct 28-515

- Amber Muse - Rep
I affirm I am a Republican.
- Lisa Olson - Rep
I affirm I am a Republican.

Precinct 28-538

- Nikki Bufford - Dem
I affirm I am a Democrat.
- John Laakso - Dem
I affirm I am a Democrat.

Precinct Committee Officer

For this office only: In order to vote for precinct committee officer, a partisan office, you must affirm that you are a Democrat or a Republican and may vote only for one candidate from the party you select. Your vote for a candidate affirms your affiliation with the same party as the candidate. This preference is private and will not be matched to your name or shared.

Precinct 28-556

- Taniesha Lyons - Dem
I affirm I am a Democrat.
- Raymond C. Tsumpti, Jr. - Dem
I affirm I am a Democrat.

Precinct 28-567

- John E. Stanescki - Rep
I affirm I am a Republican.
- Victor Hogan - Rep
I affirm I am a Republican.
- John P. Colvin - Rep
I affirm I am a Republican.

Precinct 29-456

- Corwin Scott - Dem
I affirm I am a Democrat.
- Russell Parks - Dem
I affirm I am a Democrat.

Precinct 29-606

- Lillian Ferraz - Dem
I affirm I am a Democrat.
- Danielle Hennigan - Dem
I affirm I am a Democrat.

Precinct 29-610

- Cathy Pearsall-Stipek - Dem
I affirm I am a Democrat.
- Anzhane Slaughter - Dem
I affirm I am a Democrat.

Precinct 29-647

- Anna Nepomuceno - Dem
I affirm I am a Democrat.
- Siabhon Ayuso - Dem
I affirm I am a Democrat.

Precinct 29-688

- Lukas Barfield - Dem
I affirm I am a Democrat.
- Joe Bushnell - Dem
I affirm I am a Democrat.

Precinct Committee Officer

For this office only: In order to vote for precinct committee officer, a partisan office, you must affirm that you are a Democrat or a Republican and may vote only for one candidate from the party you select. Your vote for a candidate affirms your affiliation with the same party as the candidate. This preference is private and will not be matched to your name or shared.

Precinct 29-691

- Tonia Reed - Dem
I affirm I am a Democrat.
- Melissa Knott - Dem
I affirm I am a Democrat.

Precinct 31-805

- Tom Greene - Dem
I affirm I am a Democrat.
- Whit Worcester - Dem
I affirm I am a Democrat.

Precinct 31-886

- Steve McCoy - Rep
I affirm I am a Republican.
- Henry (David) Patrick - Rep
I affirm I am a Republican.