

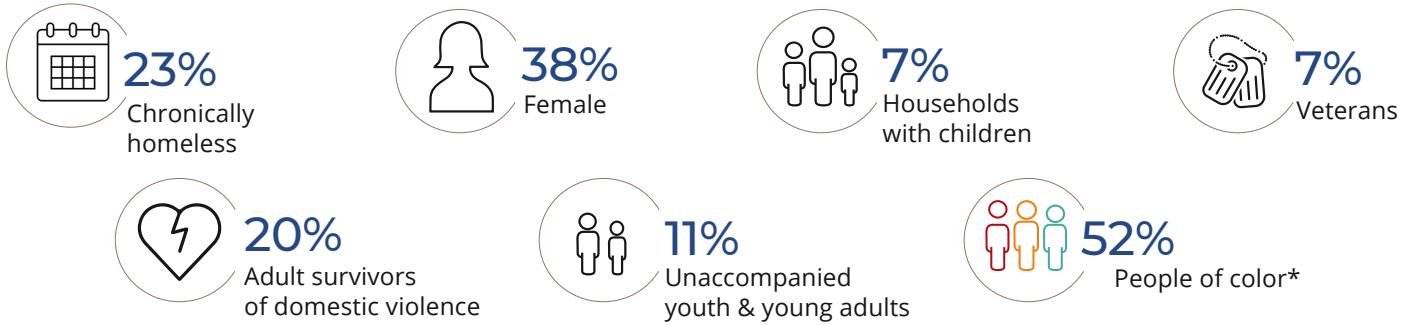


2022 Homeless Point-in-Time Count Results

Each January, Pierce County surveys people experiencing homelessness. This homeless "point-in-time count" is a one-day snapshot that captures the characteristics and situations of people living here without a home. We counted 1,851 people, but the official estimate for homelessness in Pierce County is much larger - 4,300 individuals. The lower Point-in-Time count number reflects the challenge of counting a large, geographically distributed unsheltered population over a 24-hour period.

1,851 People counted during the homeless Point-in-Time count

4,300 Official estimate of people experiencing homelessness in Pierce County

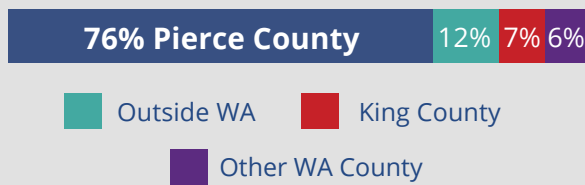


*People of color make up only 34% of the Pierce County population. (ACS estimate 2019)

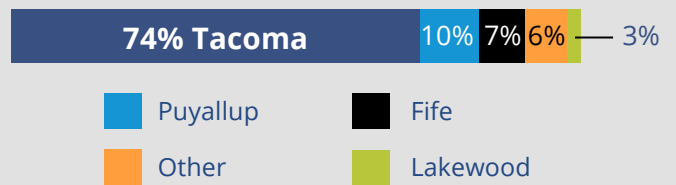
Not all people experiencing homelessness sleep outside



Most told us they lived in Pierce County before experiencing homelessness



Most told us they slept in Tacoma the night of the Point-in-Time Count

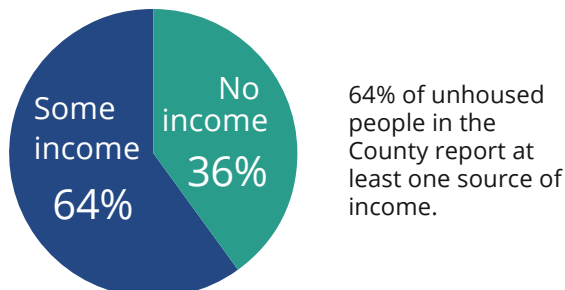


The main causes of homelessness are economic and housing-related

There are often many causes for becoming homeless. These are the top three most common:

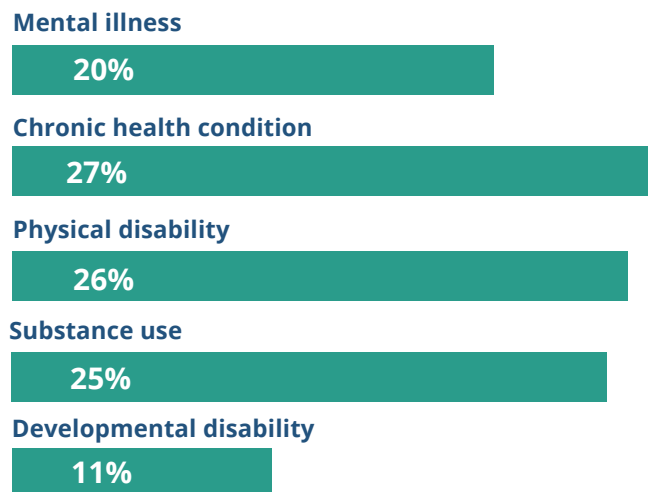
1. Family crisis/breakup
2. No affordable housing
3. Loss of job

Many unhoused people have an income



A chronic health condition is the most commonly reported disability

Here is the breakdown of the most commonly reported disabilities. Some reported having multiple disabilities.



Point-in-Time Count overview

- 198 - number of volunteers
- 343 - total number of individuals interviewed

For the full data set:

Visit www.piercecountywa.gov/PIT