

Rody Creek Channel Stabilization Project



Pierce County is working to reduce the transport of dirt and earth materials along the channel to stabilize the base of the ravine slopes along approximately 2,580 feet of Rody Creek channel between 80th and 72nd Streets East.

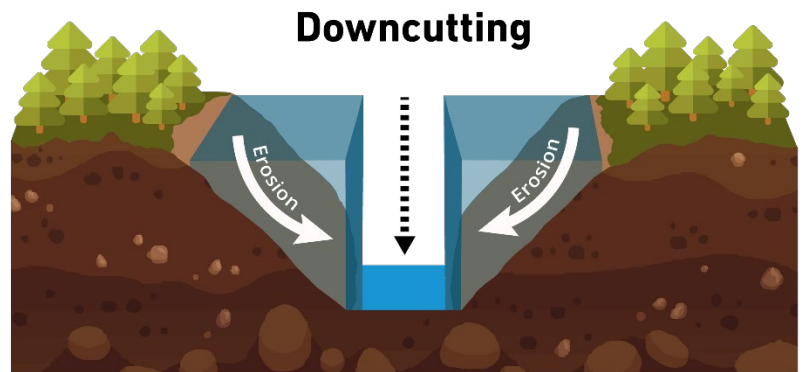
About the Project

The 1.6-mile creek feeds into Clarks Creek, which eventually joins the Puyallup River. Over the years, the channel bed has deepened by about 5 to 8 feet due to downcutting of the channel bed.

This project will help stabilize the channel bed from further downcutting and stabilize areas at the base of the ravine slopes.

This project will also help address Pierce County's goal to improve water quality in the Clarks Creek stream system, as required by the Clarks Creek Total Maximum Daily Load (TMDL) set by the Department of Ecology.

During construction, crews will be installing channel spanning log structures, timber frames and small branches and planting native vegetation. These features will help to reduce the movement of sediment further downstream.



Traffic Impacts

Residents in the area can expect minor traffic disruption along the project at 80th Street East, where heavy equipment will be working periodically from the roadway shoulder.

Large trucks will also be turning into and from 72nd Street East near 72nd Court East.

There will be flaggers at each site to direct traffic. Please drive with caution when traveling in the area.

Construction Timeline:

Late July – November 2022

Typical Work Hours:

7 a.m. – 6 p.m.
Monday – Friday

Funding Sources

- Pierce County Surface Water Management Utility Fund
- Washington State Department of Ecology

Contractor

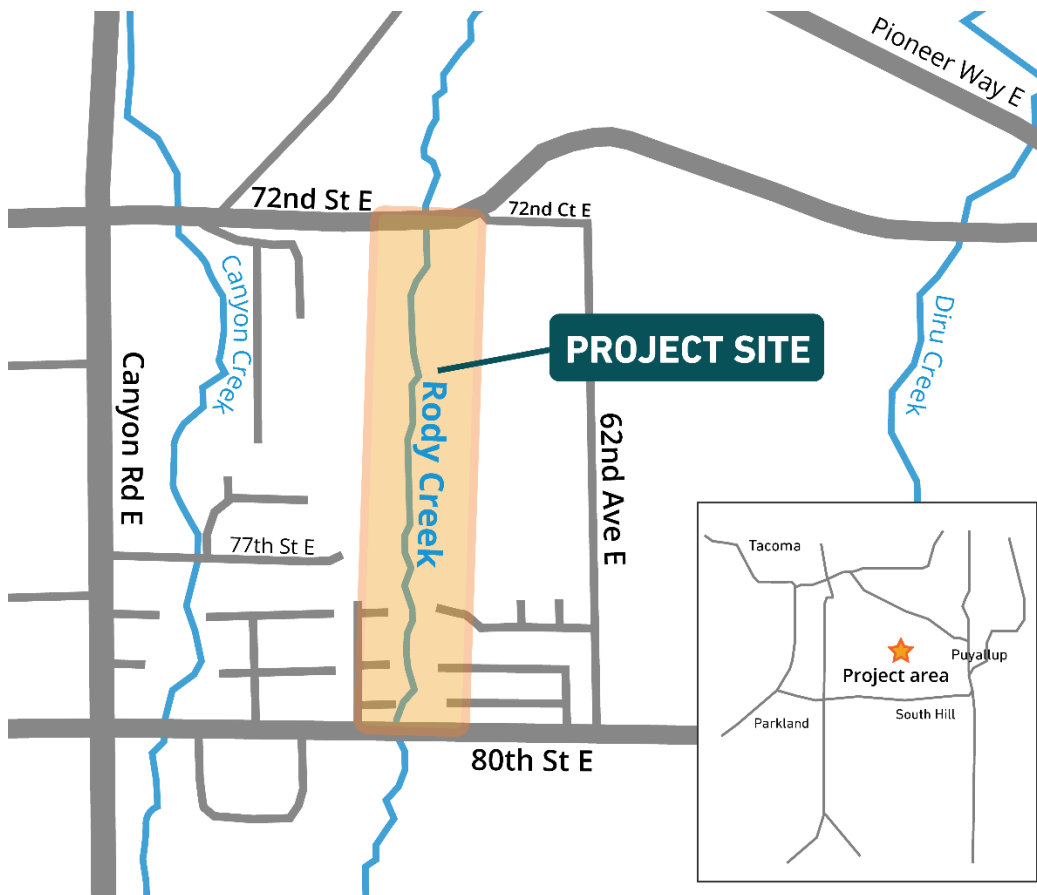
Ecogrind Site Solutions

Project Budget

\$925,000



Project Location



Timeline

Winter 2020

Permitting completed

Spring 2021

Final engineering design plans and specifications

Spring 2021

Construction easement acquisition

June 2022

Project contract executed

July 2022

Begin construction

November 2022

Anticipated completion

Contact Us

Randy Brake

Project Manager



(253) 798-4651



Randy.Brake@PierceCountyWa.gov

Learn More



PierceCountyWa.gov/RodyCreek80



Pierce County