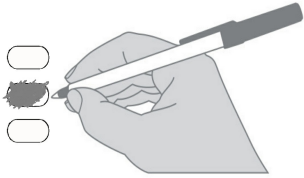


**Pierce County, Washington
General Election Provisional / Sample Ballot
November 8, 2022**

Instructions

How to vote



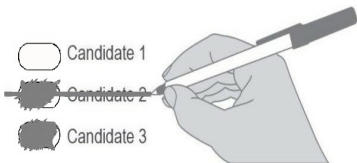
Use an ink pen to fill in the oval to the left of your choice.

Do not use felt tip markers.

Vote for one in each contest.

If you vote for more than one choice, your vote will not count for that race or measure.

How to fix a mistake



To make a correction, draw a line through the entire incorrect choice. You may make another choice.

Optional write-in

To vote for a write-in candidate, fill in the oval next to the write-in line and print the name.

Assistance & information

Visit: PierceCountyElections.org

To request a replacement ballot call
253-798-VOTE (8683).

Who donates to campaigns?

For a list of the people and organizations that donated to state and local candidates and ballot measure campaigns, visit www.pdc.wa.gov

State of Washington

Advisory Vote No. 39

Engrossed Substitute Senate Bill 5974

The legislature increased, without a vote of the people, the tax on aircraft fuel from 11 cents to 18 cents per gallon, costing \$14 million in its first ten years, for government spending. This tax increase should be:

- Repealed
 Maintained

Advisory Vote No. 40

Engrossed Substitute House Bill 2076

The legislature imposed, without a vote of the people, premiums on "transportation network companies" to provide workers compensation to their drivers, costing an indeterminate amount in its first ten years, for government spending. This tax increase should be:

- Repealed
 Maintained

Partisan Office Information

READ: Each candidate for partisan office may state a political party that he or she prefers. A candidate's preference does not imply that the candidate is nominated or endorsed by the party, or that the party approves of or associates with that candidate.

Federal - Partisan Offices

U.S. Senator

- Patty Murray
(Prefers Democratic Party)
 Tiffany Smiley
(Prefers Republican Party)
 Write-In

6th Congressional District

U.S. Representative

- Derek Kilmer
(Prefers Democratic Party)
 Elizabeth Kreiselmaier
(Prefers Republican Party)
 Write-In

Federal - Partisan Offices

8th Congressional District

U.S. Representative

- Kim Schrier
(Prefers Democratic Party)
 Matt Larkin
(Prefers Republican Party)
 Write-In

10th Congressional District

U.S. Representative

- Marilyn Strickland
(Prefers Democratic Party)
 Keith R Swank
(Prefers Republican Party)
 Write-In

State - Partisan Offices

Secretary of State

Two Year Unexpired Term

- Steve Hobbs
(Prefers Democratic Party)
 Julie Anderson
(Prefers Nonpartisan Party)
 Write-In

2nd Legislative District

State Representative Pos. 1

- Andrew Barkis
(Prefers Republican Party)
 Write-In

State Representative Pos. 2

- JT Wilcox
(Prefers Republican Party)
 Edward Meer
(States No Party Preference)
 Write-In

25th Legislative District

State Representative Pos. 1

- Kelly Chambers
(Prefers Republican Party)
 Jamie Smith
(Prefers Democratic Party)
 Write-In

State - Partisan Offices

25th Legislative District

State Representative Pos. 2

- Cyndy Jacobsen
(Prefers Republican Party)
 Cameron Sevens
(Prefers Democratic Party)
 Write-In

26th Legislative District

State Senator

- Emily Randall
(Prefers Democratic Party)
 Jesse L. Young
(Prefers Republican Party)
 Write-In

State Representative Pos. 1

- Adison Richards
(Prefers Democratic Party)
 Spencer Hutchins
(Prefers Republican Party)
 Write-In

State Representative Pos. 2

- Michelle Caldier
(Prefers Republican Party)
 Matt Macklin
(Prefers Democratic Party)
 Write-In

27th Legislative District

State Senator

Two Year Unexpired Term

- Yasmin Trudeau
(Prefers Democratic Party)
 Ashley M. Ray
(Prefers Republican Party)
 Write-In

State Representative Pos. 1

- Laurie Jenkins
(Prefers Democratic Party)
 Jalinnie Givens Jackson
(Prefers Republican Party)
 Write-In

State Representative Pos. 2

- Jake Fey
(Prefers Democratic Party)
 Janet Large
(Prefers Republican Party)
 Write-In

State - Partisan Offices

28th Legislative District

State Representative Pos. 1

- Mari Leavitt
(Prefers Democratic Party)
- Gabe Sachwitz
(Prefers Republican Party)
- _____
Write-In

State Representative Pos. 2

- Dan Bronoske
(Prefers Democratic Party)
- Susanna Keilman
(Prefers Republican Party)
- _____
Write-In

29th Legislative District

State Senator

- Steve Conway
(Prefers Democratic Party)
- Terry Harder
(Prefers Republican Party)
- _____
Write-In

State Representative Pos. 1

- Melanie Morgan
(Prefers Democratic Party)
- Brett Johnson
(Prefers Republican Party)
- _____
Write-In

State Representative Pos. 2

- Sharlett Mena
(Prefers Democratic Party)
- David H. Figuracion
(Prefers Republican Party)
- _____
Write-In

31st Legislative District

State Senator

- Phil Fortunato
(Prefers Republican Party)
- Chris Vance
(States No Party Preference)
- _____
Write-In

State Representative Pos. 1

- Holly Stanton
(Prefers Democrat Party)
- Drew Stokesbary
(Prefers Republican Party)
- _____
Write-In

State - Partisan Offices

31st Legislative District

State Representative Pos. 2

- Eric E. Robertson
(Prefers Republican Party)
- Carrie Wilbur
(Prefers Democratic Party)
- _____
Write-In

Pierce County

Nonpartisan Offices

Auditor

- Linda Farmer
- Deryl McCarty
- _____
Write-In

Prosecuting Attorney

- Mary Robnett
- _____
Write-In

Partisan Office

County Council District No. 1

- Dave Morell
(Prefers Republican Party)
- Timothy Tooker
(Prefers America First (R) Party)
- _____
Write-In

County Council District No. 5

- Marty Campbell
(Prefers Democratic Party)
- Nancy Dailey Slotnick
(Prefers Republican Party)
- _____
Write-In

County Council District No. 7

- Robyn Denson
(Prefers Democratic Party)
- Paula Lonergan
(Prefers Republican Party)
- _____
Write-In

Judicial - Nonpartisan Offices

State Supreme Court

Justice Position No. 1

- Mary I. Yu
- _____
Write-In

Justice Position No. 5

- Barbara Madsen
- _____
Write-In

Justice Position No. 6

- G. Helen Whitener
- _____
Write-In

Court of Appeals - Div. 2 Dist. 1

Position No. 1

- Bradley Maxa
- _____
Write-In

Pierce County District Court

Position No. 1

- Kevin A. McCann
- _____
Write-In

Position No. 2

- Claire Sussman
- _____
Write-In

Position No. 3

- Lizanne Padula
- _____
Write-In

Position No. 4

- Lloyd D. Oaks
- _____
Write-In

Judicial - Nonpartisan Offices

Pierce County District Court

Position No. 5

Four Year Short & Full Term

Dwayne L. Christopher

Write-In

Position No. 6

Karl Williams

Write-In

Position No. 7

Karla Buttorff

Write-In

Position No. 8

Jeanette A. Lineberry

Write-In

King County District Court

Southeast Electoral District

Judge Position No. 1

Four Year Short & Full Term

Leah Taguba

Write-In

Judge Position No. 2

Matthew York

Write-In

Judge Position No. 3

Nathaniel B. Green, Jr.

Write-In

Judge Position No. 4

Corinna Harn

Write-In

Judicial - Nonpartisan Offices

King County District Court

Southeast Electoral District

Judge Position No. 5

Virginia M. Amato

Write-In

Judge Position No. 6

Rhonda Laumann

Write-In

Tacoma Municipal Court

Position No. 1

Reed Speir

Dee Sonntag

Write-In

Position No. 2

Drew Ann Henke

Write-In

Position No. 3

Four Year Short & Full Term

Steve Krupa

Sergio C. Flores

Write-In

City of University Place

Special Election - Proposition No. 1

Levy Lid Lift for Support of Law Enforcement

The University Place City Council adopted Resolution No. 980 concerning a proposition to provide stable funding for law enforcement. The proposition would increase the City's regular property tax levy, currently \$0.776432913 per \$1,000 of assessed valuation, to \$1.285032913 per \$1,000 of assessed valuation, to be collected in 2023. This levy amount would be used to compute the limitations for subsequent levies. Taxpayers who qualify for an exemption under RCW 84.36.381 would be exempt from the increase. Should this proposition be approved?

Yes

No

Puyallup School District No. 3

Special Election - Proposition No. 1

Capital Levy for Safety, Security, Infrastructure and Technology Improvements

The Board of Directors of Puyallup School District No. 3 adopted Resolution No. 163 2021-22, concerning funding for safety, security, infrastructure and technology improvements. If approved, Proposition No. 1 will authorize the District to levy the following excess taxes on all taxable property within the District to fund improvements for safe/secure school sites and facilities, technology, traffic flow, and outdoor learning spaces:

Collection Years	Estimated Levy Rate per \$1,000 Assessed Value	Levy Amount
2023	\$0.82	\$20,833,000
2024	\$0.79	\$20,833,000
2025	\$0.75	\$20,833,000
2026	\$0.72	\$20,833,000
2027	\$0.70	\$20,833,000
2028	\$0.67	\$20,833,000

as provided in Resolution No. 163 2021-22. Should Proposition No. 1 be approved?

Yes

No

Dieringer School District No. 343

Special Election - Proposition No. 1

Capital Levy for Safety, Security and Critical Infrastructure Improvements

The Board of Directors of Dieringer School District No. 343 adopted Resolution No. 04-21-22 concerning a proposition for a levy for capital improvements. If approved, Proposition No. 1 will authorize the District to levy the following excess taxes, on all taxable property within the District, to make safety, security and critical infrastructure improvements (including upgrading safety and security systems, HVAC and lighting; replacing/repairing roofs; improving athletic fields):

Collection Years	Estimated Levy Rate per \$1,000 Assessed Value	Levy Amount
2023	\$1.46	\$4,771,110
2024	\$1.46	\$5,009,666
2025	\$1.46	\$5,260,149
2026	\$1.46	\$5,391,653

as provided in Resolution No. 04-21-22. Should Proposition No. 1 be approved?

- Yes
- No

Fire Protection District No. 5 (Gig Harbor Fire & Medic One)

Special Election - Proposition No. 1

Multi-Year EMS Levy Lid Lift

The Board of Fire Commissioners of Pierce County Fire Protection District No. 5 (Gig Harbor Fire & Medic One) adopted Resolution No. 2022-06, concerning an increase in the District's regular property tax levy. If approved, Proposition No. 1 will restore the District's regular property tax levy for emergency medical services to the previous voter-approved rate of fifty cents (\$0.50) per thousand dollars (\$1,000.00) of assessed valuation for collection in 2023, set the limit factor at six percent (6%) for each of the succeeding five (5) years and use the 2028 levy dollar amount for computing the limitation for subsequent levies. Should Proposition No. 1 be approved?

- Yes
- No

Fire Protection District No. 13 (Browns Point/Dash Point)

Special Election - Proposition No. 1

Multi-Year Levy Lid Lift

The Board of Fire Commissioners of Pierce County Fire Protection District No. 13 (Browns Point/Dash Point) adopted Resolution No. 22-332 concerning an increase in the District's regular property tax levy. If approved, Proposition No. 1 will restore the District's regular property tax levy for fire protection and emergency medical services to one dollar (\$1.00) per thousand dollars (\$1,000.00) of assessed valuation for collection in 2023, set the limit factor of up to six percent (6%) for each of the five (5) succeeding years, and use the 2028 levy dollar amount for computing the limitation for subsequent levies. Should Proposition No. 1 be approved?

- Yes
- No

Metropolitan Park District of Tacoma

Special Election - Proposition No. 1

Multi-Year Park and Recreation Maintenance and Operations Levy Lid Lift

The Board of Park Commissioners of the Metropolitan Park District of Tacoma, Washington adopted Resolution No. RR53-22 concerning an increase in the District's regular property tax levy. If approved, Proposition No. 1 will restore the District's regular property tax levy to the rate of \$0.75 per \$1,000.00 of assessed valuation for collection in 2023, set the limit factor at 106% for each of the five succeeding years, and use the 2028 levy dollar amount to calculate subsequent levy limits, to fund operations/maintenance of parks, playgrounds, sports fields, community centers, zoos; safety/security improvements; wildfire prevention; open space preservation; youth and teen programs. Should Proposition No. 1 be approved?

- Yes
- No