



# PLANNING ►►► OUR TOMORROW

COMPREHENSIVE PLAN UPDATE

# Integrating Climate Change

Into the 2024 Pierce County Comprehensive Plan Update

Becca Book

*Senior Planner*



[Becca.book@piercecountywa.gov](mailto:Becca.book@piercecountywa.gov)



(253) 798-6246

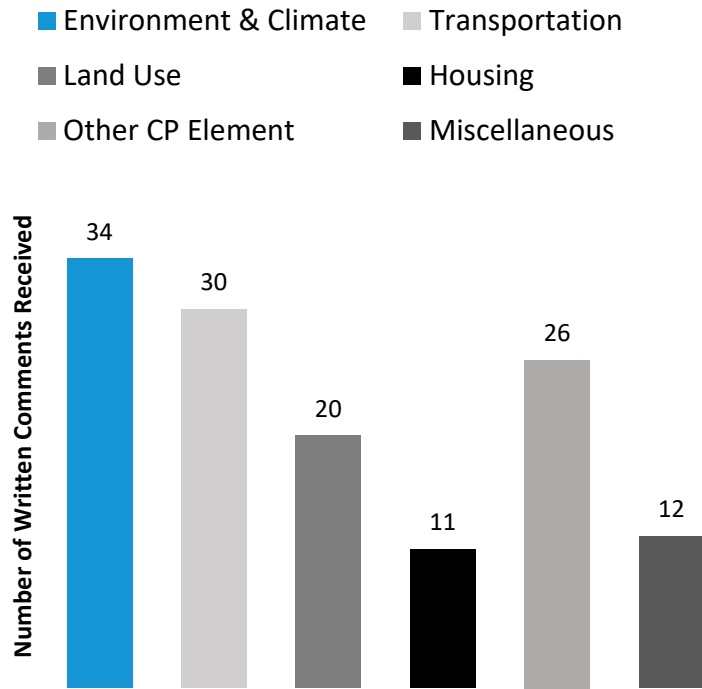
# Project Timeline



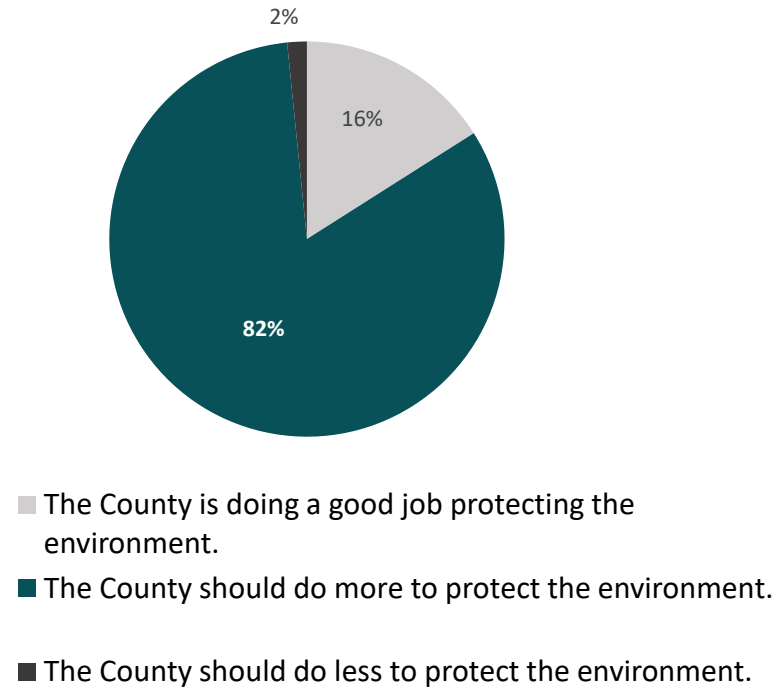
Dates are tentative, updated schedule will be posted on [PierceCountyWa.gov/CompPlan](https://PierceCountyWa.gov/CompPlan)

# Scoping Comment take aways

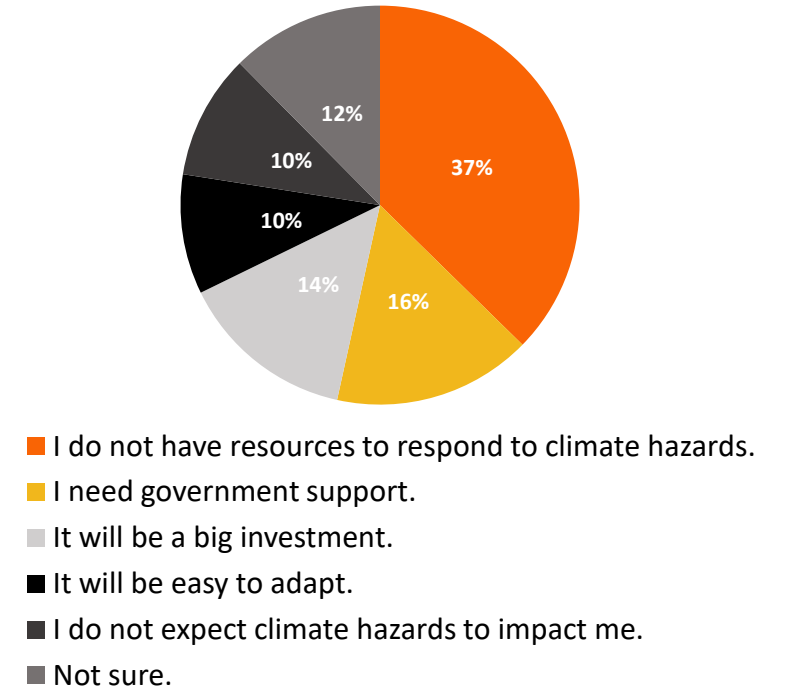
## Environment and Climate are top public concerns



## Survey respondents want the County to do more to protect the environment



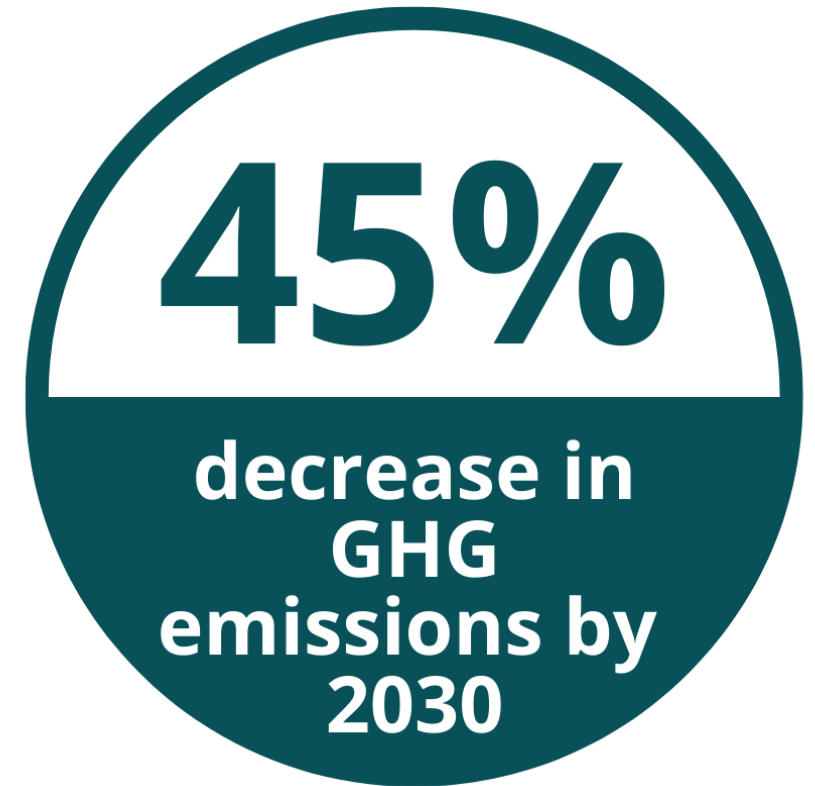
## Survey respondents do not feel they have the resources to respond to Climate Hazards



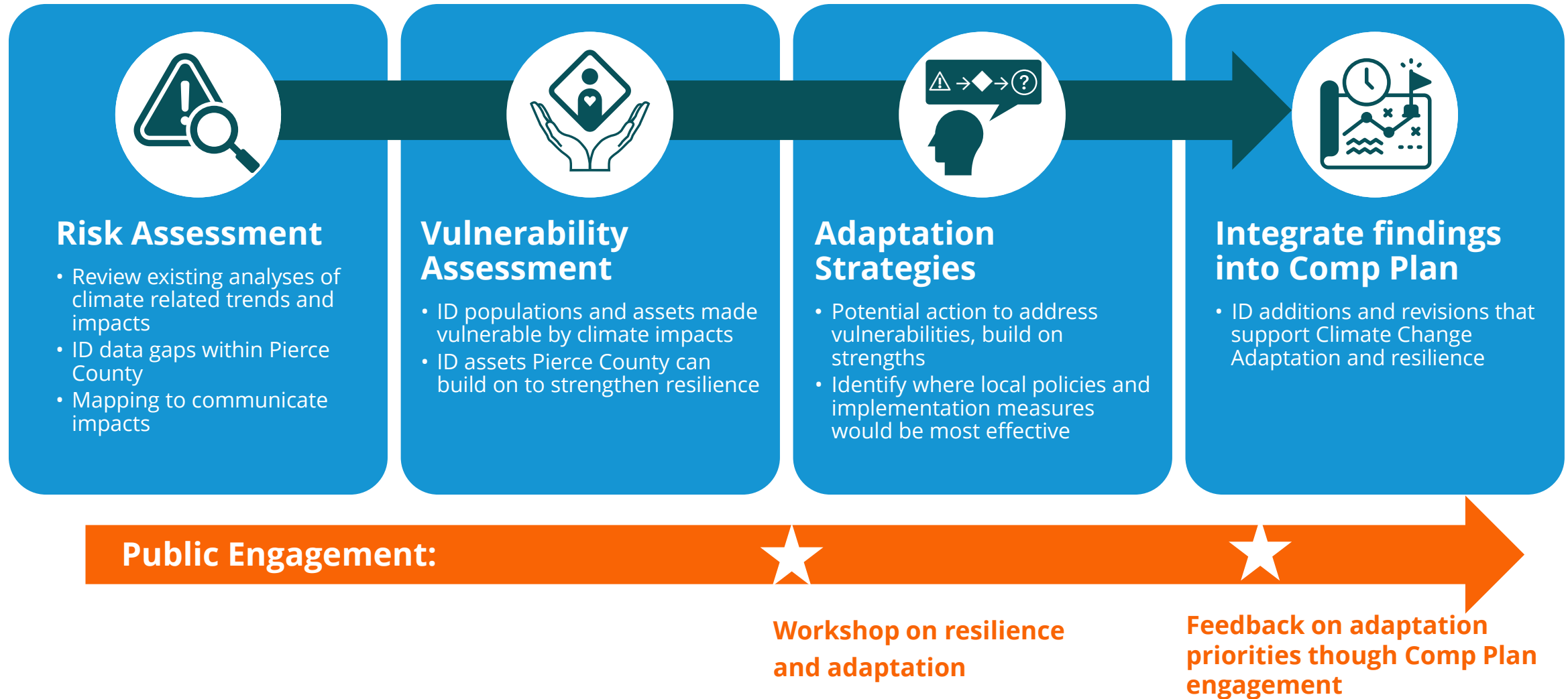
# Sustainability and Environment

## County Council Resolution No. R2022-77

- Address climate change, climate mitigation, and environmental resiliency
- Incorporate policies to achieve the *Sustainability 2030* goal of 45 percent reduction in greenhouse gas emissions by 2030
- Evaluate the vulnerability and risks associated with climate change
  - Climate-related trends
  - Current and anticipated impacts
  - Vulnerable populations and assets (social, economic, infrastructure, and environmental)
  - Risks for such assets and where measures would be most effective



# Risk and Vulnerability Assessment



# Climate Challenges and Policy Solutions

- Strategy meets standard
- ◐ Strategy present but does not meet highest standard
- Strategy not present

Climate issues that require policy updates in the Comp plan	Sustainability 2030	Commerce Model Element	EcoNW Audit	Risk and Vulnerability Assessment
Protect and Restore Natural Resources That Sequester and Store Carbon	●	●	●	<i>Pending...</i>
Transportation System Electrification	●	●	●	<i>Pending...</i>
Vehicle Miles Traveled Reduction	●	●	●	<i>Pending...</i>
Climate Friendly Building Codes and Practices	●	●	●	<i>Pending...</i>
Alternative Energy and Energy Conservation	●	●	○	<i>Pending...</i>
Solid Waste Emissions	●	●	○	<i>Pending...</i>
Climate Resilience	◐	●	◐	●



# PLANNING ►►► OUR TOMORROW

*COMPREHENSIVE PLAN UPDATE*



## Questions

[www.PierceCountyWa.gov/CompPlan](http://www.PierceCountyWa.gov/CompPlan)



Becca Book | [Becca.Book@PierceCountyWa.gov](mailto:Becca.Book@PierceCountyWa.gov)