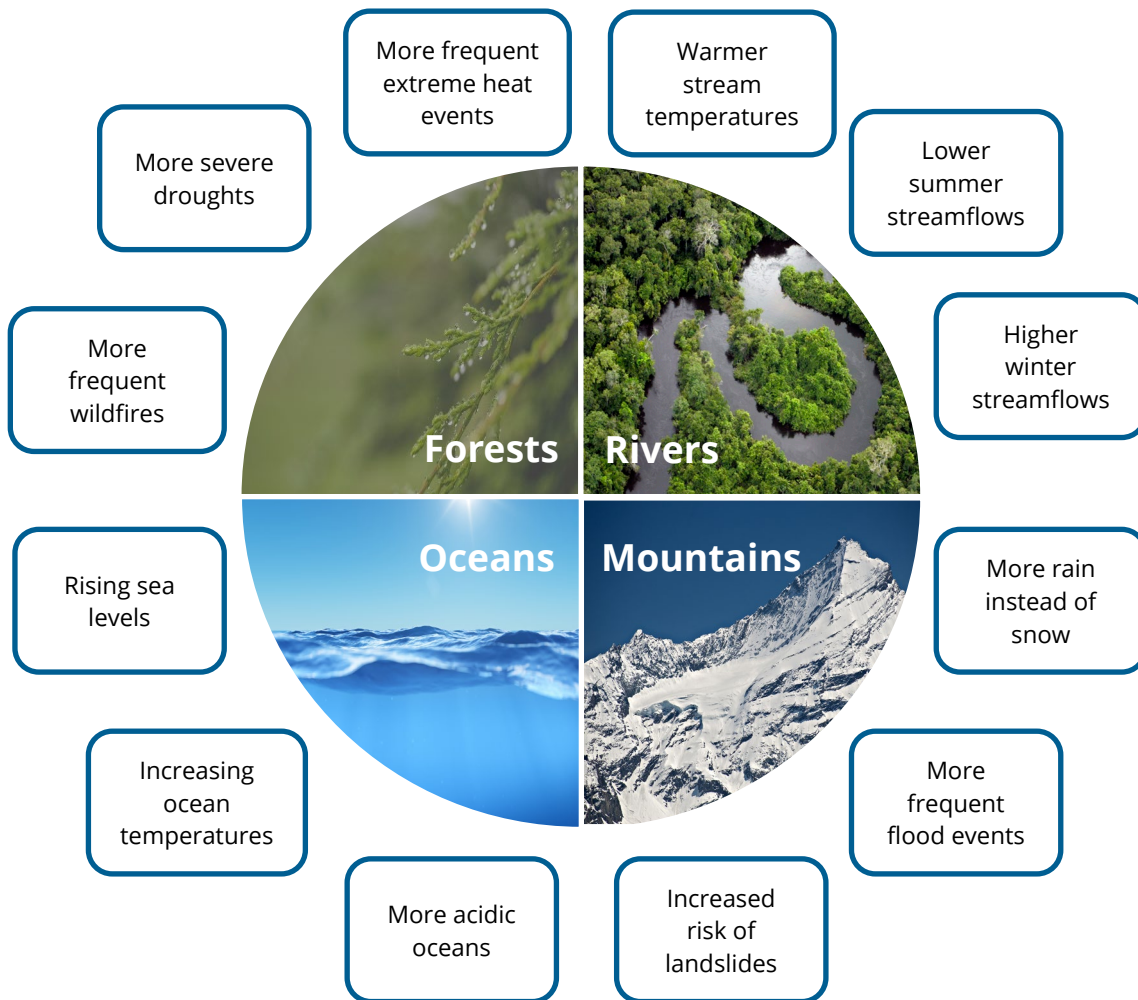


Climate Change & Pierce County

Climate change is here.

The climate is changing in Pierce County and across Puget Sound. Since scientists started tracking long-term patterns around the world, there have been a number of observed changes in temperatures, rainfall and snow patterns, sea levels, wildfires, droughts, and the pH of the oceans. These changes are happening more rapidly because of human activities and will affect Pierce County's environment, economy, and communities in many ways.



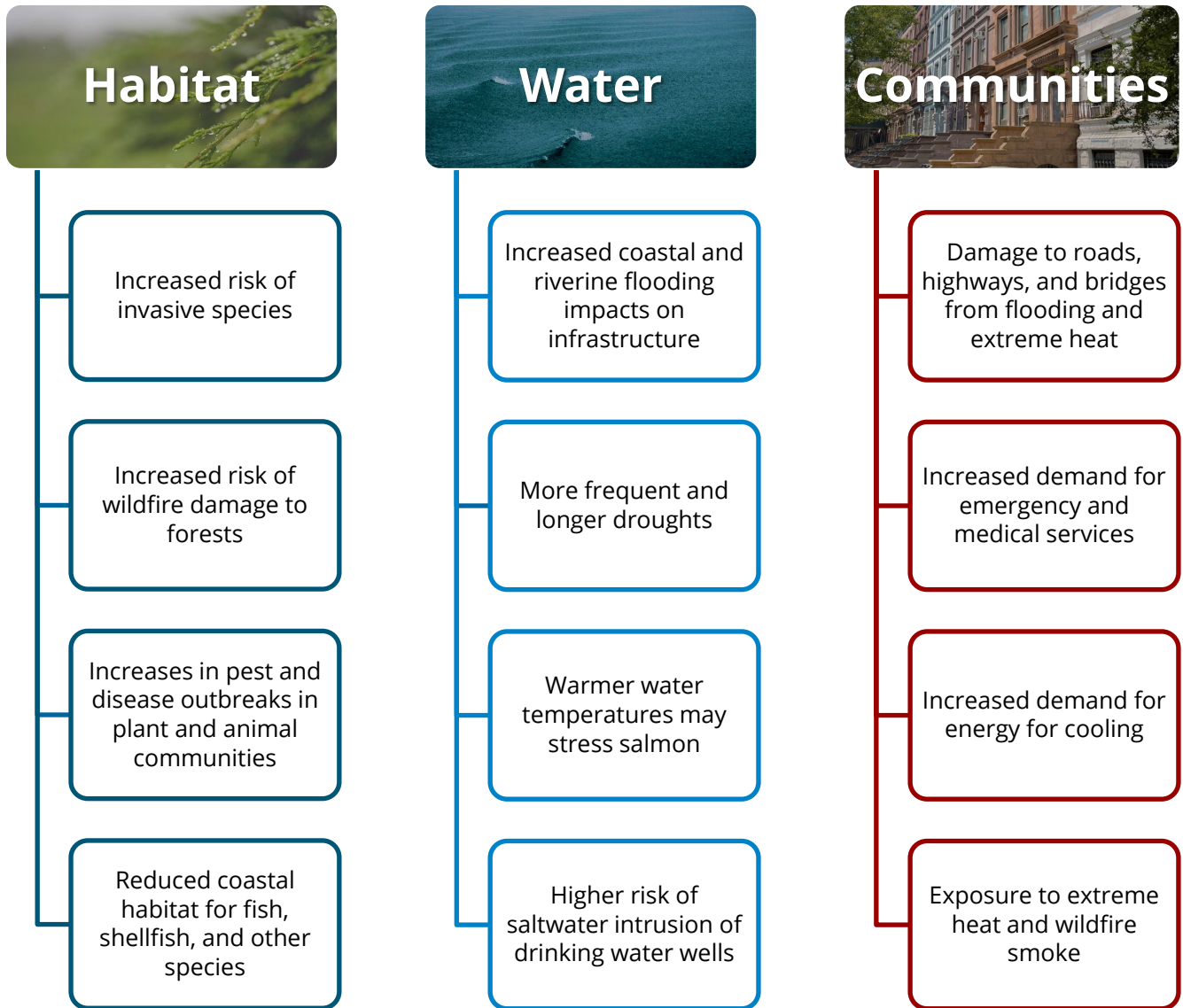
Sources

1. Mauger et al. 2015. State of Knowledge: Climate Change in Puget Sound. Climate Impacts Group, University of Washington, Seattle, WA.
2. Miller et al. 2018. Projected Sea Level Rise for Washington State – A 2018 Assessment. A collaboration of Washington Sea Grant, University of Washington Climate Impacts Group, University of Oregon, University of Washington, and US Geological Survey.
3. Pierce County Climate Change Resilience Strategy: <https://www.piercecountywa.gov/5558/Climate-Change-Resilience#>

What does climate change mean for Pierce County?

Pierce County Planning and Public Works is conducting a climate vulnerability assessment to better understand:

- What changes in climate the county is likely to experience
- Which communities and County assets (e.g., roads, buildings, parks, farms, neighborhoods) are most at risk from those changes
- What the county and its partners can do to reduce the potential harms posed by climate change



**Learn more and sign up
for updates on our website**

