

# 2024-2027 DRAFT AREA PLAN

Pierce County Human Services  
Aging and Disability Resources

Public Hearing – Sept. 19, 2023

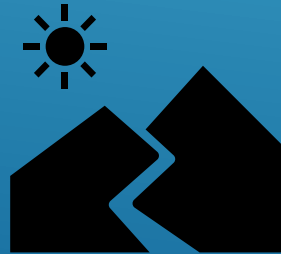
# AGING & DISABILITY RESOURCES

## ❖ Mission

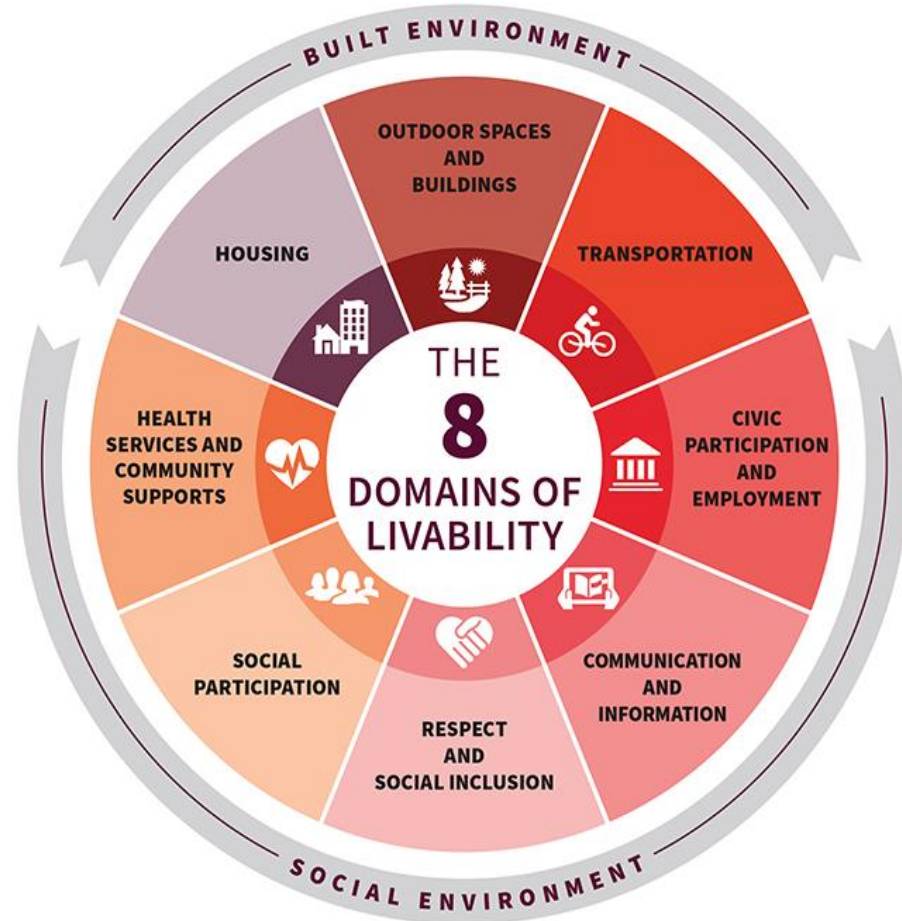
To ensure access to services and supports promoting community living for older adults, persons with disabilities and their caregivers

## ❖ Vision

A livable Pierce County for persons of all ages, abilities and communities



# AGE-FRIENDLY COMMUNITIES

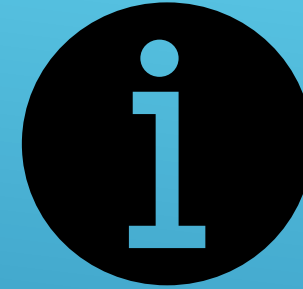


AARP The 8 Domains of Livability

LEARN MORE:  
[AARP.org/Livable](https://www.aarp.org/Livable)  
[Livable@AARP.org](mailto:Livable@AARP.org)

# PURPOSE OF THE AREA PLAN

- ▶ Identify local needs and long term service gaps
- ▶ Gather community input on preferred services
- ▶ Set funding priorities for long term services and supports
- ▶ Develop goals and objectives for improving the local long term services network
- ▶ Determine advocacy priorities
- ▶ Report on accomplishments



# COMMUNITY INPUT



# COMMUNITY INPUT SUMMARY

- ▶ **Community Survey - online & paper**
  - ▶ **781 respondents\***

- ▶ **Essential / Important Services**

- ▶ Information
- ▶ Help to access
- ▶ Transportation

- ▶ **Older Adults – Top 3 Needs**

- ▶ Food
- ▶ Health Care
- ▶ Housing

- ▶ **Adults with Disabilities – Top 3 Needs**

- ▶ Food
- ▶ In-home personal care
- ▶ Health care

- ▶ **Informal / Family Caregivers – Top 3 Needs**

- ▶ Information / Help accessing resources
- ▶ Respite care
- ▶ Emotional support

- ▶ **Post-COVID-19 – Top Activity Interests**

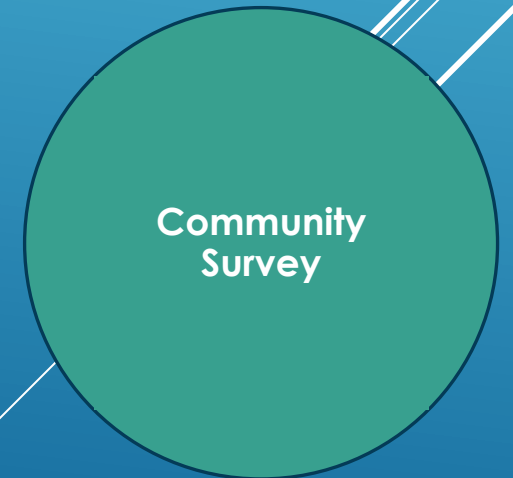
- ▶ Exercise
- ▶ Social Activities
- ▶ Hobbies

- ▶ **Invest More**

- ▶ In-home personal care
- ▶ Housekeeping help
- ▶ Home delivered meals
- ▶ Minor home repair

**\*SNAP SHOT:**

- 83% 60+ yrs old
- 74% female
- 22% non-White/BIPOC
- 6% Hispanic
- 4% LGBTQIA+
- 47% have a disability
- 30% family caregivers
- 14% veterans
- 57% low income



# COMMUNITY INPUT SUMMARY

## ▶ *Case Manager Feedback*

### ▶ 40 ADR Direct Service staff\*

#### ▶ Older Adults / Adults with Disabilities– Top 3 Needs

- ▶ Housing
- ▶ Transportation
- ▶ Paid in-home caregivers

#### ▶ Informal / Family Caregivers – Top 3 Needs

- ▶ Emotional Support / Mental Health
- ▶ Legal Support
- ▶ Education / Training

#### ▶ Barriers to Access

- ▶ Knowledge of services / supports
- ▶ Technology
- ▶ Paid in-home caregiver shortage
- ▶ Transportation
- ▶ Language

#### ▶ Invest More

- ▶ Transportation
- ▶ Paid in-home caregiver wages
- ▶ Minor home repair

#### \*SNAP SHOT:

- 19 General & Family Caregiver CMs
- 21 Medicaid CMs
- 9 Bilingual CMs



Key Informant  
Input

# COMMUNITY INPUT SUMMARY

## ➤ *LGBTQ Needs Assessment* - Online & paper survey

### ▶ 105 respondents\*

- ▶ Plans for Aging in Place
  - ▶ In own home
  - ▶ Spouses / partners providing care
- ▶ Current Health Concerns
  - ▶ Chronic health conditions
  - ▶ Isolation / Loneliness
  - ▶ Physical or cognitive disabilities
- ▶ Potential Barriers to Aging in Place
  - ▶ Declining health
  - ▶ Lack of informal / family caregivers

- ▶ Top Unmet Needs
  - ▶ Emotional / Mental health supports
  - ▶ Transportation
  - ▶ Food
  - ▶ Utility Assistance
- ▶ Priority Interests
  - ▶ Social activities
  - ▶ Exercise / enrichment classes
  - ▶ LGBT+ specific affordable housing
  - ▶ LGBT+ specific assisted living / care

#### \*SNAP SHOT:

- 81% 55-74 yrs old
- 5% Hispanic
- 10% Other BIPOC
- 77% Lesbian or Gay
- 10% Transgender
- 7% Non-binary / Other
- 26% veterans
- 31% married
- 39% have a disability



Key Informant  
Input



# PRIORITIZING DISCRETIONARY FUNDS



# CRITERIA FOR PRIORITIZING

- **Does it reach the priority/target populations?**
  - Low income
  - Physical or mental disabilities
  - Alzheimer's / dementia or other cognitive impairments
  - Limited English / language barriers
  - Homebound / isolated
  - Culturally or socially isolated
  - At risk of institutional placement



# CRITERIA FOR PRIORITIZING

## ➤ Does it meet a basic need?

- Food
- Shelter
- Physical / emotional health
- Safety
- Assistance with normal daily tasks



# CRITERIA FOR PRIORITIZING

## ➤ Does it also . . .

- support a person's ability to remain at home for as long as possible?
- fill a service gap in the community based on local input?
- help accomplish Area Plan Goals and Objectives?
- promote healthy lifestyle choices?
- help avoid use of higher cost services?



# LOCAL SERVICE PRIORITIES

Level One	Level Two	Level Three
<ol style="list-style-type: none"><li>1. Aging &amp; Disability Resource Center (ADRC), including Community Living Program</li><li>2. Case Management</li><li>3. Family Caregiver Support</li><li>4. Home Delivered Meals</li><li>5. Senior Mealsites</li><li>6. Transportation</li><li>7. Social Isolation Supports</li><li>8. Counseling</li></ol>	<ol style="list-style-type: none"><li>1. Falls Prevention</li><li>2. LGBTQ Services</li><li>3. Adult Day Health</li></ol>	<ol style="list-style-type: none"><li>1. Legal Aid Services</li><li>2. Evidence-based dementia intervention</li><li>3. Kinship Caregiver Support</li><li>4. LTC Ombudsman</li><li>5. Foot Care Services</li></ol>

# **2024-2027 GOALS & OBJECTIVES**



# OVERVIEW

## ▶ **Central Themes:**

- ▶ Healthy Aging
- ▶ Delaying Entry into Medicaid Services
- ▶ Person-Centered Home & Community Based Services
- ▶ Tribal Sovereignty – Services for Older Native Americans
- ▶ Post-COVID-19 Response and Recovery

## ▶ **Must Address:**

- ▶ Outreach / engagement to priority & underserved populations
  - ▶ Supports for family caregivers
  - ▶ Evidence based programming
  - ▶ Person-centered practices & program development
  - ▶ Tribal engagement & service planning
- 

# LOCAL PRIORITY ISSUE AREAS 2024-2027

## BUILT ENVIRONMENT

- **Housing & Related Supports**

## SOCIAL ENVIRONMENT

- **Health / Wellness**
  - Nutrition
  - Emotional Support / Mental Health
  - Social Engagement
  - Evidenced-based Falls Prevention / Health Promotion
- **Caregiver Supports**
- **Information & Access**
  - Information, Assistance and Outreach
  - Transportation Access
- **Service to Older Native Americans**



# 2022-2023 PROGRESS REPORT



# ACTIVITIES & ACCOMPLISHMENTS

Issue Area	Primary Focus	2022-23 Highlights
Transportation	<ul style="list-style-type: none"> <li>Improve transportation options and access</li> </ul>	<ul style="list-style-type: none"> <li>Continued to serve on local transportation coalition and regional special needs transportation committee</li> </ul>
Housing	<ul style="list-style-type: none"> <li>Promote access to safe, affordable housing</li> </ul>	<ul style="list-style-type: none"> <li>Participated in joint outreach with Pierce County Assessor-Treasurer's office to promote property tax assistance programs.</li> <li>Assisted 117 eligible older adults through the ADR Community Living Program, providing supports to stabilize and maintain safe housing / living situation.</li> <li>Provided input / advocacy related to the Pierce Co. Affordable Housing Sales Tax implementation plan.</li> </ul>
Information & Access	<ul style="list-style-type: none"> <li>Improve community awareness of and access to local long term services and supports</li> </ul>	<ul style="list-style-type: none"> <li>Conducted 359 outreach events / activities, reaching an estimated 14,836 individuals</li> <li>Provided information and assistance to 7,856 individuals; 3% were of BIPOC communities</li> <li>Coordinated with local pharmacies to promote 17 vaccine / booster clinics and provided incentives for 159 high risk individuals to receive COVID-19 vaccine or booster.</li> </ul>

# ACTIVITIES & ACCOMPLISHMENTS

Issue Area	Primary Focus	2022-23 Highlights
Nutrition	<ul style="list-style-type: none"> <li>• Improve nutritional well-being</li> </ul>	<ul style="list-style-type: none"> <li>• Allocated additional state funds budgeted for one-time home delivered meals and Hunger Relief support</li> <li>• Awarded Older Americans' Act home delivered meal contract to one new provider</li> <li>• Produced and mailed Senior Nutrition Services postcard to over 67,000 residences in high need / low equity areas of Pierce County</li> </ul>
Health Promotion	<ul style="list-style-type: none"> <li>• Promote evidence-based programs to reduce fall risk</li> </ul>	<ul style="list-style-type: none"> <li>• Provided 1,192 free evidence-based health promotion / fall prevention classes for 239 residents</li> <li>• Released Request for Proposal to continue the availability of free, evidence-based falls prevention services</li> </ul>
Emotional / Mental Health	<ul style="list-style-type: none"> <li>• Support emotional well-being and mental health</li> </ul>	<ul style="list-style-type: none"> <li>• Released Request for Proposal and awarded contract to provide new services to reduce social isolation and loneliness among older adults</li> <li>• Continued to provide counseling and support group services to unpaid family and kinship caregivers</li> <li>• Supported evidence-based PEARLS certification training costs for up to 25 community professionals</li> </ul>


# ACTIVITIES & ACCOMPLISHMENTS

Issue Area	Primary Focus	2022-23 Highlights
Caregiver Supports	<ul style="list-style-type: none"> <li>Support family / informal caregivers providing unpaid care</li> </ul>	<ul style="list-style-type: none"> <li>Sponsored / hosted over 247 workshops and presentations reaching an estimated 11,765 persons with Family Caregiver program info</li> <li>Continued to co-sponsor the annual Pierce County Alzheimer's Caregiver Conference reaching 65 and 45 attendees in 2022 and 2023 respectively.</li> </ul>
Diversity, Equity & Inclusion	<ul style="list-style-type: none"> <li>Deliver culturally competent services that welcome and respect all forms of diversity</li> </ul>	<ul style="list-style-type: none"> <li>Added Case Management staffing to expand language and cultural capacity, in Medicaid, General and Family Caregiver programs</li> <li>Continued support and promotion of free, online LGBTQ Yoga class</li> <li>Sponsored four SAGETable events</li> </ul>
Services to Older Native Americans	<ul style="list-style-type: none"> <li>Collaborate with the Puyallup Tribe of Indians to provide information and access to culturally-relevant long term services and supports</li> </ul>	<ul style="list-style-type: none"> <li>Provided monthly informational updates to Puyallup Tribal Health Authority Tribal Nurse Educators and Patient Benefit Coordinator regarding workshops, trainings, resources and other information</li> <li>Participated in bi-annual state-sponsored Area Agency on Aging / Tribal summits</li> <li>Participated in WA Government to Government and 7.01 Policy Plan training</li> </ul>

# 2024 PROPOSED BUDGET



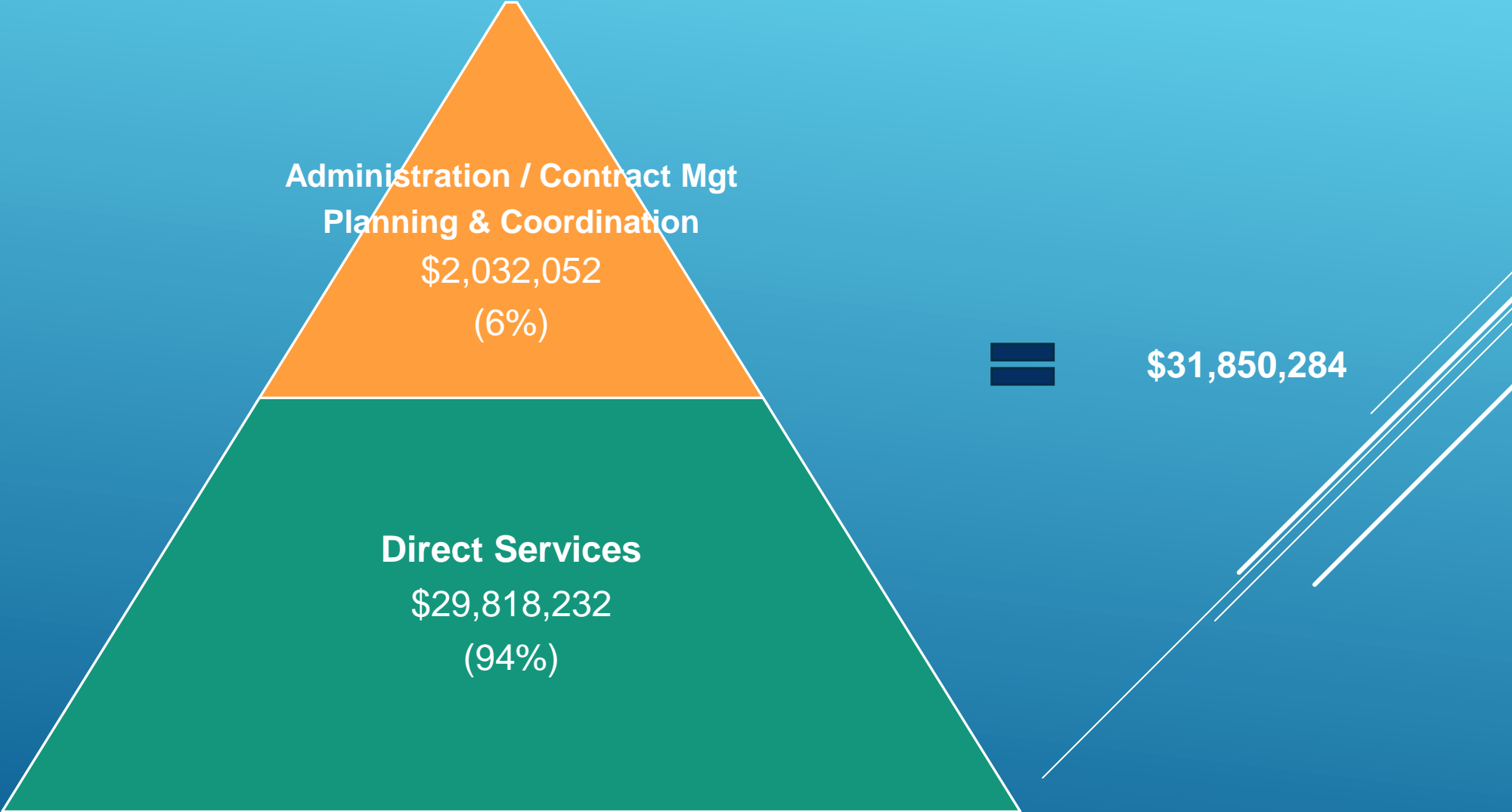
# 2024 FISCAL CONSIDERATIONS

- ▶ **Federal COVID-19 Response** – funds received to respond to local needs as result of COVID-19 public health emergency will end
  - ▶ **Medicaid Transformation Demonstration** – Federal demonstration funding is renewed for five years
  - ▶ **Health Home** – received rate increase for Health Home Care Coordination services
  - ▶ **State Revenues** – received increase in State funds for AAA Case Management and kinship caregiver services, and new designated funding to support senior nutrition services
  - ▶ **WA Cares Revenue** – new funding received to support outreach, navigation and network development implementing the State's new long term care benefit
- 

# 2024 PROJECTED REVENUES

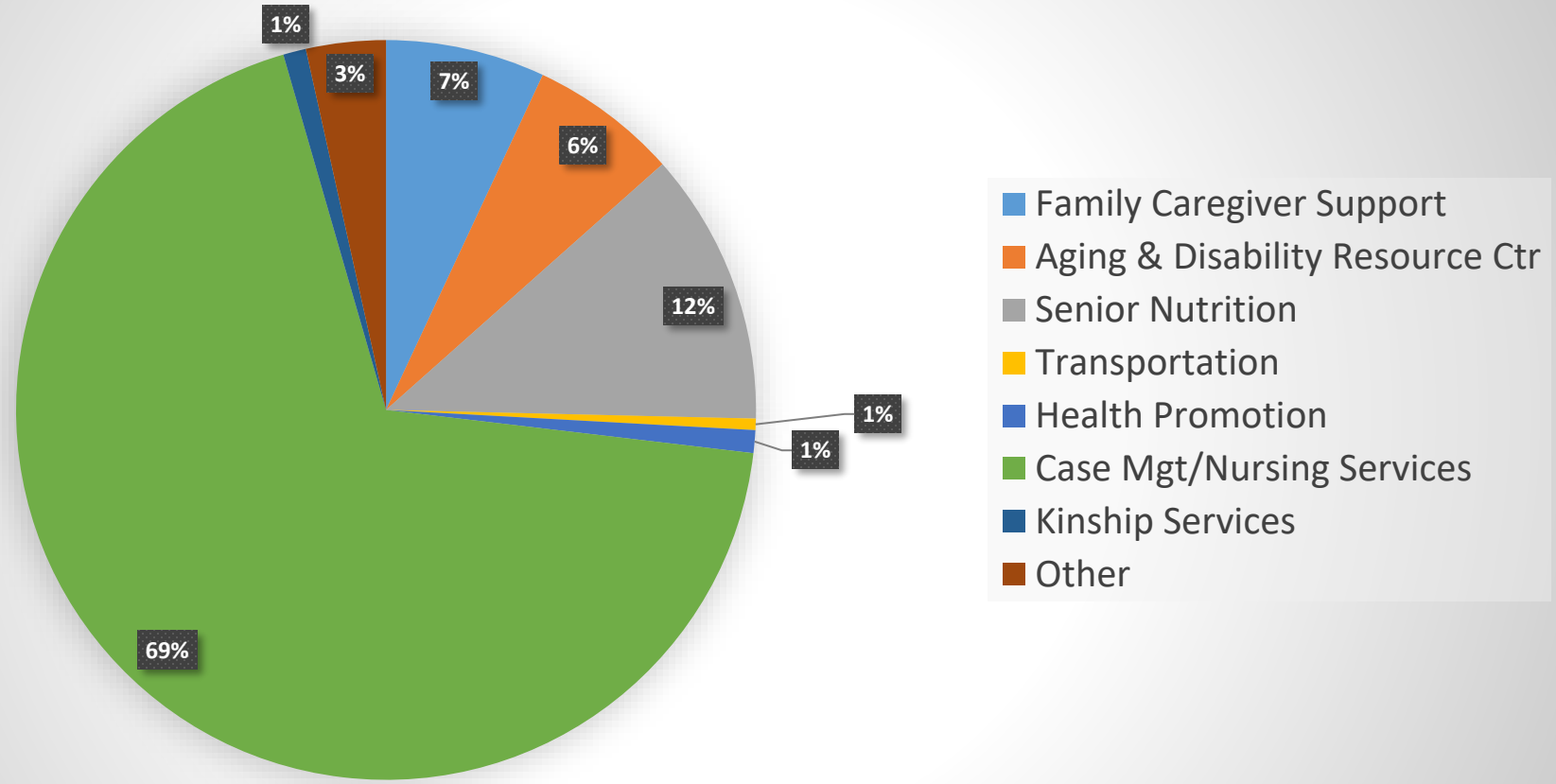
Revenue Sources	2023 Actual Revenue	2024 Projected Revenue	Net Change
DISCRETIONARY	\$4,049,606	\$4,358,196	\$308,589
<i>NON-</i> DISCRETIONARY	\$27,442,903	\$27,492,088	\$49,185
<b>GRAND TOTAL</b>	<b>\$31,492,509</b>	<b>\$31,850,284</b>	<b>\$357,774</b>

# 2024 TOTAL ESTIMATED BUDGET





# DIRECT SERVICES: PROPOSED DISTRIBUTION 2024



# PUBLIC COMMENT

## Questions to Consider:

- ▶ Does the Area Plan address the most critical issues impacting Pierce County?
- ▶ Has ADR made the right decisions regarding funding of programs / services?
- ▶ Should ADR consider any other collaborative partnerships to help us meet Area Plan goals?
- ▶ Do you have any other recommendations?



***Thank you!***



**Comments accepted until Sept. 22, 2023**

Connie Kline, Social Services Supervisor

[connie.kline@piercecountywa.gov](mailto:connie.kline@piercecountywa.gov)

Fax - (253) 798-2839