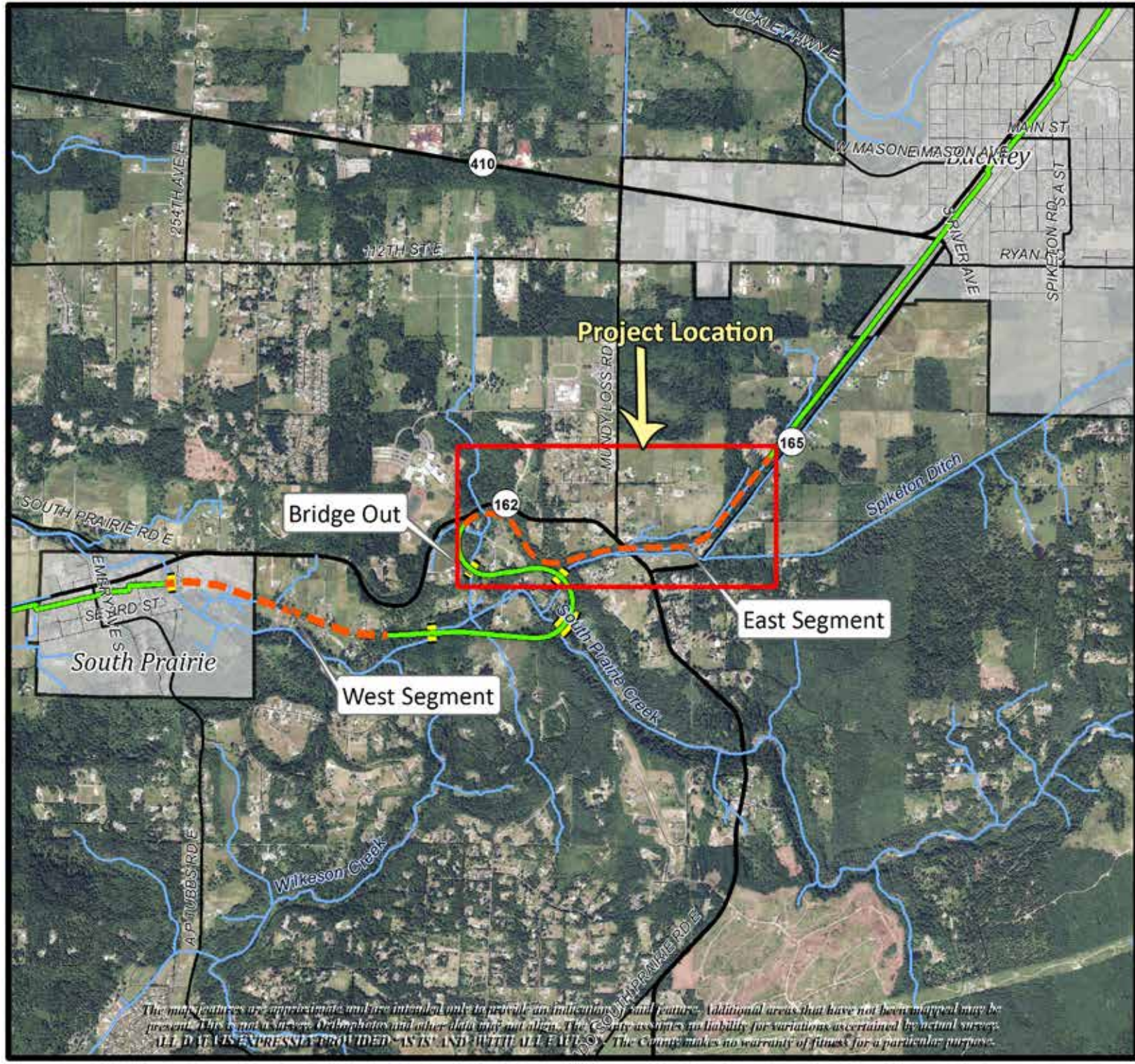


# FOOTHILLS NATIONAL RECREATION TRAIL - BUCKLEY TO SOUTH PRAIRIE

## Vicinity Map



*The map features are approximate and are intended only to provide an indication of said features. Additional areas that have not been mapped may be present. This is not a survey. Orthophotos and other data may not align. The County assumes no liability for variations ascertained by actual survey. ALL DATA IS EXPRESSLY PROVIDED "AS IS" AND "WITH ALL FAULTS". The County makes no warranty of fitness for a particular purpose.*

### Legend

- Existing Foothills Trail
- - - Planned Foothills Trail
- Trail Bridges
- Incorporated Cities
- Limited Access State Highway
- Other State Highway
- Major Road
- Arterial
- Residential



Pierce County  
Parks and Recreation

0 0.25 0.5 1 Miles