

Summary	Census 2010	2016	2021
Population	116,475	126,276	134,644
Households	40,063	43,046	45,716
Families	30,974	33,138	35,125
Average Household Size	2.89	2.92	2.93
Owner Occupied Housing Units	32,114	34,035	36,049
Renter Occupied Housing Units	7,949	9,011	9,667
Median Age	35.6	36.5	37.0
Trends: 2016 - 2021 Annual Rate	Area	State	National
Population	1.29%	1.11%	0.84%
Households	1.21%	1.06%	0.79%
Families	1.17%	1.01%	0.72%
Owner HHs	1.16%	0.99%	0.73%
Median Household Income	2.05%	2.57%	1.89%

Households by Income	2016		2021	
	Number	Percent	Number	Percent
<\$15,000	2,117	4.9%	2,304	5.0%
\$15,000 - \$24,999	2,007	4.7%	1,876	4.1%
\$25,000 - \$34,999	2,358	5.5%	2,206	4.8%
\$35,000 - \$49,999	4,387	10.2%	4,105	9.0%
\$50,000 - \$74,999	8,412	19.5%	6,599	14.4%
\$75,000 - \$99,999	7,855	18.2%	8,955	19.6%
\$100,000 - \$149,999	10,090	23.4%	12,432	27.2%
\$150,000 - \$199,999	3,656	8.5%	4,665	10.2%
\$200,000+	2,164	5.0%	2,574	5.6%
Median Household Income	\$80,522		\$89,124	
Average Household Income	\$93,879		\$102,857	
Per Capita Income	\$32,307		\$35,229	

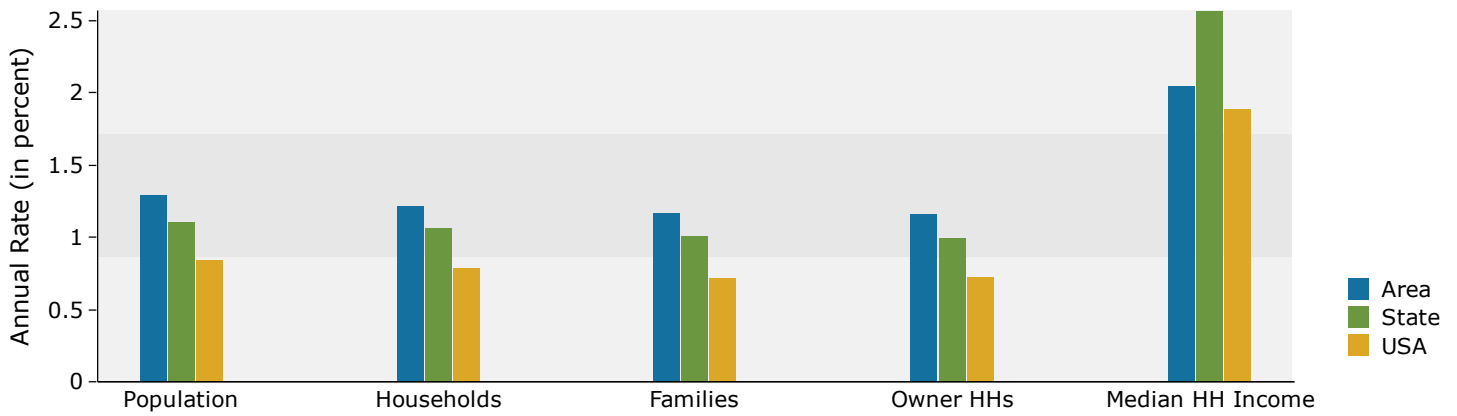
Population by Age	Census 2010		2016		2021	
	Number	Percent	Number	Percent	Number	Percent
0 - 4	8,090	6.9%	8,442	6.7%	8,903	6.6%
5 - 9	8,870	7.6%	9,069	7.2%	9,278	6.9%
10 - 14	9,646	8.3%	9,463	7.5%	9,831	7.3%
15 - 19	9,401	8.1%	8,615	6.8%	8,676	6.4%
20 - 24	6,197	5.3%	7,730	6.1%	6,516	4.8%
25 - 34	15,005	12.9%	17,126	13.6%	19,982	14.8%
35 - 44	18,380	15.8%	18,343	14.5%	19,776	14.7%
45 - 54	19,002	16.3%	18,897	15.0%	17,827	13.2%
55 - 64	12,370	10.6%	15,783	12.5%	17,331	12.9%
65 - 74	5,783	5.0%	8,465	6.7%	10,946	8.1%
75 - 84	2,751	2.4%	3,201	2.5%	4,242	3.2%
85+	980	0.8%	1,141	0.9%	1,338	1.0%

Race and Ethnicity	Census 2010		2016		2021	
	Number	Percent	Number	Percent	Number	Percent
White Alone	99,885	85.8%	105,676	83.7%	110,130	81.8%
Black Alone	2,623	2.3%	3,191	2.5%	3,652	2.7%
American Indian Alone	1,213	1.0%	1,356	1.1%	1,485	1.1%
Asian Alone	3,902	3.4%	4,834	3.8%	5,684	4.2%
Pacific Islander Alone	655	0.6%	829	0.7%	1,022	0.8%
Some Other Race Alone	2,390	2.1%	3,194	2.5%	4,096	3.0%
Two or More Races	5,807	5.0%	7,197	5.7%	8,575	6.4%
Hispanic Origin (Any Race)	7,386	6.3%	9,875	7.8%	12,648	9.4%

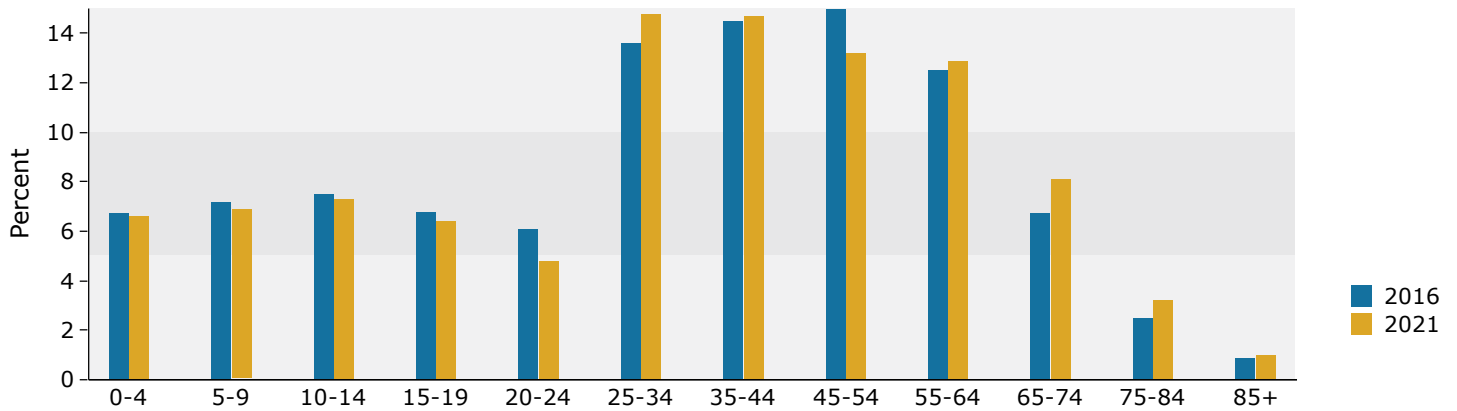
Data Note: Income is expressed in current dollars.

Source: U.S. Census Bureau, Census 2010 Summary File 1. Esri forecasts for 2016 and 2021.

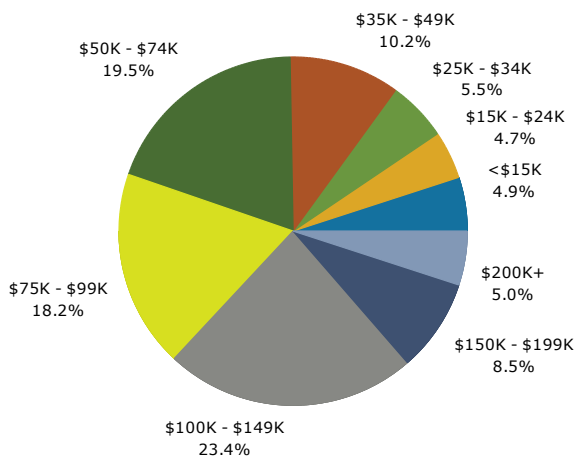
Trends 2016-2021



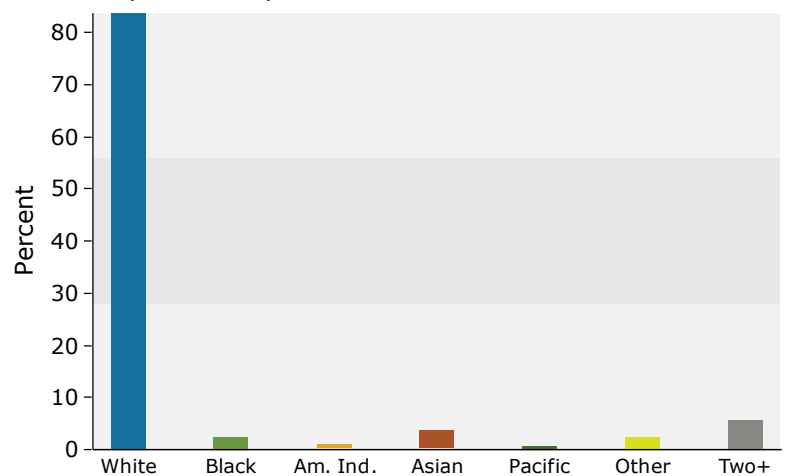
Population by Age



2016 Household Income



2016 Population by Race



2016 Percent Hispanic Origin: 7.8%

Source: U.S. Census Bureau, Census 2010 Summary File 1. Esri forecasts for 2016 and 2021.