

Summary	Census 2010	2016	2021
Population	115,583	123,100	129,591
Households	45,623	48,194	50,546
Families	30,485	32,050	33,539
Average Household Size	2.51	2.53	2.54
Owner Occupied Housing Units	28,359	29,489	30,941
Renter Occupied Housing Units	17,264	18,705	19,605
Median Age	37.2	38.1	38.7
Trends: 2016 - 2021 Annual Rate	Area	State	National
Population	1.03%	1.11%	0.84%
Households	0.96%	1.06%	0.79%
Families	0.91%	1.01%	0.72%
Owner HHs	0.97%	0.99%	0.73%
Median Household Income	2.74%	2.57%	1.89%

Households by Income	2016		2021	
	Number	Percent	Number	Percent
<\$15,000	3,577	7.4%	3,918	7.8%
\$15,000 - \$24,999	3,166	6.6%	2,949	5.8%
\$25,000 - \$34,999	3,902	8.1%	3,578	7.1%
\$35,000 - \$49,999	6,678	13.9%	6,345	12.6%
\$50,000 - \$74,999	9,170	19.0%	7,982	15.8%
\$75,000 - \$99,999	7,067	14.7%	8,166	16.2%
\$100,000 - \$149,999	8,767	18.2%	10,457	20.7%
\$150,000 - \$199,999	3,527	7.3%	4,410	8.7%
\$200,000+	2,340	4.9%	2,740	5.4%
Median Household Income	\$66,487		\$76,119	
Average Household Income	\$84,570		\$92,341	
Per Capita Income	\$33,269		\$36,143	

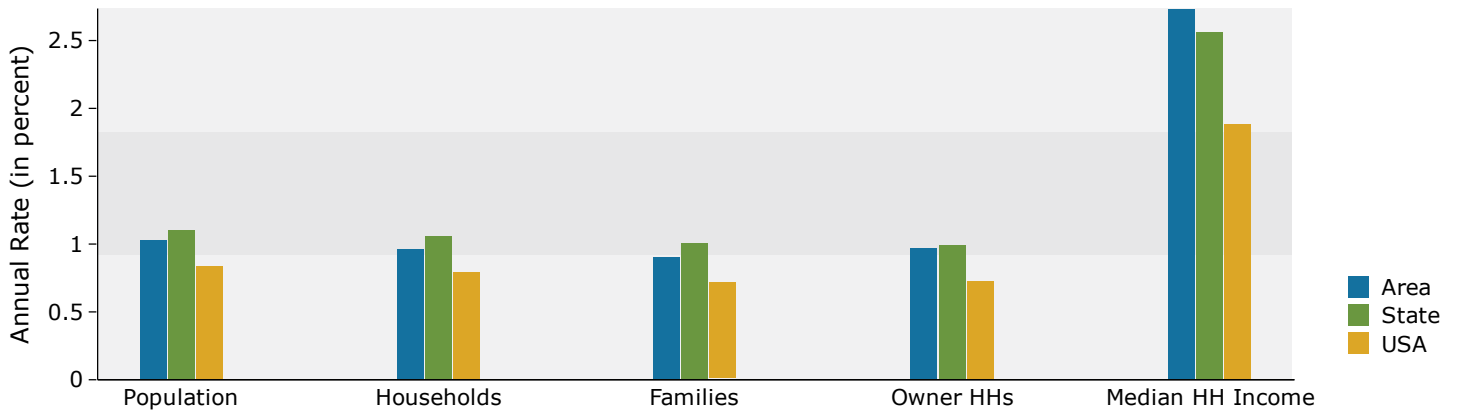
Population by Age	Census 2010		2016		2021	
	Number	Percent	Number	Percent	Number	Percent
0 - 4	7,551	6.5%	7,583	6.2%	7,926	6.1%
5 - 9	7,509	6.5%	7,885	6.4%	7,840	6.0%
10 - 14	7,875	6.8%	7,880	6.4%	8,216	6.3%
15 - 19	7,944	6.9%	7,563	6.1%	7,467	5.8%
20 - 24	7,659	6.6%	7,901	6.4%	7,603	5.9%
25 - 34	15,884	13.7%	17,682	14.4%	18,927	14.6%
35 - 44	16,327	14.1%	16,153	13.1%	17,684	13.6%
45 - 54	18,145	15.7%	17,368	14.1%	16,290	12.6%
55 - 64	13,735	11.9%	16,549	13.4%	17,317	13.4%
65 - 74	7,251	6.3%	10,027	8.1%	12,500	9.6%
75 - 84	4,003	3.5%	4,566	3.7%	5,735	4.4%
85+	1,700	1.5%	1,944	1.6%	2,085	1.6%

Race and Ethnicity	Census 2010		2016		2021	
	Number	Percent	Number	Percent	Number	Percent
White Alone	92,048	79.6%	94,814	77.0%	96,910	74.8%
Black Alone	3,785	3.3%	4,404	3.6%	4,883	3.8%
American Indian Alone	1,625	1.4%	1,756	1.4%	1,858	1.4%
Asian Alone	7,516	6.5%	9,163	7.4%	10,564	8.2%
Pacific Islander Alone	959	0.8%	1,199	1.0%	1,450	1.1%
Some Other Race Alone	3,378	2.9%	4,280	3.5%	5,267	4.1%
Two or More Races	6,271	5.4%	7,483	6.1%	8,658	6.7%
Hispanic Origin (Any Race)	9,216	8.0%	11,758	9.6%	14,520	11.2%

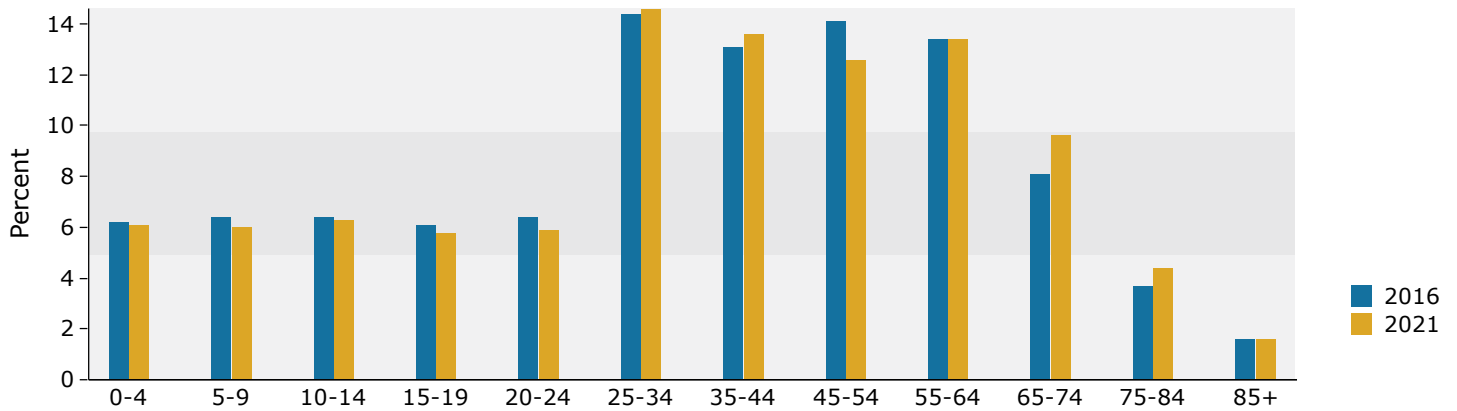
Data Note: Income is expressed in current dollars.

Source: U.S. Census Bureau, Census 2010 Summary File 1. Esri forecasts for 2016 and 2021.

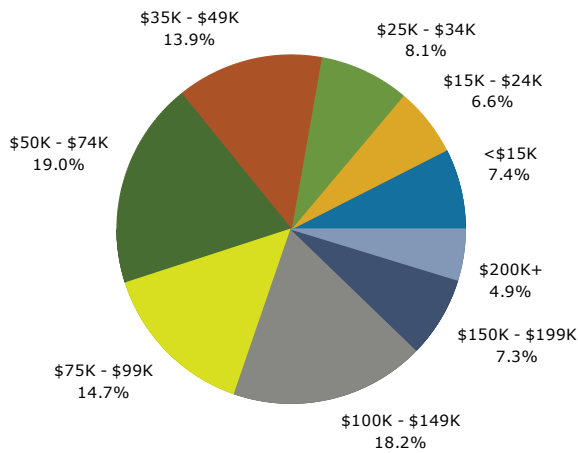
Trends 2016-2021



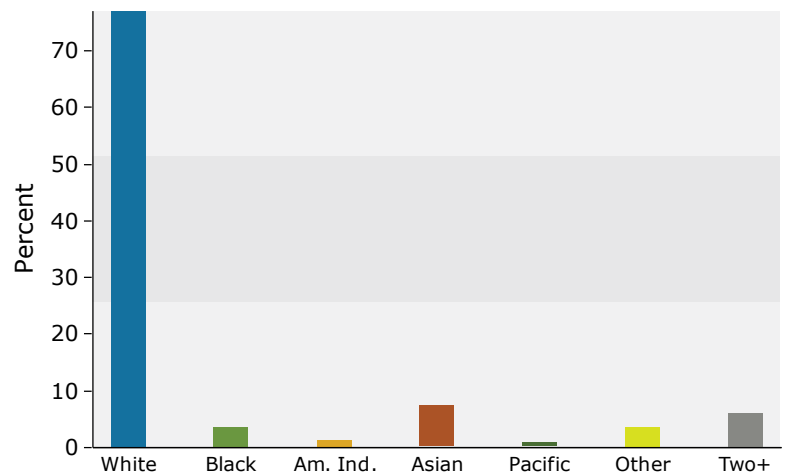
Population by Age



2016 Household Income



2016 Population by Race



2016 Percent Hispanic Origin: 9.6%

Source: U.S. Census Bureau, Census 2010 Summary File 1. Esri forecasts for 2016 and 2021.