

district_6.zip
 Area: 159.12 square miles

Prepared by Aaron Petersen, PALS

Summary	Census 2010	2016	2021
Population	115,858	123,051	128,160
Households	43,343	44,815	46,606
Families	28,077	28,912	30,020
Average Household Size	2.53	2.55	2.56
Owner Occupied Housing Units	19,082	19,130	19,786
Renter Occupied Housing Units	24,261	25,685	26,820
Median Age	30.9	30.9	31.6
Trends: 2016 - 2021 Annual Rate	Area	State	National
Population	0.82%	1.11%	0.84%
Households	0.79%	1.06%	0.79%
Families	0.75%	1.01%	0.72%
Owner HHs	0.68%	0.99%	0.73%
Median Household Income	0.67%	2.57%	1.89%

Households by Income	2016		2021	
	Number	Percent	Number	Percent
<\$15,000	5,886	13.1%	6,649	14.3%
\$15,000 - \$24,999	4,719	10.5%	4,462	9.6%
\$25,000 - \$34,999	5,064	11.3%	4,830	10.4%
\$35,000 - \$49,999	7,349	16.4%	7,370	15.8%
\$50,000 - \$74,999	8,722	19.5%	7,461	16.0%
\$75,000 - \$99,999	5,144	11.5%	6,155	13.2%
\$100,000 - \$149,999	4,533	10.1%	5,533	11.9%
\$150,000 - \$199,999	1,883	4.2%	2,358	5.1%
\$200,000+	1,508	3.4%	1,782	3.8%
Median Household Income	\$48,324		\$49,969	
Average Household Income	\$66,038		\$71,589	
Per Capita Income	\$25,517		\$27,442	

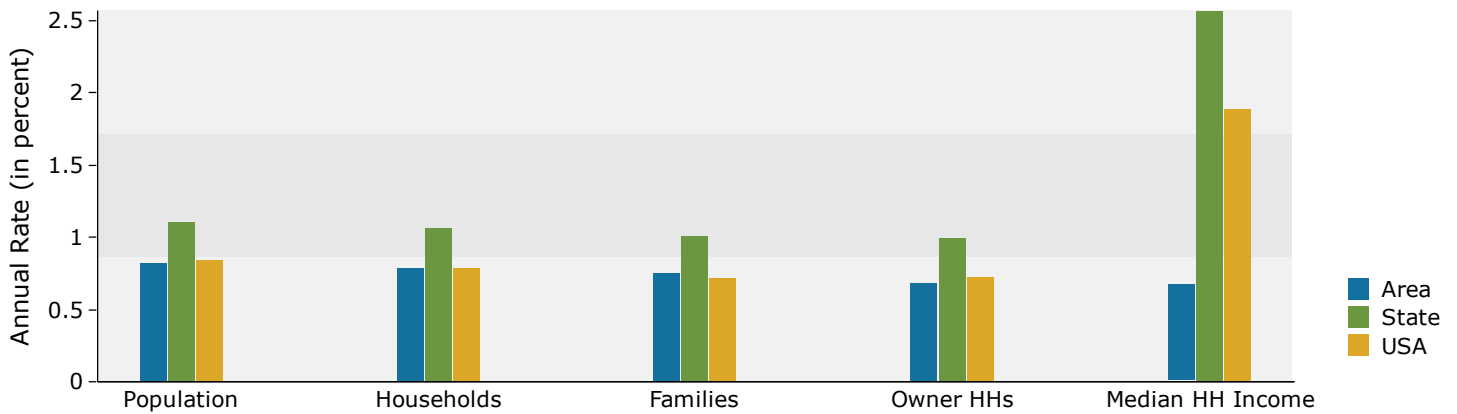
Population by Age	Census 2010		2016		2021	
	Number	Percent	Number	Percent	Number	Percent
0 - 4	10,451	9.0%	10,450	8.5%	10,956	8.5%
5 - 9	8,377	7.2%	8,880	7.2%	9,080	7.1%
10 - 14	7,047	6.1%	7,441	6.0%	7,807	6.1%
15 - 19	7,890	6.8%	7,842	6.4%	8,042	6.3%
20 - 24	12,325	10.6%	13,479	11.0%	13,163	10.3%
25 - 34	18,684	16.1%	21,134	17.2%	22,030	17.2%
35 - 44	13,435	11.6%	13,989	11.4%	15,407	12.0%
45 - 54	13,990	12.1%	12,677	10.3%	11,988	9.4%
55 - 64	11,276	9.7%	12,366	10.0%	12,401	9.7%
65 - 74	6,380	5.5%	8,418	6.8%	10,040	7.8%
75 - 84	4,519	3.9%	4,542	3.7%	5,230	4.1%
85+	1,483	1.3%	1,834	1.5%	2,014	1.6%

Race and Ethnicity	Census 2010		2016		2021	
	Number	Percent	Number	Percent	Number	Percent
White Alone	72,228	62.3%	73,126	59.4%	72,872	56.9%
Black Alone	12,674	10.9%	14,282	11.6%	15,253	11.9%
American Indian Alone	1,460	1.3%	1,541	1.3%	1,587	1.2%
Asian Alone	9,250	8.0%	10,509	8.5%	11,572	9.0%
Pacific Islander Alone	3,012	2.6%	3,491	2.8%	3,983	3.1%
Some Other Race Alone	7,099	6.1%	8,472	6.9%	9,897	7.7%
Two or More Races	10,135	8.7%	11,630	9.5%	12,997	10.1%
Hispanic Origin (Any Race)	16,480	14.2%	20,133	16.4%	23,697	18.5%

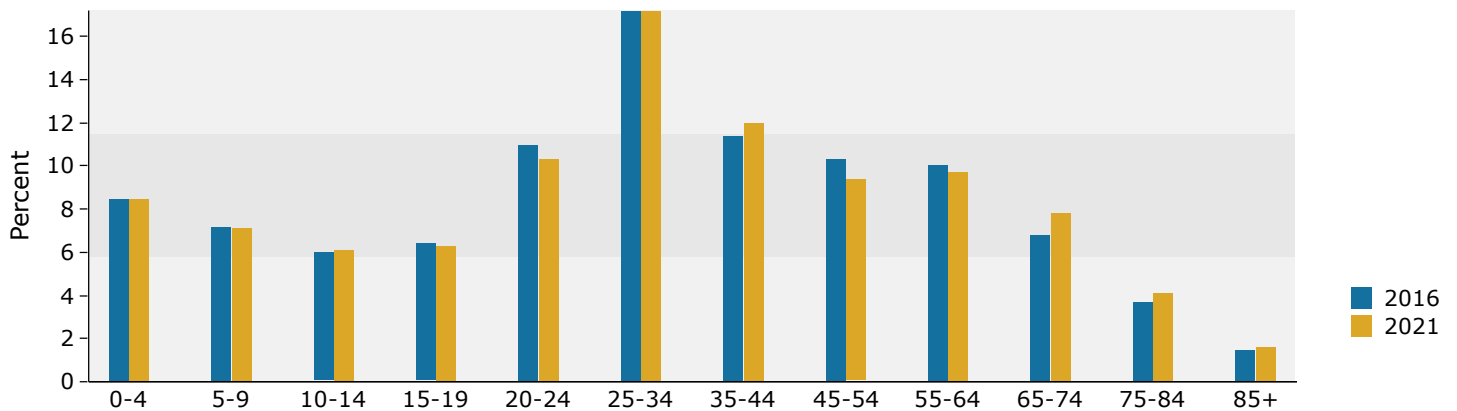
Data Note: Income is expressed in current dollars.

Source: U.S. Census Bureau, Census 2010 Summary File 1. Esri forecasts for 2016 and 2021.

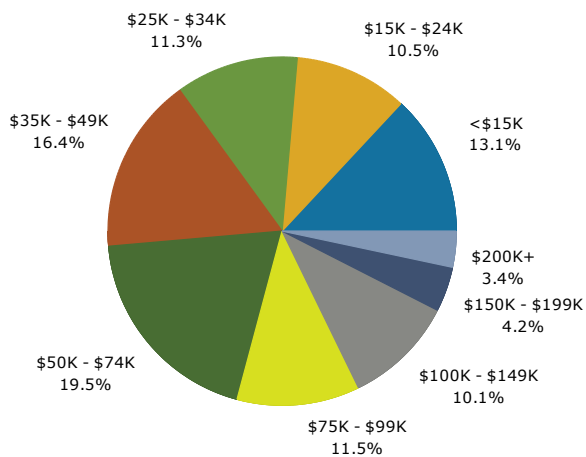
Trends 2016-2021



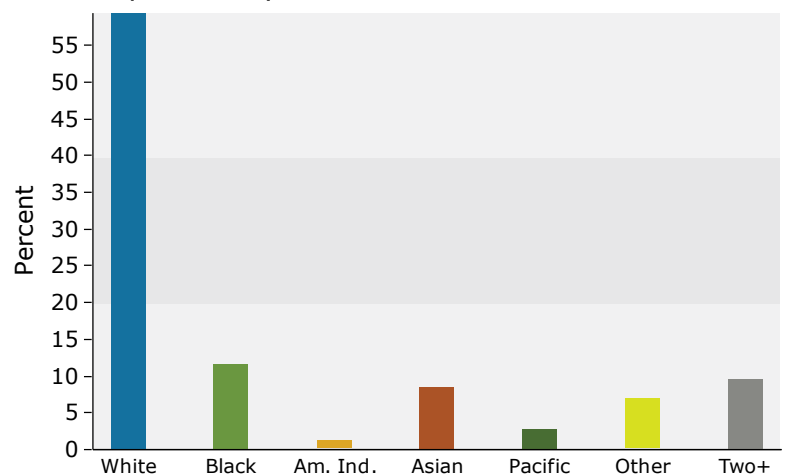
Population by Age



2016 Household Income



2016 Population by Race



2016 Percent Hispanic Origin: 16.4%

Source: U.S. Census Bureau, Census 2010 Summary File 1. Esri forecasts for 2016 and 2021.