

**Pierce County, Washington
Provisional / Sample Ballot
April 24, 2018**

Instructions

How to vote

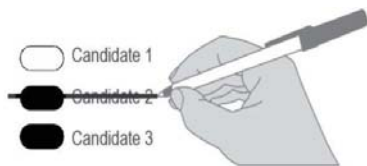


Use a pen to completely fill in the oval to the left of your choice.

Vote for one in each contest.

If you vote for more than one choice, your vote will not count for that race or measure.

How to correct a vote



To make a correction, draw a line through the entire incorrect choice. You may make another choice.

Assistance & information

Visit: PierceCountyElections.org

To request a replacement ballot ask a worker.

Who donates to campaigns?

For a list of the people and organizations that donated to state and local candidates and ballot measure campaigns, visit www.pdc.wa.gov

Town of South Prairie

Special Election - Proposition No. 1

Emergency Medical Services Property Tax Levy

Shall the Town of South Prairie be authorized to impose a PERMANENT regular property tax levy of fifty (50¢) or less per thousand dollars (\$1,000.00) of assessed valuation to provide basic and advanced emergency medical care and services?

- Yes
- No

Peninsula School District No. 401

Special Election - Proposition No. 1

General Obligation Bonds - \$220,000,000

The Board of Directors of Peninsula School District No. 401 adopted Resolution No. 18-01 concerning a proposition to finance capital improvements. If approved, Proposition No. 1 will fund new construction, repairs and renovations, student safety and other upgrades to designated schools and facilities throughout the District, and will authorize the District to issue \$220,000,000 of general obligation bonds over multiple years, each series maturing within a maximum of 20 years, and to levy excess property taxes annually to repay such bonds, all as provided in Resolution No. 18-01. Should Proposition No. 1 be:

- Approved
- Rejected