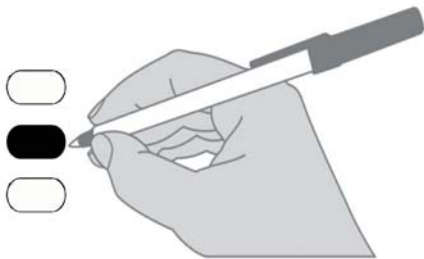


Pierce County, Washington
Provisional / Sample Ballot
August 7, 2018

Instructions

How to vote

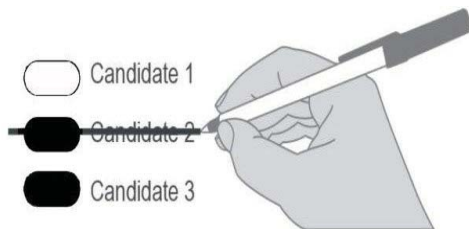


Use a pen to completely fill in the oval to the left of your choice.

Vote for one in each contest.

If you vote for more than one choice, your vote will not count for that race or measure.

How to correct a vote



To make a correction, draw a line through the entire incorrect choice. You may make another choice.

Optional write-in

To vote for a write-in candidate, fill in the oval next to the write-in line and print the name.

Assistance & information

Visit: PierceCountyElections.org

To request a replacement ballot call 253-798-VOTE (8683).

Who donates to campaigns?

For a list of the people and organizations that donated to state and local candidates and ballot measure campaigns, visit www.pdc.wa.gov

Partisan Office Information

READ: Each candidate for partisan office may state a political party that he or she prefers. A candidate's preference does not imply that the candidate is nominated or endorsed by the party, or that the party approves of or associates with that candidate.

Federal - Partisan Offices

U.S. Senator

- Thor Amundson
(Prefers Independent Party)
- Dave Strider
(Prefers Independent Party)
- Joey Gibson
(Prefers Republican Party)
- Mike Luke
(Prefers Libertarian Party)
- GoodSpaceGuy
(Prefers Republican Party)
- Clint R. Tannehill
(Prefers Democratic Party)
- Maria Cantwell
(Prefers Democratic Party)
- Susan Hutchison
(Prefers Republican Party)
- Brad Chase
(Prefers FDFR Party)
- Tim Owen
(Prefers Republican Party)
- Matthew D. Heines
(Prefers Republican Party)
- Sam Wright
(Prefers The Human Rights Party)
- Art Coday
(Prefers Republican Party)
- John Orlinski
(Prefers Republican Party)
- Charlie R Jackson
(Prefers Independent Party)
- Keith Swank
(Prefers Republican Party)
- Alex Tsimerman
(Prefers StandupAmerica Party)
- RC Smith
(Prefers Republican Party)
- Don L. Rivers
(Prefers Democratic Party)
- Jennifer Gigi Ferguson
(Prefers Independent Party)
- Steve Hoffman
(Prefers Freedom Socialist Party)
- George H. Kalberer
(Prefers Democratic Party)
- James Robert "Jimmie" Deal
(Prefers Green Party)
- Roque "Rocky" De La Fuente
(Prefers Republican Party)
- Jon Butler
(Prefers Independent Party)
- Dave Bryant
(Prefers Republican Party)
- Mohammad Said
(Prefers Democratic Party)
- Matt Hawkins
(Prefers Republican Party)
- Glen R Stockwell
(Prefers Republican Party)
- Or Write-In

U.S. Rep. 6th Congressional

- Tyler Myles Vega
(Prefers Progressive Party)
- Douglas Dightman
(Prefers Republican Party)
- Derek Kilmer
(Prefers Democratic Party)
- Or Write-In

U.S. Rep. 8th Congressional

- Dino Rossi
(Prefers GOP Party)
- Jason Rittereriser
(Prefers Democratic Party)
- Keith Arnold
(Prefers Independent)(No Party)*
- Bill Grassie
(Prefers Indep. Centrist Party)
- Kim Schrier
(Prefers Democratic Party)
- Todd Mahaffey
(States No Party Preference)
- Jack Hughes-Hageman
(Prefers The Republican Party)
- Shannon Hader
(Prefers Democratic Party)
- Tom Cramer
(Prefers Democratic Party)
- Gordon Allen Pross
(Prefers Republican Party)
- Patrick Dillon
(Prefers Neither Major Party)
- Richard Travis Reyes
(Prefers Libertarian Party)
- Or Write-In

U.S. Rep. 9th Congressional

- Doug Basler
(Prefers Republican Party)
- Sarah Smith
(Prefers Democratic Party)
- Adam Smith
(Prefers Democratic Party)
- Or Write-In

U.S. Rep. 10th Congressional

- Nancy Dailey Slotnick
(Prefers Indep. Centrist Party)
- Tamborine Borrelli
(Prefers Ind. Progressive Party)
- Joseph Brumbles
(Prefers Republican Party)
- Denny Heck
(Prefers Democratic Party)
- Or Write-In

State - Partisan Offices

2nd Legislative District

State Representative, Pos. 1

- Anneliese Feld
(Prefers Democratic Party)
- Andrew Barkis
(Prefers Republican Party)
- Or Write-In

State Representative, Pos. 2

- JT Wilcox
(Prefers Republican Party)
- Or Write-In

25th Legislative District

State Representative Pos. 1

- Jamie Smith
(Prefers Democratic Party)
- Julie L. Door
(Prefers Democratic Party)
- Emmett Smith
(Prefers Republican Party)
- Kelly Chambers
(Prefers Republican Party)
- Or Write-In

State Representative Pos. 2

- Chris Gildon
(Prefers Republican Party)
- Brian Duthie
(Prefers Democratic Party)
- Ned Witting
(Prefers Independent To Party)
- Or Write-In

26th Legislative District

State Senator

- Marty McClendon
(Prefers Republican Party)
- Bill Scheidler
(Prefers Independent Party)
- Emily Randall
(Prefers Democratic Party)
- Or Write-In

State Representative Pos. 1

- Jesse L. Young
(Prefers Republican Party)
- Connie FitzPatrick
(Prefers Democratic Party)
- Naomi Evans
(Prefers Republican Party)
- Or Write-In

State Representative Pos. 2

- Marco Padilla
(Prefers People Over Party)
- Randy Boss
(Prefers Republican Party)
- Joy Stanford
(Prefers Democratic Party)
- Michelle Caldier
(Prefers Republican Party)
- Or Write-In

State - Partisan Offices

27th Legislative District

State Representative Pos. 1

- Kyle Paskewitz
(Prefers Republican Party)
- Laurie Jinkins
(Prefers Democratic Party)
- _____
Or Write-In

State Representative Pos. 2

- Donald Golden
(Prefers Independent Party)
- Jake Fey
(Prefers Democratic Party)
- _____
Or Write-In

28th Legislative District

State Representative Pos. 1

- Richard (Dick) Muri
(Prefers Republican Party)
- Mari Leavitt
(Prefers Democratic Party)
- _____
Or Write-In

State Representative Pos. 2

- Maia Espinoza
(Prefers Republican Party)
- Christine Kilduff
(Prefers Democratic Party)
- _____
Or Write-In

29th Legislative District

State Senator

- Pierre Malebranche
(Prefers Independent Party)
- Steve Conway
(Prefers Democratic Party)
- _____
Or Write-In

State Representative Pos. 1

- Terry Harder
(Prefers Republican Party)
- David Sawyer
(Prefers Democratic Party)
- Janis Clark
(Prefers Republican Party)
- Melanie Morgan
(Prefers Democratic Party)
- _____
Or Write-In

State Representative Pos. 2

- Steve Kirby
(Prefers Democratic Party)
- _____
Or Write-In

30th Legislative District

State Senator

- Tirzah Idahosa
(Prefers Democratic Party)
- Mark Miloscia
(Prefers Republican Party)
- Claire Wilson
(Prefers Democratic Party)
- _____
Or Write-In

State - Partisan Offices

30th Legislative District

State Representative Pos. 1

- Linda Kochmar
(Prefers GOP Party)
- Mike Pellicciotti
(Prefers Democratic Party)
- _____
Or Write-In

State Representative Pos. 2

- Mark Greene
(Prefers G.O.P. Party)
- Kristine M. Reeves
(Prefers Democratic Party)
- _____
Or Write-In

31st Legislative District

State Senator

- Immaculate Ferreria
(Prefers Democratic Party)
- Jeff Benson
(States No Party Preference)
- Phil Fortunato
(Prefers Republican Party)
- _____
Or Write-In

State Representative Pos. 1

- Victoria Mena
(Prefers Democratic Party)
- Drew Stokesbary
(Prefers Republican Party)
- _____
Or Write-In

State Representative Pos. 2

- Steve Skutt
(States No Party Preference)
- Mark Boswell
(Prefers Democratic Party)
- Morgan Irwin
(Prefers Republican Party)
- _____
Or Write-In

Pierce County - Partisan Offices

Prosecuting Attorney

- Mark Lindquist
(Prefers Democratic Party)
- Mary Robnett
(Prefers Non-Partisan Party)
- _____
Or Write-In

County Council District No. 1

- Sharon Hanek
(Prefers Republican Party)
- Milton (Milt) Tremblay
(Prefers Republican Party)
- Lorra Jackson
(Prefers Democratic Party)
- Dave Morell
(Prefers Republican Party)
- _____
Or Write-In

Pierce County - Partisan Offices

County Council District No. 5

- Justin Van Dyk
(Prefers Republican Party)
- Marty Campbell
(Prefers Democratic Party)
- Suzanne Skaar
(Prefers Democratic Party)
- _____
Or Write-In

County Council District No. 7

- David Olson
(Prefers Republican Party)
- Derek M. Young
(Prefers Democratic Party)
- _____
Or Write-In

District Court - Nonpartisan Office

Position No. 6

- Karl Williams
- John Sheeran
- Matthew F. Wareham
- _____
Or Write-In

Fire Protection District No. 18 (Orting Valley Fire & Rescue)

Special Election - Proposition No. 1

Six-Year Levy Lid Lift - Fire Protection Services

The Board of Fire Commissioners of Pierce County Fire Protection District No. 18 (Orting Valley Fire & Rescue) adopted Resolution 2018-002 proposing to increase the District's regular property tax levy. If approved, Proposition No. 1 will authorize the District to restore the previously voter-approved rate of \$1.50 per \$1,000 of assessed valuation for fire protection and emergency medical services, allow annual increases of up to 6% (not to exceed the \$1.50 rate) for each of the succeeding five years, and use the 2023 levy dollar amount to compute the limitation for subsequent levies; all as provided in Resolution 2018-002. Should Proposition No. 1 be:

- Approved
- Rejected

**Fire Protection District No. 18
(Orting Valley Fire & Rescue)**

Special Election - Proposition No. 2

Six-Year Levy Lid Lift - Fire Protection Services

The Board of Fire Commissioners of Pierce County Fire Protection District No. 18 (Orting Valley Fire & Rescue) adopted Resolution 2018-003 proposing to increase the District's regular property tax levy. If approved, Proposition No. 2 will authorize the District to restore the previously voter-approved rate of \$0.50 per \$1,000 of assessed valuation for fire protection and emergency medical services, allow annual increases of up to 6% (not to exceed the \$0.50 rate) for each of the succeeding five years, and use the 2023 levy dollar amount to compute the limitation for subsequent levies; all as provided in Resolution 2018-003. Should Proposition No. 2 be:

- Approved
- Rejected

Precinct Committee Officer

For this office only: In order to vote for precinct committee officer, a partisan office, you must affirm that you are a Democrat or a Republican and may vote only for one candidate from the party you select. Your vote for a candidate affirms your affiliation with the same party as the candidate. This preference is private and will not be matched to your name or shared.

PRECINCT 02-114

- Barbara Ford - Dem
I affirm I am a Democrat
- Debra L. Hartmann - Dem
I affirm I am a Democrat

PRECINCT 02-141

- Adam Rosenlund - Rep
I affirm I am a Republican
- JoAnn Acord - Rep
I affirm I am a Republican

PRECINCT 02-148

- Richard Halvorson - Rep
I affirm I am a Republican
- Patrick Campion - Rep
I affirm I am a Republican

PRECINCT 02-164

- Jim McCune - Rep
I affirm I am a Republican
- Gina Blanchard-Reed - Rep
I affirm I am a Republican

PRECINCT 25-206

- Turan Kayaoglu - Dem
I affirm I am a Democrat
- Lauren Adler - Dem
I affirm I am a Democrat

PRECINCT 25-217

- Mark Camacho - Dem
I affirm I am a Democrat
- Karri Wicka - Dem
I affirm I am a Democrat

PRECINCT 25-256

- Charles (Charlie) Scott Som Haskins - Dem
I affirm I am a Democrat
- Mark Goodwin - Dem
I affirm I am a Democrat

PRECINCT 25-267

- Bob Klavano - Dem
I affirm I am a Democrat
- Joseph Colombo - Dem
I affirm I am a Democrat

PRECINCT 25-271

- Caleb Heimlich - Rep
I affirm I am a Republican
- Jesse Lyon - Rep
I affirm I am a Republican

PRECINCT 26-303

- John Skansi - Rep
I affirm I am a Republican
- Eric Minor - Rep
I affirm I am a Republican

PRECINCT 26-318

- Glenn Anderson - Dem
I affirm I am a Democrat
- Edward Robison - Dem
I affirm I am a Democrat

PRECINCT 26-321

- Don Swensen - Dem
I affirm I am a Democrat
- Kathleen Tei - Dem
I affirm I am a Democrat

PRECINCT 26-336

- Marty McClendon - Rep
I affirm I am a Republican
- Kristin M. Grose - Rep
I affirm I am a Republican

PRECINCT 26-350

- David Jones - Dem
I affirm I am a Democrat
- John W. Jolibois - Dem
I affirm I am a Democrat

PRECINCT 27-410

- Jeannine C. Mitchell - Dem
I affirm I am a Democrat
- Nichole Crockett - Dem
I affirm I am a Democrat

PRECINCT 27-420

- Earl V. (Van) Perdue, II - Dem
I affirm I am a Democrat
- Janet Thiessen - Dem
I affirm I am a Democrat

PRECINCT 27-421

- Will Menta - Dem
I affirm I am a Democrat
- Hayley Rea Sherman - Dem
I affirm I am a Democrat

PRECINCT 27-422

- Dale Christensen - Dem
I affirm I am a Democrat
- Douglas H. Galuszka - Dem
I affirm I am a Democrat

PRECINCT 27-424

- Jeremy Stubbs - Dem
I affirm I am a Democrat
- James H. Williams - Dem
I affirm I am a Democrat

PRECINCT 27-428

- Anita Latch - Dem
I affirm I am a Democrat
- Timothy M. Farrell - Dem
I affirm I am a Democrat

PRECINCT 27-429

- Kyle Jolibois - Dem
I affirm I am a Democrat
- Phil Gardner - Dem
I affirm I am a Democrat

PRECINCT 27-439

- Chris Karnes - Dem
I affirm I am a Democrat
- Tom McCarthy - Dem
I affirm I am a Democrat

PRECINCT 27-441

- Jessica Gavre - Dem
I affirm I am a Democrat
- Laura Fielding - Dem
I affirm I am a Democrat

PRECINCT 27-442

- Austin Hayes - Dem
I affirm I am a Democrat
- Derek Zable - Dem
I affirm I am a Democrat

PRECINCT 27-445

- James C. Wrenn - Dem
I affirm I am a Democrat
- Josh Cole - Dem
I affirm I am a Democrat

PRECINCT 27-454

- Traci Kelly - Dem
I affirm I am a Democrat
- Desiree Rollins - Dem
I affirm I am a Democrat
- Lillian Ferraz - Dem
I affirm I am a Democrat

PRECINCT 27-462

- Twylia Westling - Dem
I affirm I am a Democrat
- Sarah Rumbaugh - Dem
I affirm I am a Democrat

PRECINCT 27-472

- Ian Brown - Dem
I affirm I am a Democrat
- Maralise Hood Quan - Dem
I affirm I am a Democrat

PRECINCT 28-562

- Brittany Walley - Dem
I affirm I am a Democrat
- Steven Schneider - Dem
I affirm I am a Democrat

PRECINCT 28-572

- Joel Green - Rep
I affirm I am a Republican
- Patrick D. Plumb - Rep
I affirm I am a Republican

Precinct Committee Officer

For this office only: In order to vote for precinct committee officer, a partisan office, you must affirm that you are a Democrat or a Republican and may vote only for one candidate from the party you select. Your vote for a candidate affirms your affiliation with the same party as the candidate. This preference is private and will not be matched to your name or shared.

PRECINCT 28-586

- Taira Leasia-Nevill - Dem
I affirm I am a Democrat
- Robert Mckercher, Jr. - Dem
I affirm I am a Democrat

PRECINCT 29-601

- Colleen J. Power - Dem
I affirm I am a Democrat
- Katie Dean - Dem
I affirm I am a Democrat

PRECINCT 29-603

- David Sawyer - Dem
I affirm I am a Democrat
- Mitchel Huber - Dem
I affirm I am a Democrat

PRECINCT 29-614

- Nikie Walters - Dem
I affirm I am a Democrat
- Bonny Jo Peterson - Dem
I affirm I am a Democrat

PRECINCT 29-654

- Robert Wardell - Dem
I affirm I am a Democrat
- Jordan Waits - Dem
I affirm I am a Democrat

PRECINCT 29-655

- Roxy Giddings - Dem
I affirm I am a Democrat
- Joshua Van Dyk - Dem
I affirm I am a Democrat

PRECINCT 29-660

- Barbara Ollmann - Dem
I affirm I am a Democrat
- Melissa Gill - Dem
I affirm I am a Democrat

PRECINCT 31-809

- Renee Rich - Dem
I affirm I am a Democrat
- Tyler Rasmussen - Dem
I affirm I am a Democrat