

**PIERCE COUNTY CALL FOR BID NO. 2118,  
PIERCE COUNTY ANNEX BUILDING TENANT IMPROVEMENT PROJECT  
ADDENDUM NO. 04**

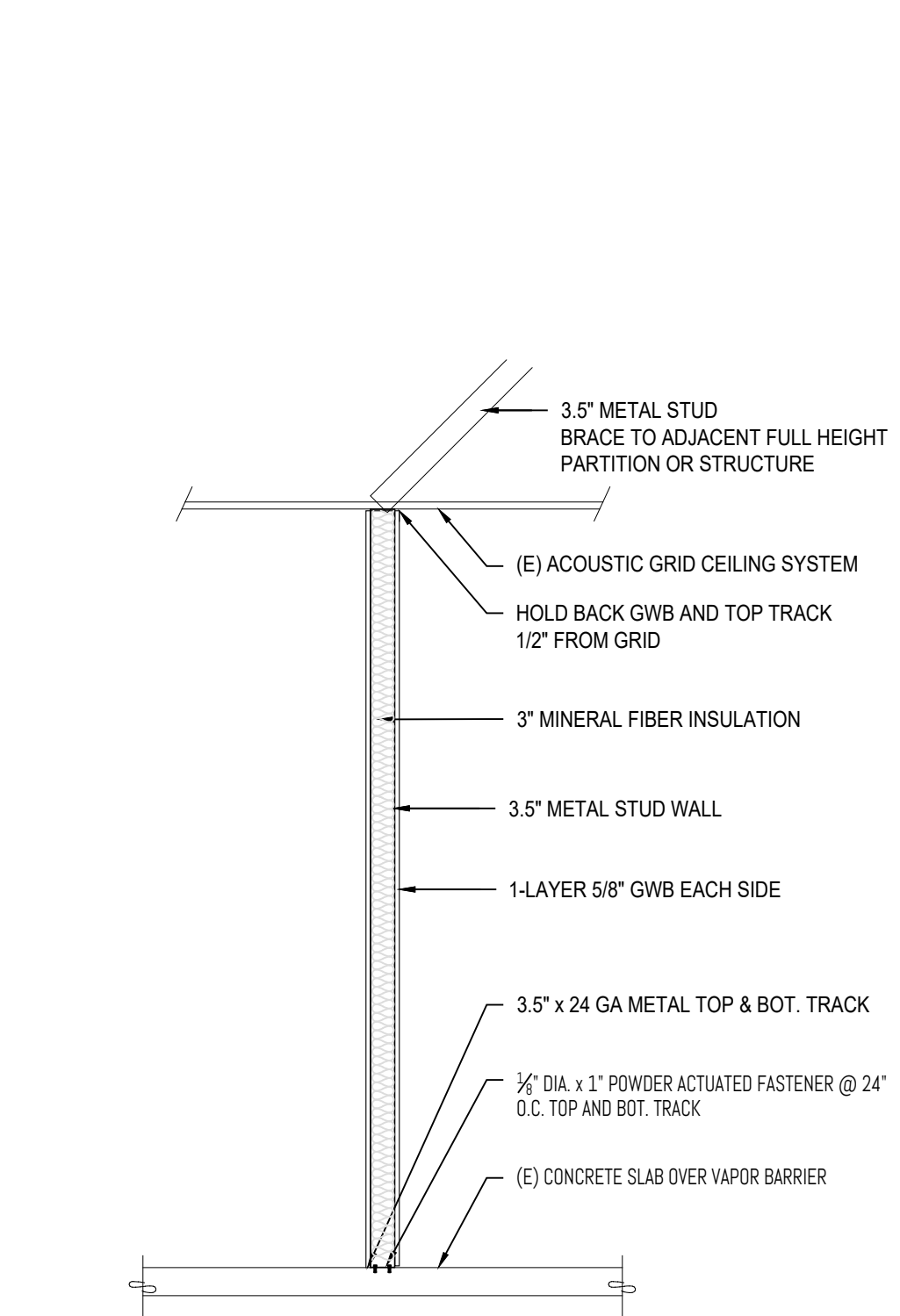
**TO ALL BIDDERS:** Attention is called to the following items which shall be added to, deleted from, or revised from the BIDDING DOCUMENTS for Pierce County Bid #2118, thereby incorporating the addendum as part of the CONTRACT DOCUMENT.

#	CHANGES TO PREVIOUS ADDENDA:	
1	<p><u>Per Addendum #3 / Attachment A - Questions and Answer:</u> 1. Page 3, item #4 indicated that a “note has been added to sheet E0.1”. I did not see a revised E0.1 issued.</p>	<p>This should have read: note has been added to <b><u>Sheet ED-1.0'</u></b></p>
2	<p><u>Per Addendum #3 / Attachment A - Questions and Answer:</u> 2. Page 8, item #41 indicated that “sheet A3.1 is being reissued”. I did not see a revised sheet A3.1.</p>	<p>This sheet was inadvertently left out of the previous addendum. A3.1 is attached to this Addendum No. 04</p>
3	<p>Floor Plan Keynote 1 on sheet A2.1 refers to replacing the development counter per B1/A3.1. There is no elevation B1 shown on sheet A3.1</p>	<p>Submit bids with currently available bid documents.</p>
4	<p>I was reviewing the door schedule on sheet A 3.1. 1. All of the hardware groups do not show up on this sheet. Please advise. 2. There are a number of openings that show a wood door and existing HM frame. Is the intent here that we’re removing doors and hardware and installing back into and existing HM jamb?</p>	<p>Submit bids with currently available bid documents.</p>
5	<p>Please accept for consideration the attached Substitution Request for the subject project.</p>	<p>Submit bids with currently available information, similar (equal) products may be considered during construction by the successful bidder.</p>
6	<p>Question 23 regarding the environmental graphic should have read what is it and what is the quantity? The response does not reveal a description of the said graphic. Is there something to refer to it’s design?</p>	<p>Submit bids with currently available bid documents.</p>
7	<p>See substitution request for the lockers.</p>	<p>Submit bids with currently available information, similar (equal) products may be considered during construction by the successful bidder.</p>

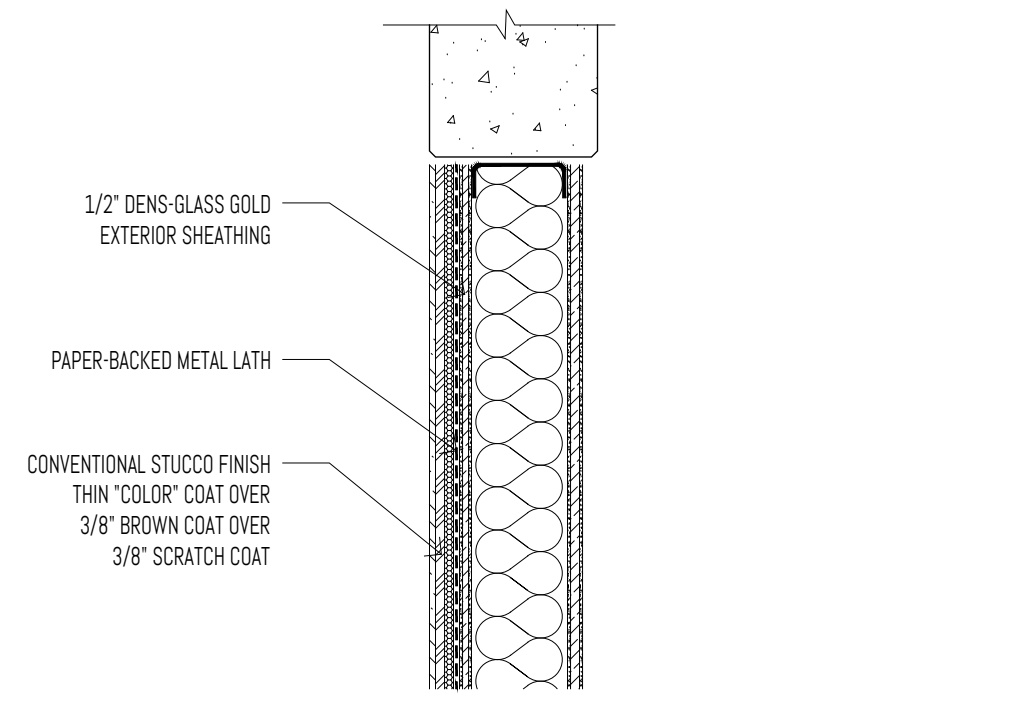
**END OF ADDENDUM**

**PLEASE INDICATE YOUR RECEIPT OF THIS ADDENDUM BY INDICATING ON THE BID FORM**

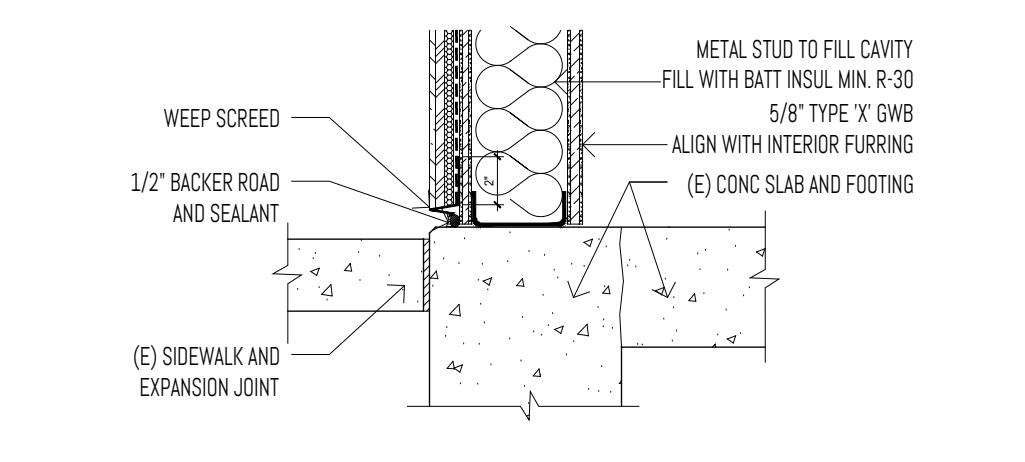
**ATTACHMENT A - REVISED SHEET A3.1**



**A WALL TYPE A - PARTIAL HEIGHT PARTITION**  
1/2" = 1'-0"



**B2 WALL TYPE B - INFILL WALL HEAD/JAMB**  
1 1/2" = 1'-0"

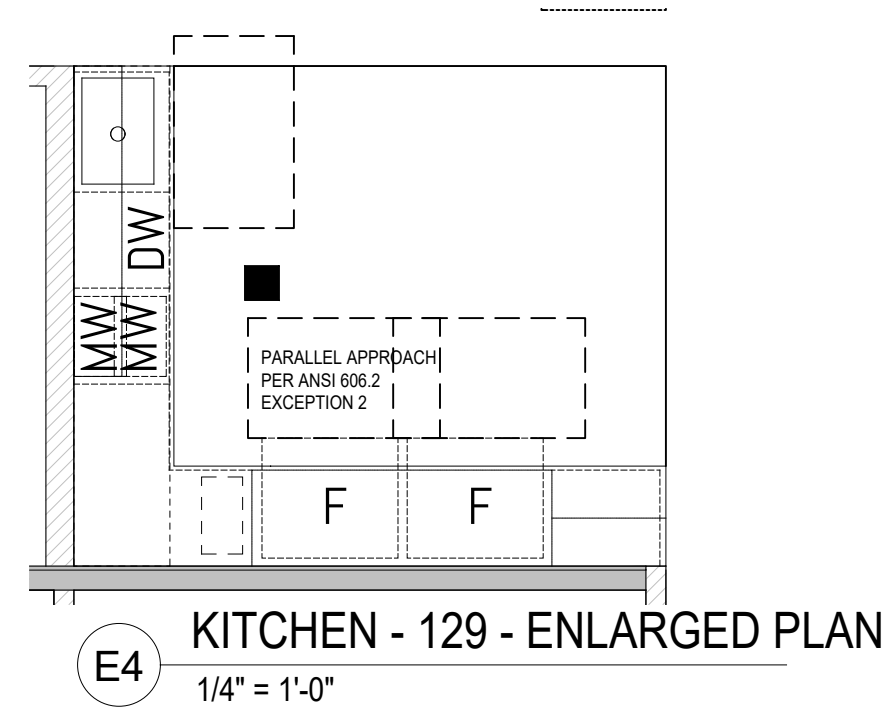


**B1 WALL TYPE B - INFILL WALL SILL**  
1 1/2" = 1'-0"

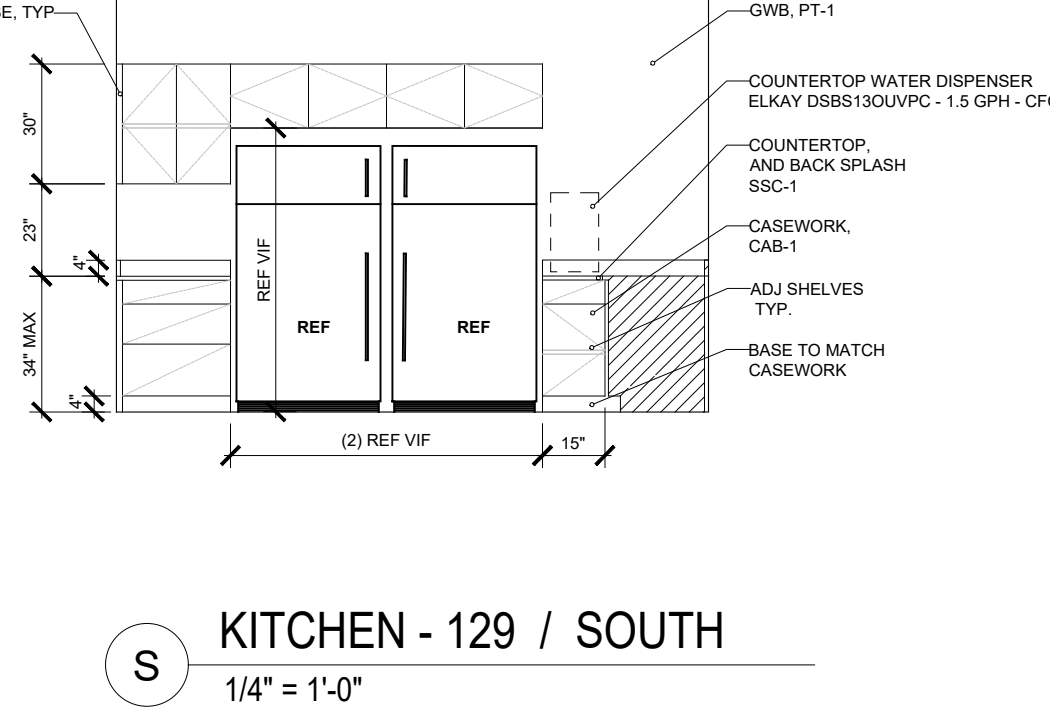
**CASEWORK FINISHES**

REFERENCE BRAND	STYLE	COLOR
PT-1 SHERWIN WILLIAMS	NEBULOUS WHITE	SW 7653
PT-2 SHERWIN WILLIAMS	STAMPED CONCRETE	SW 7655
PT-3 SHERWIN WILLIAMS	SHERWIN WILLIAMS	SW
PT-4 SHERWIN WILLIAMS	SHERWIN WILLIAMS	SW
SSC-1 PENTAL QUARTZ	VENATINO	BQ8440P
CAB-1 LANZ CABINETS	TFL DESIGNER	OBSIDIAN

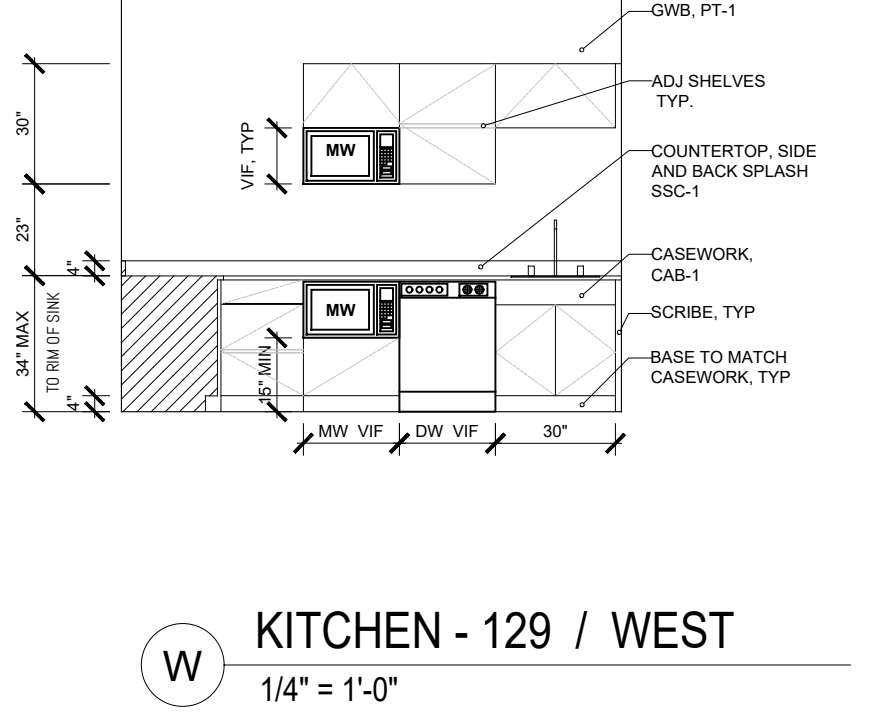
**D3 KITCHEN - 107 / ENLARGED PLAN**  
1/4" = 1'-0"



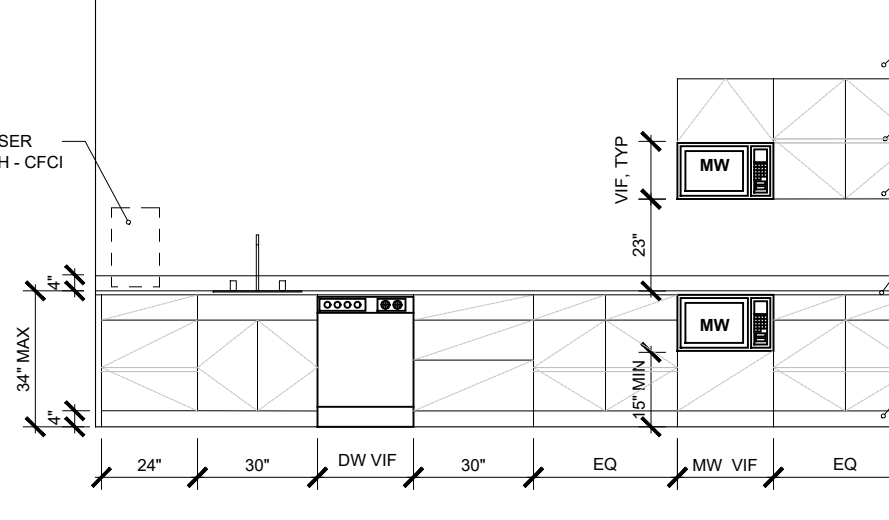
**E4 KITCHEN - 129 - ENLARGED PLAN**  
1/4" = 1'-0"



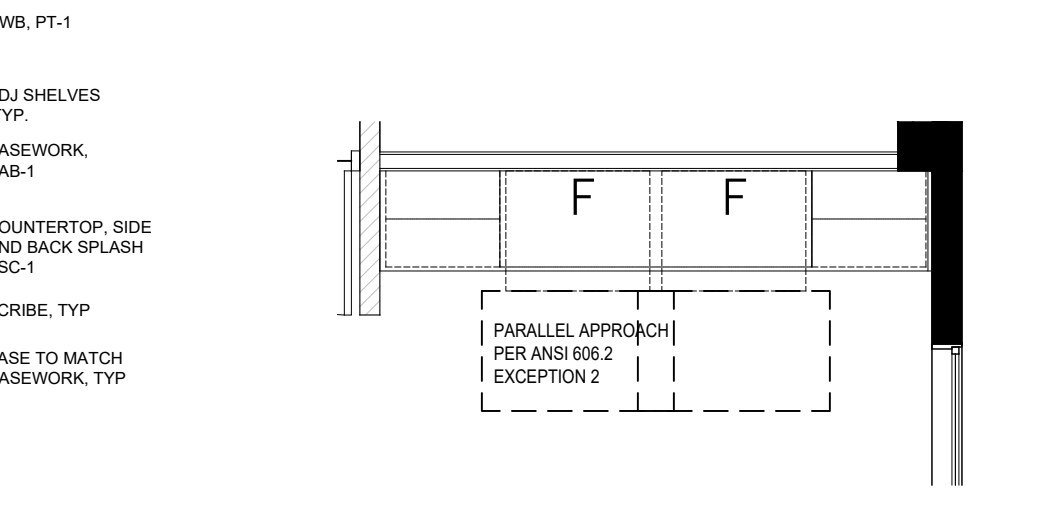
**S KITCHEN - 129 / SOUTH**  
1/4" = 1'-0"



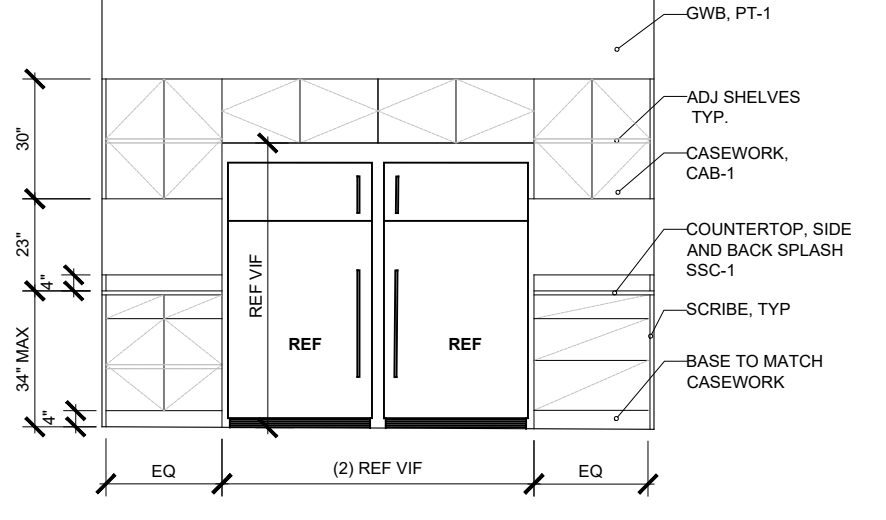
**W KITCHEN - 129 / WEST**  
1/4" = 1'-0"



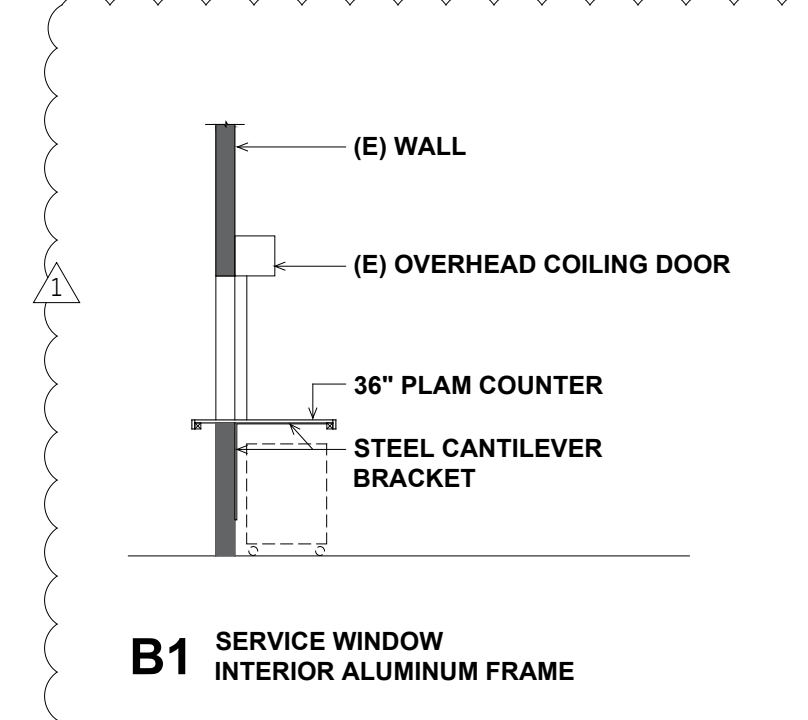
**N KITCHEN - 107 / NORTH**  
1/4" = 1'-0"



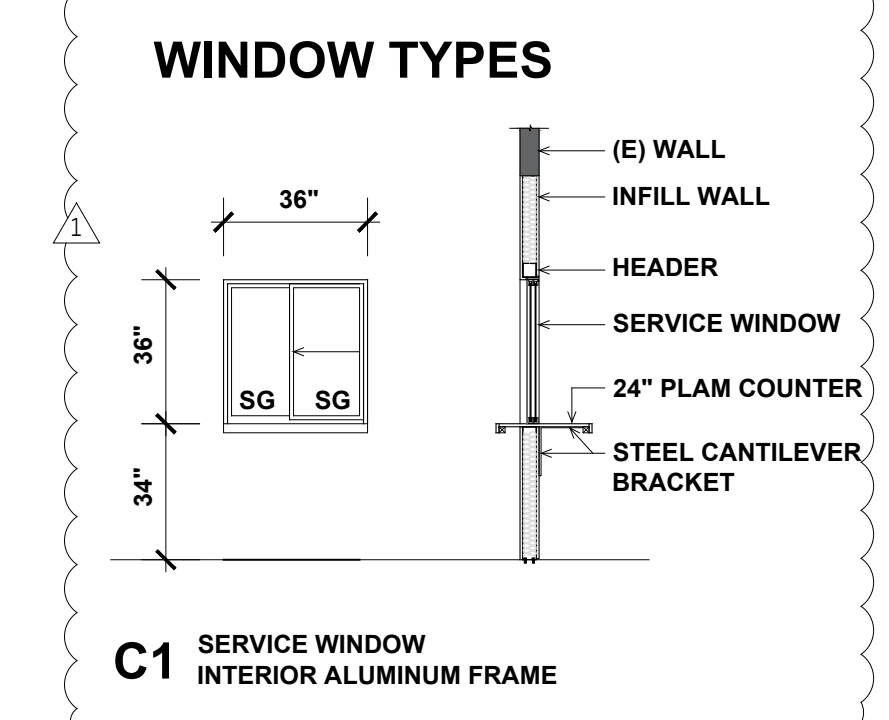
**D5 BREAK ROOM - 106 / ENLARGED PLAN**  
1/4" = 1'-0"



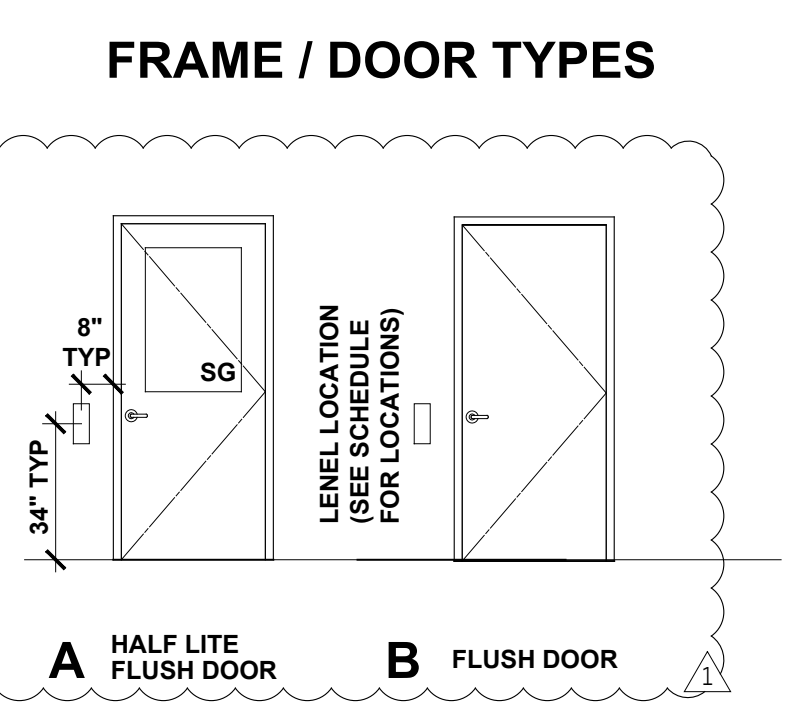
**N BREAK ROOM - 106 / NORTH**  
1/4" = 1'-0"



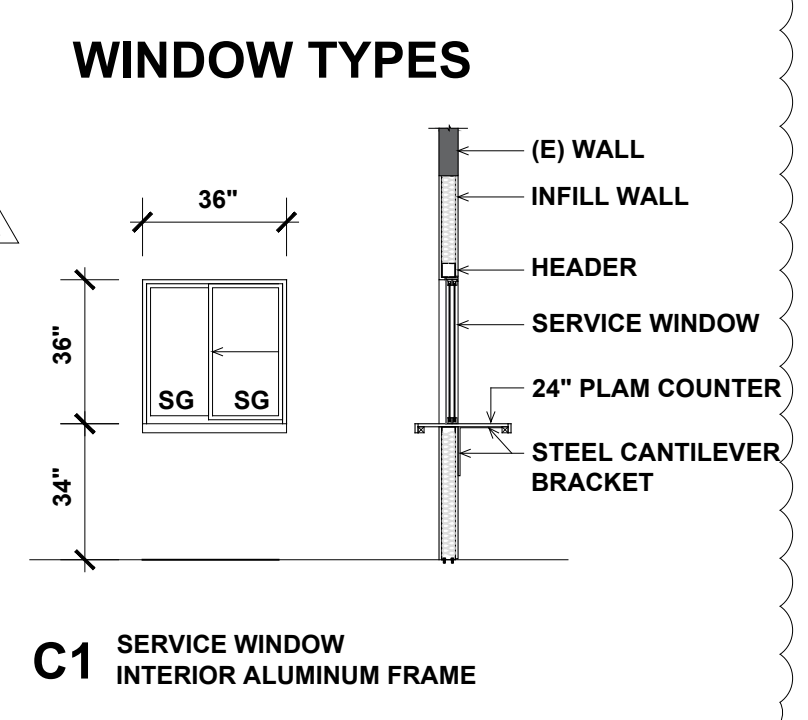
**B1 SERVICE WINDOW INTERIOR ALUMINUM FRAME**



**C1 SERVICE WINDOW INTERIOR ALUMINUM FRAME**



**A HALF LITE FLUSH DOOR B FLUSH DOOR**



**WINDOW TYPES**

**DOOR SCHEDULE**

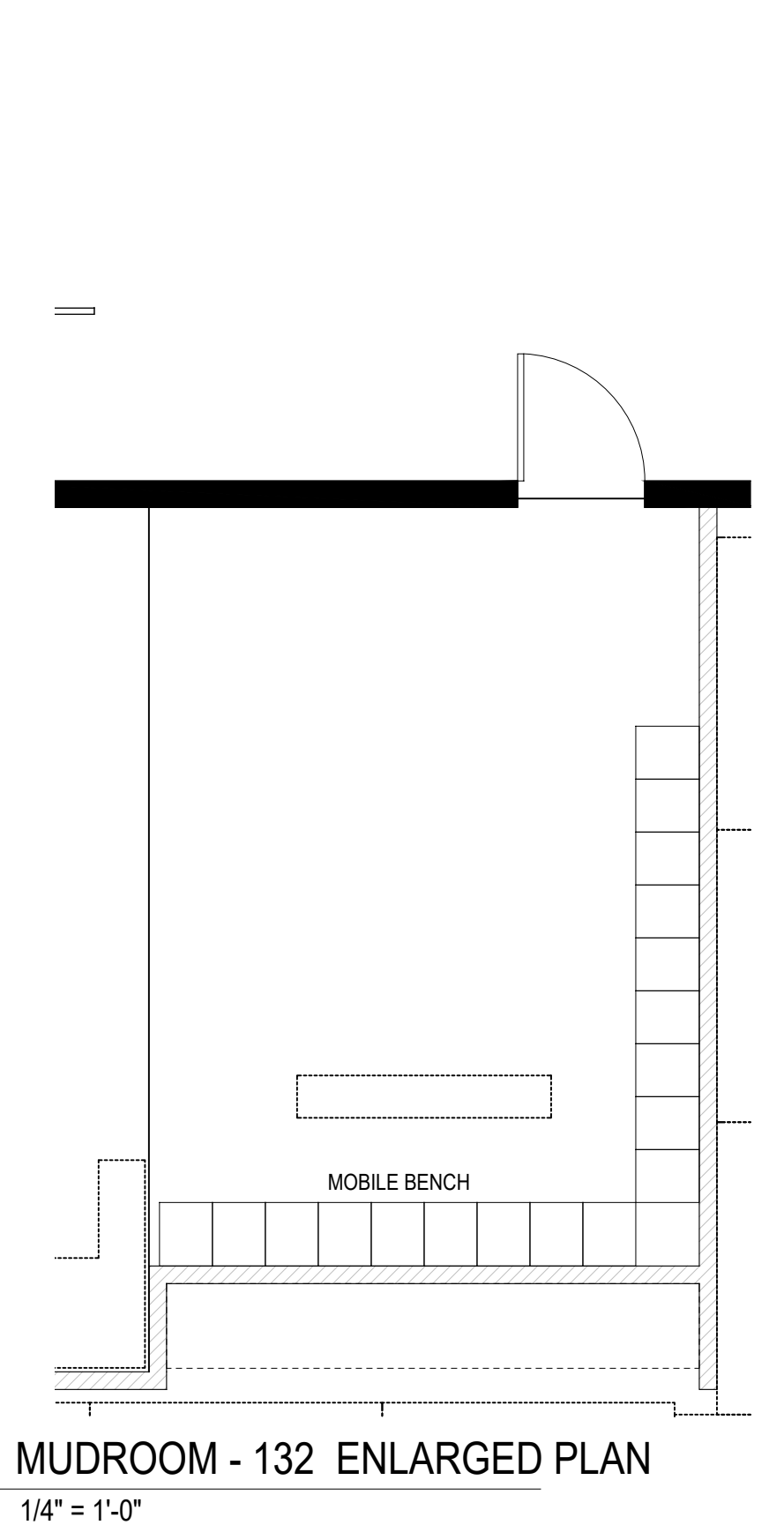
DOOR NO.	TYPE	DOOR		FRAME		FIRE RATING LABEL	HW GROUP	REMARKS	
		WIDTH x HEIGHT	THICKNESS	CONST.	MATERIAL				
101A	A	3'-0" x 7'-0"	1 3/4"	WOOD	EXIST	H.M.	-	1	PAINT FRAME, PT-4
102A	EX	3'-0" x 7'-0"	1 3/4"	H.M.	EXIST	H.M.	-	2	PAINT: FRAME PT-4 / DOOR PT-5; LENE
103A	A	3'-0" x 7'-0"	1 3/4"	H.M.	EXIST	H.M.	-	1	PAINT: FRAME PT-4 / DOOR PT-5
103B	A	3'-0" x 7'-0"	1 3/4"	WOOD	EXIST	H.M.	-	2	PAINT FRAME, PT-4, LENE
104A	B	3'-0" x 7'-0"	1 3/4"	WOOD	EXIST	H.M.	-	1	PAINT FRAME, PT-4
105A	B	3'-0" x 7'-0"	1 3/4"	WOOD	3'-3" X 7'-2"	TIMELY	-	1	
106A	B	3'-0" x 7'-0"	1 3/4"	WOOD	EXIST	H.M.	-	3	PAINT FRAME, PT-4
106B	EX	3'-0" x 7'-0"	1 3/4"	(E) H.M.	EXIST	H.M.	-	7	PAINT FRAME, PT-4, LENE
108A	A	3'-0" x 7'-0"	1 3/4"	WOOD	EXIST	H.M.	-	4	PAINT FRAME, PT-4
109A	A	3'-0" x 7'-0"	1 3/4"	WOOD	EXIST	H.M.	-	4	PAINT FRAME, PT-4
111A	B	3'-0" x 7'-0"	1 3/4"	WOOD	3'-3" X 7'-2"	TIMELY	-	1	
112A	B	3'-0" x 7'-0"	1 3/4"	WOOD	3'-3" X 7'-2"	TIMELY	-	1	
113A	A	3'-0" x 7'-0"	1 3/4"	WOOD	3'-3" X 7'-2"	TIMELY	-	5	HIGH AND LOW VENTILATION GRILLE
114A	B	3'-0" x 7'-0"	1 3/4"	WOOD	3'-3" X 7'-2"	TIMELY	-	1	
116A	A	3'-0" x 7'-0"	1 3/4"	H.M.	3'-3" X 7'-2"	H.M.	-	6	PAINT: FRAME PT-4 / DOOR PT-5; LENE
117A	B	3'-0" x 7'-0"	1 3/4"	WOOD	EXIST	H.M.	-	1	PAINT FRAME, PT-4
121A	A	3'-0" x 7'-0"	1 3/4"	H.M.	3'-3" X 7'-2"	H.M.	-	1	PAINT: FRAME PT-4 / DOOR PT-5
122A	B	3'-0" x 7'-0"	1 3/4"	WOOD	EXIST	H.M.	-	1	PAINT FRAME, PT-4
123A	A	3'-0" x 7'-0"	1 3/4"	H.M.	3'-3" X 7'-2"	H.M.	-	1	PAINT: FRAME PT-4 / DOOR PT-5
124A	B	3'-0" x 7'-0"	1 3/4"	WOOD	3'-3" X 7'-2"	TIMELY	-	1	
125A	A	3'-0" x 7'-0"	1 3/4"	H.M.	EXIST	H.M.	-	1	PAINT: FRAME PT-4 / DOOR PT-5
ALT 1	A	3'-0" x 7'-0"	1 3/4"	H.M.	3'-4" X 7'-2"	H.M.	-	1	PAINT: FRAME PT-4 / DOOR PT-5
125B	B	3'-0" x 7'-0"	1 3/4"	WOOD	EXIST	H.M.	-	6	PAINT FRAME, PT-4, LENE
126A	B	3'-0" x 7'-0"	1 3/4"	WOOD	EXIST	H.M.	-	1	PAINT FRAME, PT-4
127A	B	3'-0" x 7'-0"	1 3/4"	WOOD	EXIST	H.M.	-	1	PAINT FRAME, PT-4
128A	B	3'-0" x 7'-0"	1 3/4"	WOOD	EXIST	H.M.	-	1	PAINT FRAME, PT-4
130A	B	3'-0" x 7'-0"	1 3/4"	WOOD	EXIST	H.M.	-	1	PAINT FRAME, PT-4
131A	B	3'-0" x 7'-0"	1 3/4"	WOOD	3'-3" X 7'-2"	TIMELY	-	9	
131B	B	3'-0" x 7'-0"	1 3/4"	WOOD	3'-3" X 7'-2"	TIMELY	-	1	
132A	EX	3'-0" x 7'-0"	1 3/4"	STL	EXIST	H.M.	-	7	EXTERIOR DOOR, PAINT INTERIOR FRAME PT-4, LENE
133A	EX	3'-0" x 7'-0"	1 3/4"	H.M.	EXIST	H.M.	-	8	PAINT: FRAME PT-4 / DOOR PT-5; LENE
133B	(2) B	6'-0" x 7'-0"	1 3/4"	H.M.	EXIST	H.M.	-	11	PAINT: FRAME PT-4 / DOOR PT-5; LENE
134A	B	3'-0" x 7'-0"	1 3/4"	WOOD	EXIST	H.M.	-	1	PAINT FRAME, PT-4
135A	EX	3'-0" x 7'-0"	1 3/4"	H.M.	EXIST	H.M.	-	12	PAINT FRAME, PT-4, LENE
136A	B	3'-0" x 7'-0"	1 3/4"	WOOD	EXIST	H.M.	-	1	PAINT FRAME, PT-4
137A	A	3'-0" x 7'-0"	1 3/4"	H.M.	3'-3" X 7'-2"	H.M.	-	1	PAINT: FRAME PT-4 / DOOR PT-5; LENE
137B	A	3'-0" x 7'-0"	1 3/4"	WOOD	EXIST	H.M.	-	2	PAINT FRAME, PT-4, LENE
138A	EX	3'-0" x 7'-0"	1 3/4"	H.M.	EXIST	H.M.	-	2	PAINT: FRAME PT-4 / DOOR PT-5; LENE

**DOOR & HARDWARE GENERAL NOTES**

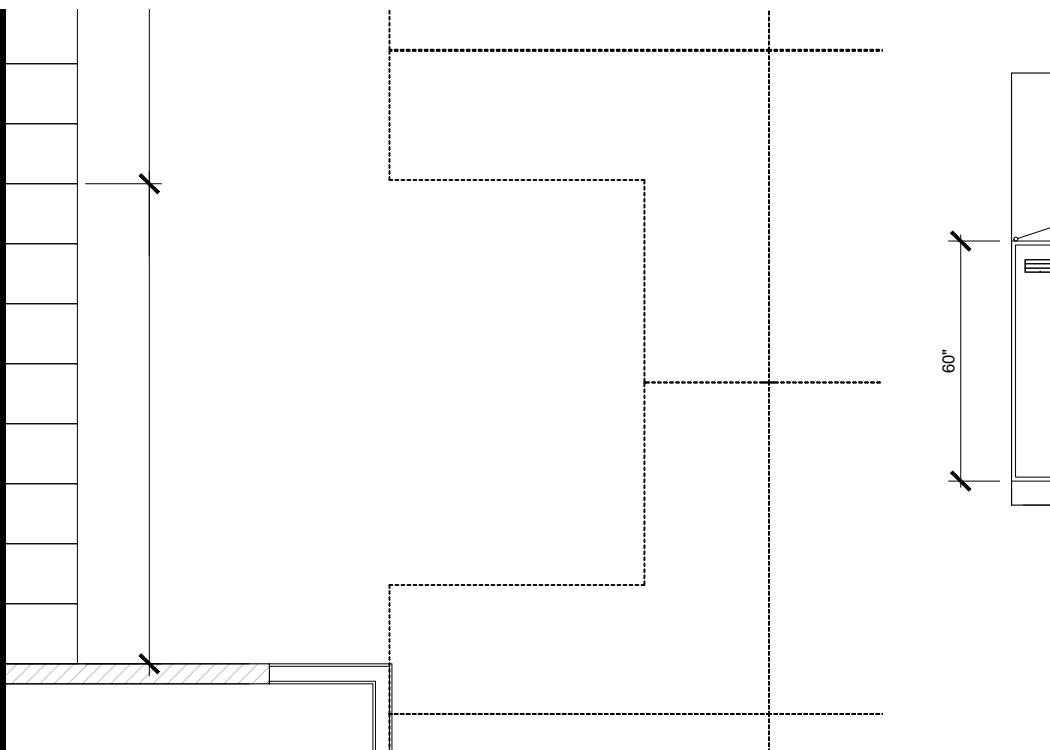
- ALL DOOR HARDWARE SHALL BE FULLY ACCESSIBLE PER THE PROVISIONS OF ANSI A117.1 SECTION 404, AS SUMMARIZED ON A1.1. EXISTING HARDWARE IS ASSUMED TO BE ACCESSIBLE; LEVER STYLE HANDLE OR EXIT DEVICE, CLEAR WIDTH, CLOSING SPEED, DOOR OPENING FORCE, ETC. S.C. TO VERIFY CURRENT DOOR HARDWARE OPERATION AND REPLACE ANY / ALL COMPONENTS AS REQUIRED FOR CODE COMPLIANCE.
- ALL DOORS TO BE READILY OPERABLE IN THE DIRECTION OF EGRESS TRAVEL WITHOUT THE USE OF A KEY OR SPECIAL EFFORT.
- SG INDICATES SAFETY GLAZING, TYP. TEMPERED DR LAMINATED
- DOOR HARDWARE - BEST BK - SATIN CHROME DOOR HARDWARE
- CONTRACTOR TO FIELD VERIFY JAMB DEPTH
- LENE SECURITY ACCESS SYSTEMS ARE GPOI - CONTRACTOR TO COORDINATE

**HARDWARE GROUPS**

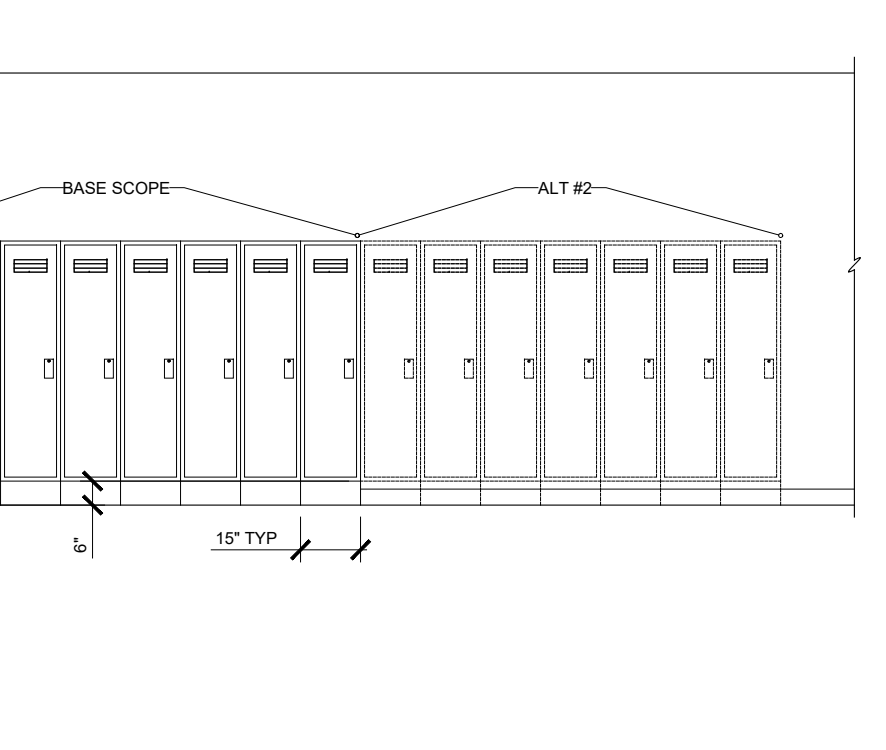
- 3 HINGES, PASSAGE SET, WALL STOP, 3 DOOR SILENCERS
- 2 HINGES, ELECTRIC HINGE, ELECTRO MECH LOCK, LFC CORE, CLOSER, KICK PLATE, WALL STOP, 3 DOOR SILENCERS, 3 WIRE HARNESS, POWER SUPPLY
- 3 HINGES, PASSAGE SET, DOOR CLOSER, KICK PLATE, WALL STOP, 3 DOOR SILENCERS
- 3 HINGES, PULL PLATE, PUSH PLATE, CLOSER, MOP PLATE, KICK PLATE, WALL STOP, GASKETING
- 3 HINGES, LOCKSET, LFC CORE, WALL STOP, 3 DOOR SILENCERS
- 2 HINGES, ELECTRIC HINGE, ELECTRO MECH LOCK, LFC CORE, DOOR CLOSER, KICK PLATE, WALL STOP, 3 DOOR SILENCERS, 3 WIRE HARNESS, POWER SUPPLY
- 2 HINGES, ELECTRIC HINGE, ELECTRO MECH LOCK, LFC CORE, LOCK GUARD, CLOSER/STOP, KICK PLATE, WEATHERSTRIP, DOOR SWEEP, SADDLE THRESHOLD, 3 WIRE HARNESS, POWER SUPPLY
- 2 HINGES, ELECTRIC HINGE, EXIT DEVICE, RIM CYLINDER, DOOR CLOSER, KICK PLATE, WALL STOP, 3 DOOR SILENCERS, 3 WIRE HARNESS, POWER SUPPLY
- 3 HINGES, PASSAGE SET, DOOR CLOSER, KICK PLATE, DOOR STOP
- 3 HINGES, PASSAGE SET, DOOR CLOSER, KICK PLATE, WALL STOP
- 4 HINGES, 2 ELECTRIC HINGES, REMOVABLE MULLION, 2 EXIT DEVICES, 3 RIM CYLINDERS, 2 DOOR CLOSERS, 2 KICK PLATES, 2 WALL STOPS, 2 DOOR SILENCERS, 6 WIRE HARNESSES, POWER SUPPLY
- 2 HINGES, ELECTRIC HINGE, EXIT DEVICE, RIM CYLINDER, CLOSER/STOP, KICK PLATE, GASKETING, DOOR SWEEP, SADDLE THRESHOLD, 3 WIRE HARNESS, POWER SUPPLY



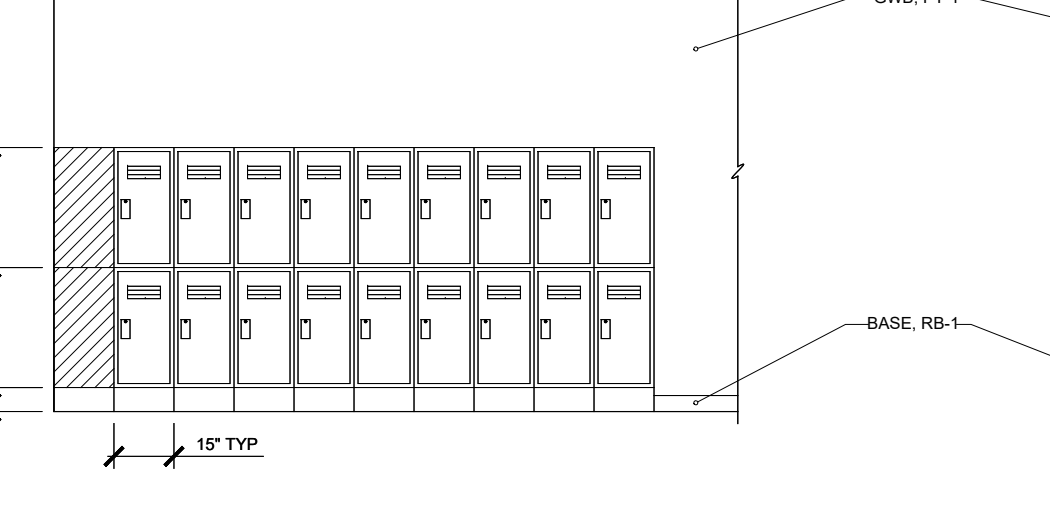
**B4 MUDROOM - 132 ENLARGED PLAN**  
1/4" = 1'-0"



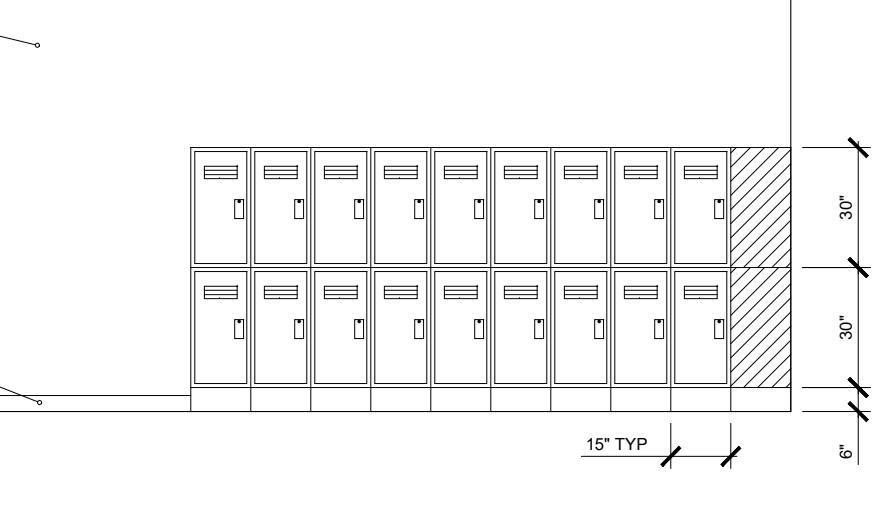
**C5 OPEN OFFICE - 110 ENLARGED PLAN**  
1/4" = 1'-0"



**W OPEN OFFICE - 110 / WEST**  
1/4" = 1'-0"



**S MUDROOM - 132 / SOUTH**  
1/4" = 1'-0"



**E MUDROOM - 132 / EAST**  
1/4" = 1'-0"