



**AIRPORT AND FERRY DIVISION MEMORANDUM**

**February 10, 2021**

*Subject: December 2020 Ferry Performance Measures*

This memorandum and the attached charts provide the Pierce County Ferry Performance Measures for December 2020. All ridership numbers are estimated based on ticket sales and represent both directions of travel.

**Fare Revenue**

MONTH	FARE REVENUE	BUDGETED FARE REVENUE
December	\$212,208	\$225,000

*Monthly revenues reported in the Performance Measures December vary based on the posting date used by Pierce County Finance Department.*

**December 2020 Ridership**

RIDERSHIP CATEGORY	RIDERSHIP COUNT	PERCENT DIFFERENCE FROM 2019	DIFFERENCE IN RIDERS FROM 2019
YTD Total Ridership	424,779	(10.98%)	-52,377
Monthly Total Ridership	33,067	(7.10%)	-2,529
Walk-on Adults	4,130	(3.95%)	-170
Walk-on Youth	2,194	(36.55%)	-1,264
Walk-on Senior / Disabled	2,626	(21.75%)	-730
Walk-on Commuters	2,810	(24.62%)	-918
Vehicles up to 22' with Driver	5,400	18.68%	850
Vehicles up to 22' with Commuter	12,216	(4.26%)	-544
Vehicles up to 22' with Senior/Disabled	2,020	8.37%	156
Commuter Motorcycles	16	(20.00%)	-4

**Vehicles Left Behind\* in December**

VEHICLES LEFT BEHIND 2020	VEHICLES LEFT BEHIND 2019	% CHG FROM 2019
904	431	110%

*\*Vehicles left behind are based on estimates and may include vehicles that are early for the next run.*

## Pierce County Ferry - 2020 Ridership Anderson & Ketron Islands

Combined Islands	Jan-20 OUT	Feb-20 OUT	Mar-20 OUT	Apr-20 OUT	May-20 OUT	Jun-20 OUT	Jul-20 OUT	Aug-20 OUT	Sep-20 OUT	Oct-20 OUT	Nov-20 OUT	Dec-20 OUT	2020 TOTALS	
<b>Passengers</b>														
Adults	3,268	3,680	2,978	3,100	5,504	5,730	8,710	8,448	6,102	4,464	3,760	4,130	59,874	<b>Total Passengers</b>
Youth (Ages 6-18)	3,104	3,250	2,178	1,558	2,946	2,898	7,002	5,668	3,208	2,462	2,152	2,194	38,620	
Children (Under Age 6)	300	390	276	334	782	916	1,522	1,478	874	564	448	572	8,456	
Senior/Disabled Citizens	2,974	2,976	2,146	1,728	2,410	2,850	3,504	3,432	3,086	2,866	2,396	2,626	32,994	
Commuter Passengers	3,582	3,670	2,846	1,854	2,694	3,298	3,630	3,468	2,964	2,986	2,680	2,810	36,482	
<b>Monthly Passenger Total</b>	<b>13,228</b>	<b>13,966</b>	<b>10,424</b>	<b>8,574</b>	<b>14,336</b>	<b>15,692</b>	<b>24,368</b>	<b>22,494</b>	<b>16,234</b>	<b>13,342</b>	<b>11,436</b>	<b>12,332</b>	<b>176,426</b>	<b>176,426</b>
<b>Vehicles</b>														
Up to 22' and Driver	3,844	4,214	4,256	4,564	6,202	6,378	9,004	8,716	6,696	5,610	4,920	5,400	69,804	<b>Total Vehicles</b>
Up to 22' and Sr/Disabled	1,800	1,884	1,668	1,708	2,042	2,034	2,344	2,500	2,134	2,182	1,716	2,020	24,032	
Up to 22' and Commuter	12,472	12,028	10,252	8,108	10,680	12,422	12,826	12,908	12,436	12,578	11,150	12,216	140,076	
Over 22' to under 30'	186	214	194	176	310	292	350	340	432	464	388	288	3,634	
30' to under 40"	210	266	290	244	310	382	498	432	396	400	330	324	4,082	
40' to under 50'	40	50	48	50	96	102	106	132	90	88	52	74	928	
50' to under 60'	4	34	20	32	40	40	44	44	62	44	18	34	416	
60' to under 70'	16	16	26	16	30	30	42	30	32	14	38	62	352	
70' to under 80'	16	12	4	4	12	12	18	12	10	68	46	36	250	
80' to under 90'	0	0	0	2	0	0	0	0	0	0	0	0	2	
90' and greater	0	0	0	0	0	0	0	0	0	0	0	0	0	
Motorcycle w/Driver	6	18	10	52	54	64	124	104	58	60	16	8	574	
Motorcycle w/Commuter	18	28	32	60	74	146	230	204	186	142	14	16	1,150	
3-Wheel Vehicles	4	16	8	12	14	20	50	40	28	12	4	12	220	
<b>Monthly Vehicle Total</b>	<b>18,616</b>	<b>18,780</b>	<b>16,808</b>	<b>15,028</b>	<b>19,864</b>	<b>21,922</b>	<b>25,636</b>	<b>25,462</b>	<b>22,560</b>	<b>21,662</b>	<b>18,692</b>	<b>20,490</b>	<b>245,520</b>	<b>245,520</b>
<b>Non-Exempt Total</b>														
<b>Monthly Non-Exempt Total</b>	<b>31,844</b>	<b>32,746</b>	<b>27,232</b>	<b>23,602</b>	<b>34,200</b>	<b>37,614</b>	<b>50,004</b>	<b>47,956</b>	<b>38,794</b>	<b>35,004</b>	<b>30,128</b>	<b>32,822</b>	<b>421,946</b>	<b>421,946</b>
<b>Exempt</b>														
Exempt Vehicles	247	169	111	79	160	235	363	391	277	297	259	245	2,833	<b>Total Exempt</b>
Exempt Passengers	0	0	0	0	0	0	0	0	0	0	0	0	0	
<b>Monthly Exempt Total</b>	<b>247</b>	<b>169</b>	<b>111</b>	<b>79</b>	<b>160</b>	<b>235</b>	<b>363</b>	<b>391</b>	<b>277</b>	<b>297</b>	<b>259</b>	<b>245</b>	<b>2,833</b>	
<b>Other - NOT INCLUDED</b>														
Cars Left Behind	335	241	114	80	1,253	1,671	3,417	2,390	1,577	1,275	612	904	13,869	
<b>Totals</b>	<b>32,091</b>	<b>32,915</b>	<b>27,343</b>	<b>23,681</b>	<b>34,360</b>	<b>37,849</b>	<b>50,367</b>	<b>48,347</b>	<b>39,071</b>	<b>35,301</b>	<b>30,387</b>	<b>33,067</b>	<b>424,779</b>	
Change from 2019	-0.48%	27.08%	-24.78%	-31.41%	-22.42%	-12.15%	-9.45%	-14.48%	1.54%	-8.22%	-15.75%	-7.10%	-10.98%	

Pierce County Planning & Public Works  
Airport and Ferry Division  
9850 64th St W  
University Place, WA 98467

<b>Total Passengers</b>	<b>176,426</b>
<b>Total Vehicles</b>	<b>245,520</b>
<b>Total Exempt</b>	<b>2,833</b>
<b>Total Ridership</b>	<b>424,779</b>

## Pierce County Ferry - 2019 Ridership Anderson & Ketron Islands

Combined Islands	Jan-19 OUT	Feb-19 OUT	Mar-19 OUT	Apr-19 OUT	May-19 OUT	Jun-19 OUT	Jul-19 OUT	Aug-19 OUT	Sep-19 OUT	Oct-19 OUT	Nov-19 OUT	Dec-19 OUT	2019 TOTALS	
<b>Passengers</b>														
Adults	3,404	2,622	4,346	4,766	5,972	5,958	9,642	9,618	5,124	4,472	4,532	4,300	64,756	<b>Total Passengers</b>
Youth (Ages 6-18)	3,592	2,880	4,348	3,970	5,566	4,852	7,246	7,466	4,192	3,780	3,708	3,458	55,058	
Children (Under Age 6)	338	234	516	704	906	952	1,764	1,896	674	406	432	470	9,292	
Senior/Disabled Citizens	3,066	2,380	3,232	3,324	4,044	4,108	4,948	5,124	3,526	3,666	3,312	3,356	44,086	
Commuter Passengers	3,362	2,724	3,496	3,242	3,874	4,044	4,588	4,562	4,012	4,444	3,634	3,728	45,710	
<b>Monthly Passenger Total</b>	<b>13,762</b>	<b>10,840</b>	<b>15,938</b>	<b>16,006</b>	<b>20,362</b>	<b>19,914</b>	<b>28,188</b>	<b>28,666</b>	<b>17,528</b>	<b>16,768</b>	<b>15,618</b>	<b>15,312</b>	<b>218,902</b>	<b>218,902</b>
<b>Vehicles</b>														
Up to 22' and Driver	3,790	3,032	5,046	4,334	5,942	5,530	8,420	8,724	4,724	4,644	4,760	4,550	63,496	<b>Total Vehicles</b>
Up to 22' and Sr/Disabled	1,692	1,258	1,812	1,592	2,036	2,026	2,436	2,682	1,896	2,154	2,112	1,864	23,560	
Up to 22' and Commuter	12,082	9,996	12,350	11,272	14,138	13,976	14,406	14,208	12,948	13,498	12,486	12,760	154,120	
Over 22' to under 30'	218	216	294	246	388	320	338	382	232	304	218	182	3,338	
30' to under 40"	198	148	276	222	340	284	338	380	270	268	192	176	3,092	
40' to under 50'	60	38	60	64	100	82	104	168	68	80	54	44	922	
50' to under 60'	14	10	28	20	42	28	58	74	18	20	34	20	366	
60' to under 70'	22	14	32	22	38	28	34	38	44	26	20	16	334	
70' to under 80'	6	4	8	2	4	2	4	38	16	6	8	16	114	
80' to under 90'	0	0	0	2	0	2	0	0	0	2	0	0	6	
90' and greater	0	0	0	0	0	0	0	0	0	0	0	0	0	
Motorcycle w/Driver	28	8	56	68	86	82	94	76	34	40	16	4	592	
Motorcycle w/Commuter	36	32	114	154	226	196	222	248	144	80	52	20	1,524	
3-Wheel Vehicles	12	4	8	12	8	12	20	10	12	12	16	2	128	
<b>Monthly Vehicle Total</b>	<b>18,158</b>	<b>14,760</b>	<b>20,084</b>	<b>18,010</b>	<b>23,348</b>	<b>22,568</b>	<b>26,474</b>	<b>27,028</b>	<b>20,406</b>	<b>21,134</b>	<b>19,968</b>	<b>19,654</b>	<b>251,592</b>	<b>251,592</b>
<b>Non-Exempt Total</b>														
<b>Monthly Non-Exempt Total</b>	<b>31,920</b>	<b>25,600</b>	<b>36,022</b>	<b>34,016</b>	<b>43,710</b>	<b>42,482</b>	<b>54,662</b>	<b>55,694</b>	<b>37,934</b>	<b>37,902</b>	<b>35,586</b>	<b>34,966</b>	<b>470,494</b>	<b>470,494</b>
<b>Exempt</b>														
Exempt Vehicles	326	300	328	508	580	602	962	840	544	560	482	630	6,662	<b>Total Exempt</b>
Exempt Passengers	0	0	0	0	0	0	0	0	0	0	0	0	0	
<b>Monthly Exempt Total</b>	<b>326</b>	<b>300</b>	<b>328</b>	<b>508</b>	<b>580</b>	<b>602</b>	<b>962</b>	<b>840</b>	<b>544</b>	<b>560</b>	<b>482</b>	<b>630</b>	<b>6,662</b>	
<b>Other - NOT INCLUDED</b>														
Cars Left Behind	95	139	269	416	920	763	2,074	2,423	827	345	449	431	9,151	
<b>Totals</b>	<b>32,246</b>	<b>25,900</b>	<b>36,350</b>	<b>34,524</b>	<b>44,290</b>	<b>43,084</b>	<b>55,624</b>	<b>56,534</b>	<b>38,478</b>	<b>38,462</b>	<b>36,068</b>	<b>35,596</b>	<b>477,156</b>	
Change from 2018	9.44%	-4.58%	8.02%	5.55%	9.79%	0.40%	0.95%	12.74%	0.17%	5.38%	3.65%	3.79%	4.90%	

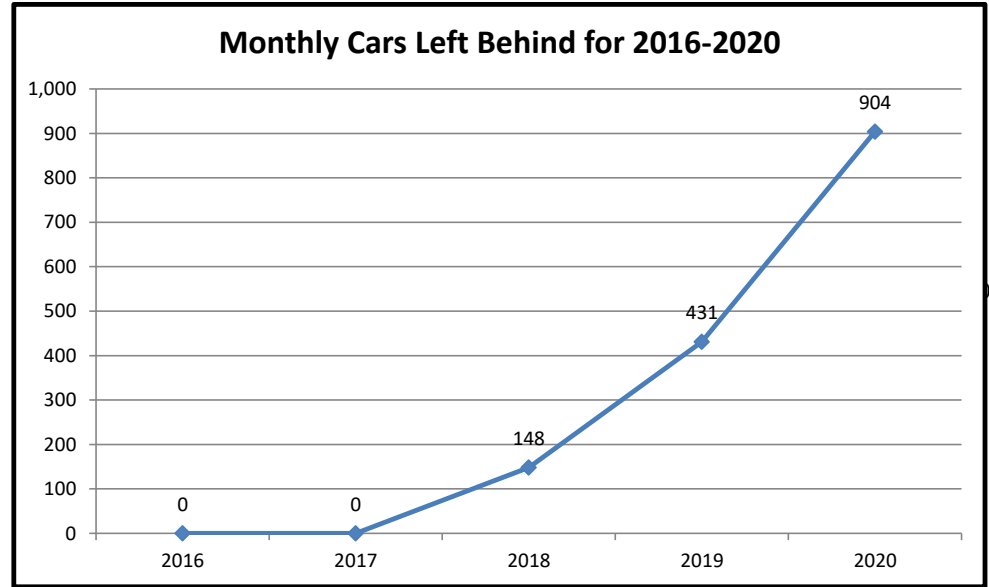
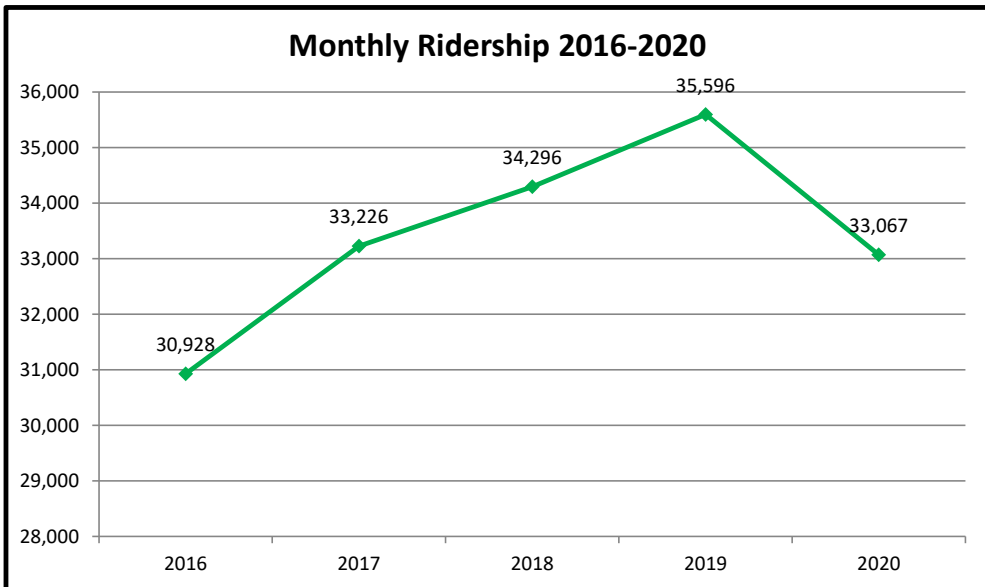
Pierce County Planning & Public Works  
Airport and Ferry Division  
9850 64th St W  
University Place, WA 98467

<b>Total Passengers</b>	<b>218,902</b>
<b>Total Vehicles</b>	<b>251,592</b>
<b>Total Exempt</b>	<b>6,662</b>
<b>Total Ridership</b>	<b>477,156</b>

## Pierce County Ferry - 2016 to 2020 Monthly Ridership For the Month of December

Combined Islands	2016	2017	2018	2019	2020	2016-2020 AVERAGES
<b>Passengers</b>						
Monthly Passenger Total	13,854	14,538	15,430	15,312	12,332	14,293
<b>Vehicles</b>						
Monthly Vehicle Total	17,042	18,310	18,460	19,654	20,490	18,791
<b>Exempt</b>						
Monthly Exempt Total	32	378	406	630	245	338
<b>Other - NOT INCLUDED</b>						
Monthly Cars Left Behind	0	0	148	431	904	297
<b>Totals</b>	<b>30,928</b>	<b>33,226</b>	<b>34,296</b>	<b>35,596</b>	<b>33,067</b>	<b>33,423</b>

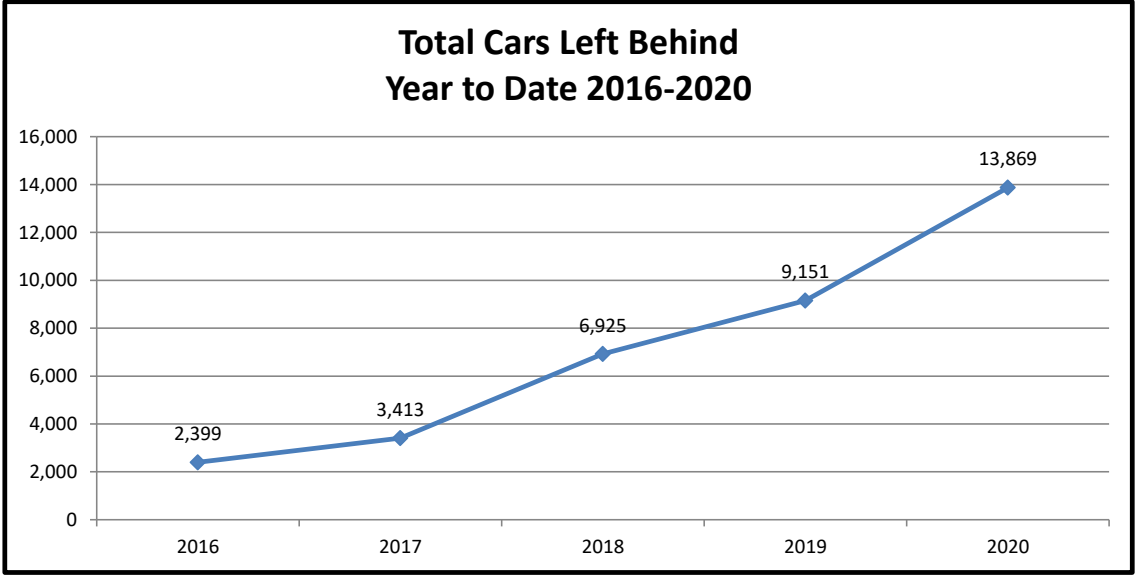
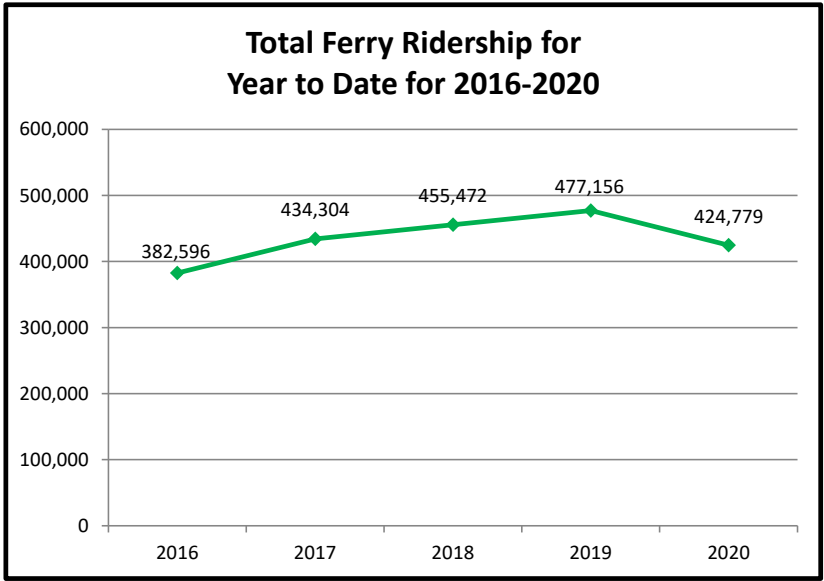
**Anderson & Ketron  
Islands**



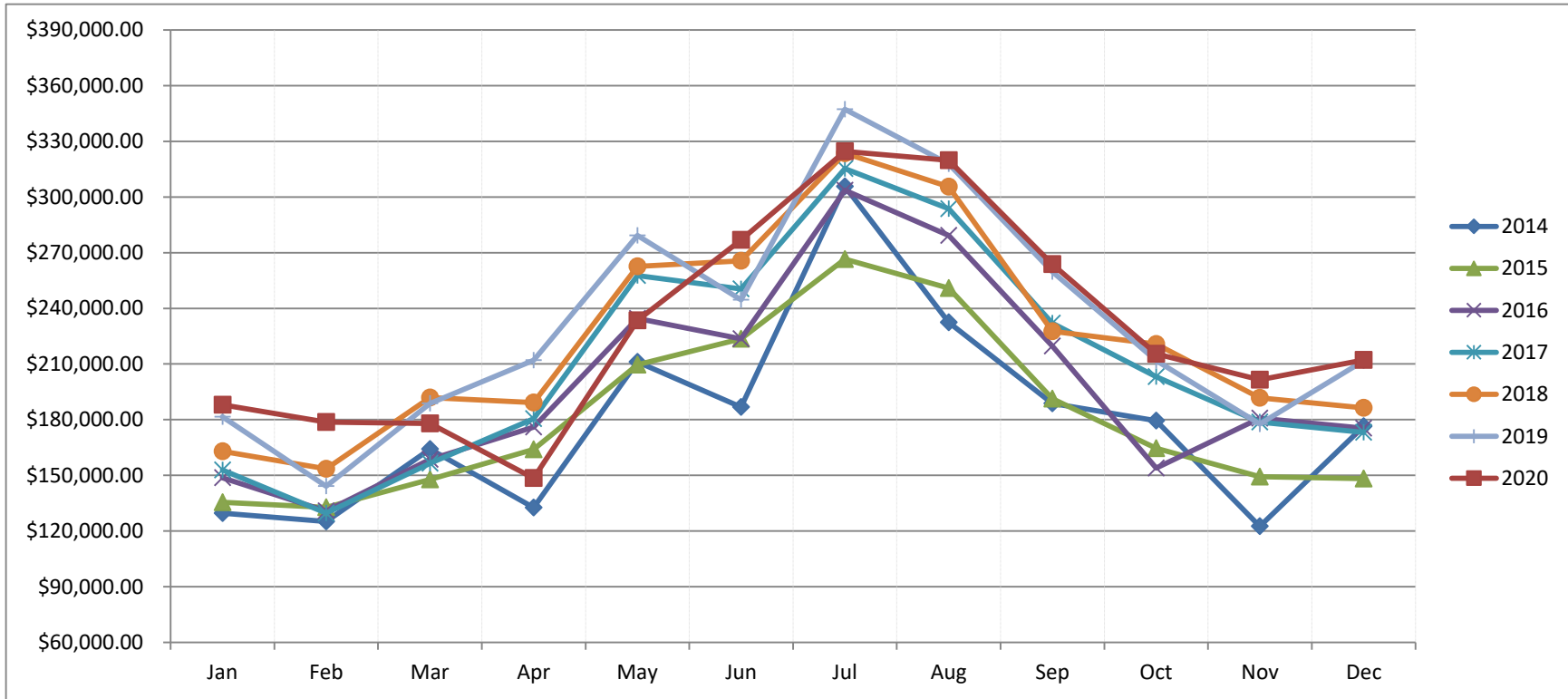
## Pierce County Ferry 2016-2020 Year to Date Totals Through December

Combined Islands	2016	2017	2018	2019	2020	2016-2020 AVERAGES
<b>Passengers</b>						
YTD Passenger Total	178,588	197,800	207,446	218,902	176,426	195,832
<b>Vehicles</b>						
YTD Vehicle Total	203,404	231,344	242,526	251,592	245,520	234,877
<b>Exempt</b>						
YTD Exempt Total	604	5,160	5,500	6,662	2,833	4,152
<b>Other - NOT INCLUDED</b>						
Cars Left Behind	2,399	3,413	6,925	9,151	13,869	7,151
<b>Totals</b>	<b>382,596</b>	<b>434,304</b>	<b>455,472</b>	<b>477,156</b>	<b>424,779</b>	<b>434,861</b>

**Anderson & Ketron  
Island**



## Pierce County Ferry System Ticket Sales by Month 2014-2020



Month	2014	2015	2016	2017	2018	2019	2020
Jan	\$ 129,625.00	\$ 135,455.00	\$ 148,753.95	\$ 152,936.35	\$ 163,007.30	\$ 181,627.00	\$ 188,014.00
Feb	\$ 125,146.00	\$ 132,736.00	\$ 130,783.20	\$ 129,663.00	\$ 153,516.00	\$ 144,150.00	\$ 178,752.00
Mar	\$ 164,208.00	\$ 147,762.00	\$ 158,542.65	\$ 156,493.00	\$ 191,868.19	\$ 188,724.35	\$ 178,002.00
Apr	\$ 132,604.00	\$ 163,957.70	\$ 176,019.27	\$ 180,457.00	\$ 189,160.92	\$ 211,979.00	\$ 148,477.00
May	\$ 211,172.00	\$ 209,581.63	\$ 234,493.20	\$ 257,589.00	\$ 262,604.70	\$ 279,249.00	\$ 233,448.00
Jun	\$ 186,820.00	\$ 223,529.80	\$ 223,570.55	\$ 250,428.00	\$ 265,570.00	\$ 244,633.00	\$ 276,901.00
Jul	\$ 305,702.00	\$ 266,512.69	\$ 303,626.22	\$ 315,273.00	\$ 323,590.00	\$ 347,239.00	\$ 324,557.00
Aug	\$ 232,362.00	\$ 250,957.44	\$ 279,322.38	\$ 293,666.00	\$ 305,517.00	\$ 317,752.00	\$ 319,749.00
Sep	\$ 188,716.00	\$ 191,350.91	\$ 219,709.25	\$ 232,005.00	\$ 227,613.00	\$ 259,714.00	\$ 263,780.00
Oct	\$ 179,409.00	\$ 164,579.42	\$ 153,994.35	\$ 203,140.00	\$ 220,739.00	\$ 211,919.00	\$ 215,482.00
Nov	\$ 122,535.00	\$ 149,226.31	\$ 180,780.35	\$ 178,766.00	\$ 191,804.00	\$ 177,644.00	\$ 201,552.00
Dec	\$ 176,474.00	\$ 148,272.10	\$ 175,444.45	\$ 173,176.00	\$ 186,402.00	\$ 211,720.00	\$ 212,208.00
Totals	\$ 2,154,773.00	\$ 2,183,921.00	\$ 2,385,039.82	\$ 2,523,592.35	\$ 2,681,392.11	\$ 2,776,350.35	\$ 2,740,922.00